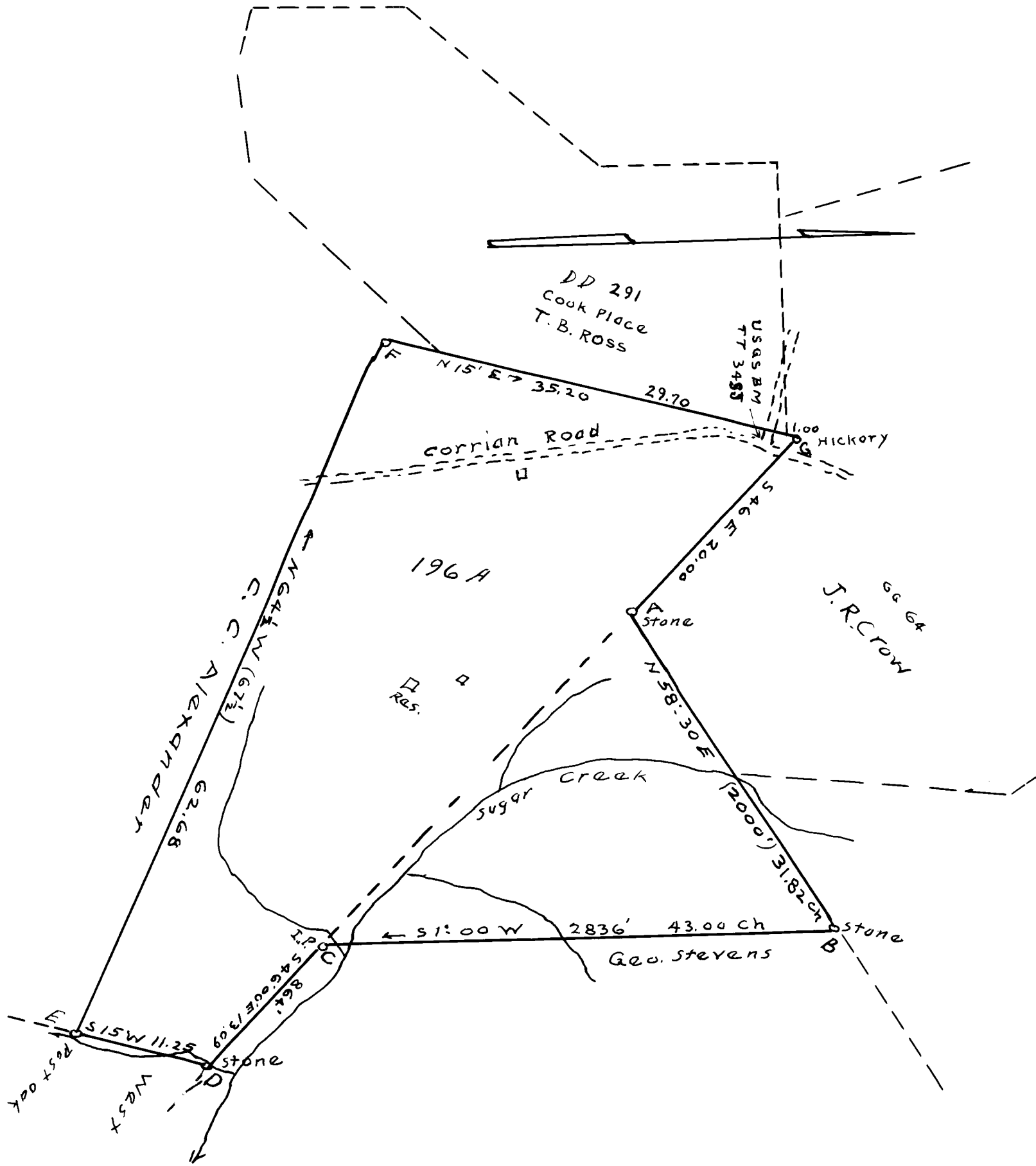


EX PARTE
MINNIE WEST



PROPERTY OF
MINNIE WEST

Near GREEN POND SCHOOL
SPARTANBURG CO S.C.
Line "A-B-C-D" RUN 1932
see Deed S.T. McCraw to C.C. West DEFG
6-V Page 93 see Plat by John L. Young
of A.W. Thomson Land Feb 1878
verified Feb 26-1934
Scale 1" = 10 CH.
W.N. Willis, C.E

Registered, Certified & Examined Sept. 28, 1937 at 9:15 a.m