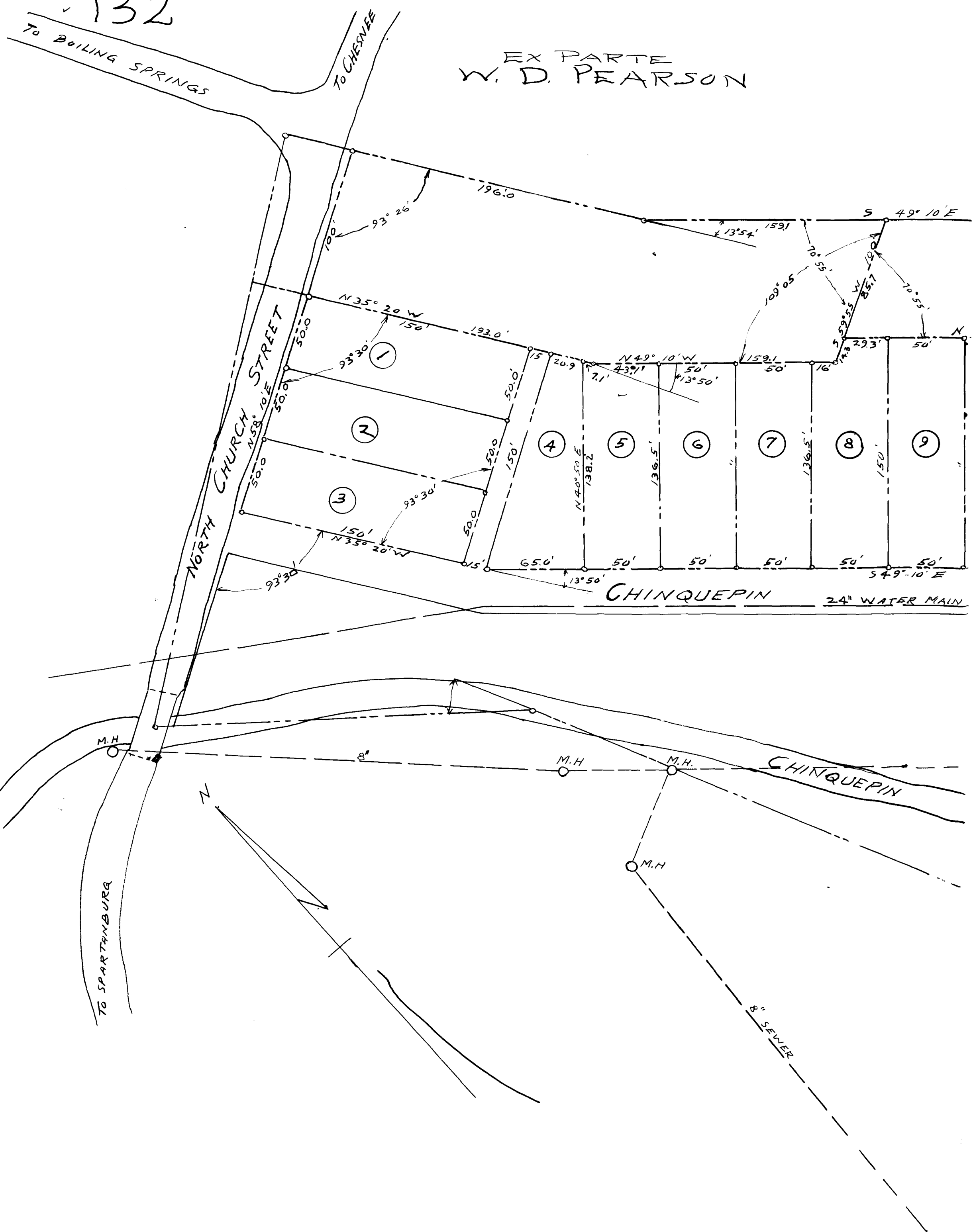
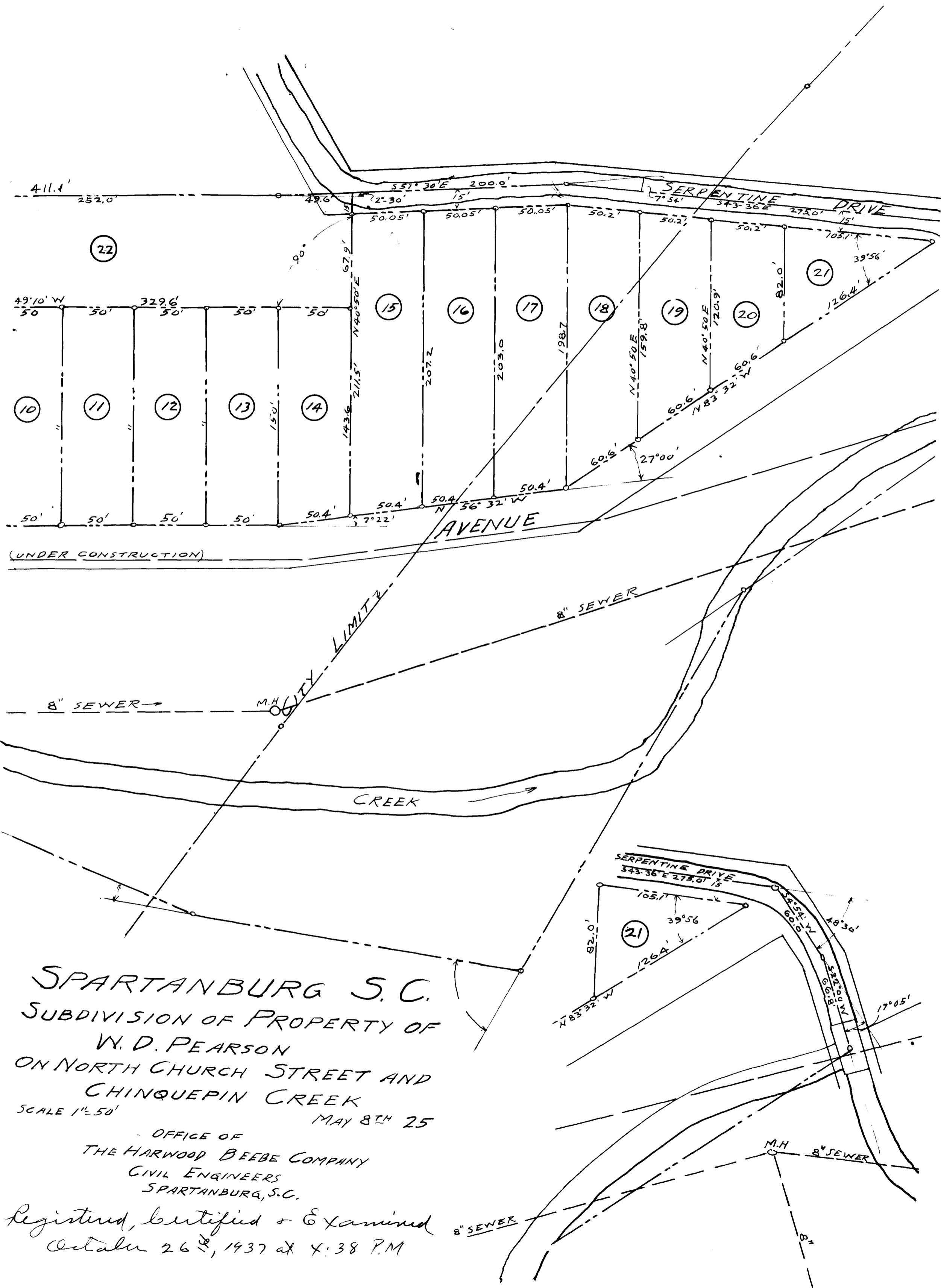


132

EX PARTE  
W. D. PEARSON





SPARTANBURG S.C.  
 SUBDIVISION OF PROPERTY OF  
 W. D. PEARSON  
 ON NORTH CHURCH STREET AND  
 CHINQUEPIN CREEK  
 SCALE 1"=50'  
 MAY 8<sup>TH</sup> 25

OFFICE OF  
 THE HARWOOD BEEBE COMPANY  
 CIVIL ENGINEERS  
 SPARTANBURG, S.C.

Registered, Certified & Examined  
 October 26<sup>th</sup>, 1937 at 4:38 P.M.

