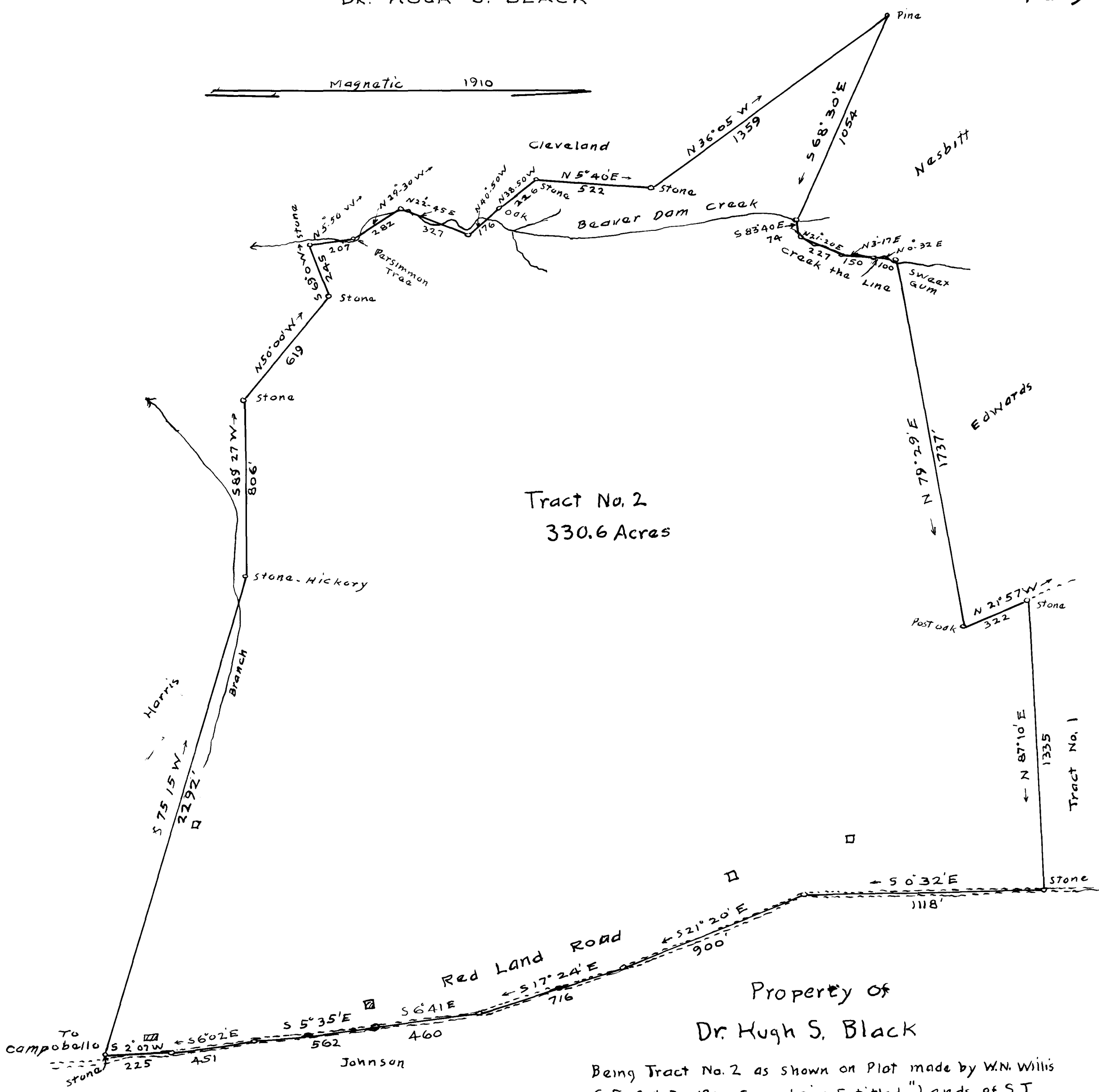


EX PARTE
DR. HUGH S. BLACK

Magnetic 1910



Tract No. 2
330.6 Acres

Property of
Dr. Hugh S. Black

Being Tract No. 2 as shown on Plat made by W.N. Willis
C. E. Oct. 30, 1910. Same being Entitled "Lands of S. T.
McCravy near Campobello, Spartanburg Co. S.C.

Tract No. 2 Retraced from original by Joseph S. Taylor
of W.N. Willis, Engineers
Spartanburg, S.C.

Scale 1" = 400'

Dec. 10 1937

NOTE: No Re-Survey Made

Original of this Plat filed in office of W. N. Willis, Eng'rs.

(Magnetic of 1910 Used)

Registered, Certified & Examined December 11th 1937 at 9:14 A. M.