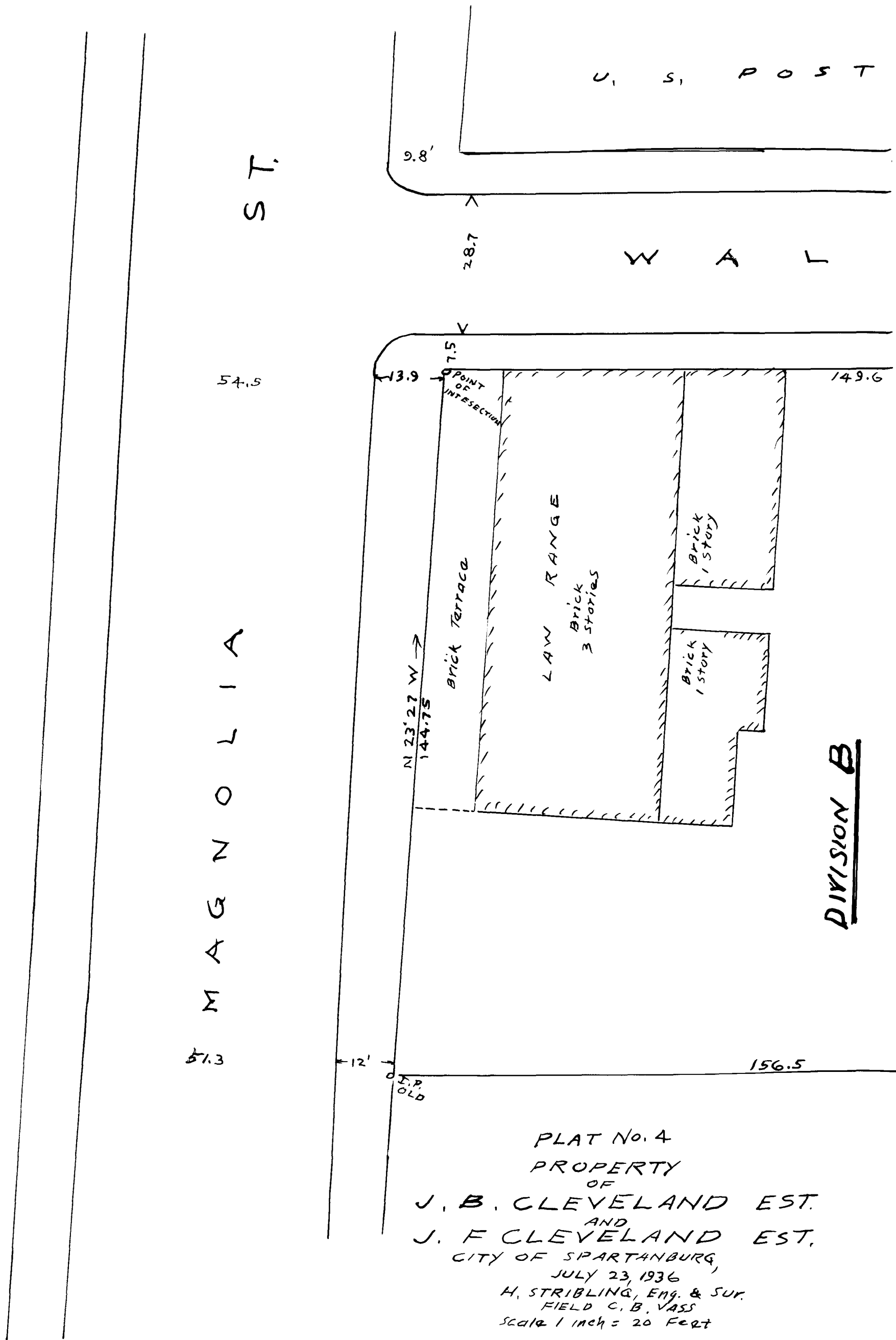


148

EX PARTE  
J. B. CLEVELAND EST.  
J. F. CLEVELAND EST.



MAGNOLIA ST.

54.5

51.3

N 23° 27' W  
144.75

Brick Terrace

LAW RANGE  
Brick  
3 stories

Brick  
1 story

Brick  
1 story

DIVISION B

9.8'

28.7

U. S. POST

W A L L

17.5

13.9

POINT OF INTERSECTION

149.6

12'

156.5

12' OLD

PLAT No. 4  
PROPERTY  
OF  
J. B. CLEVELAND EST.  
AND  
J. F. CLEVELAND EST.  
CITY OF SPARTANBURG,  
JULY 23, 1936  
H. STRIBLING, Eng. & Sur.  
FIELD C. B. VASS  
Scale 1 inch = 20 Feet

O F F I C E

I U T S T,

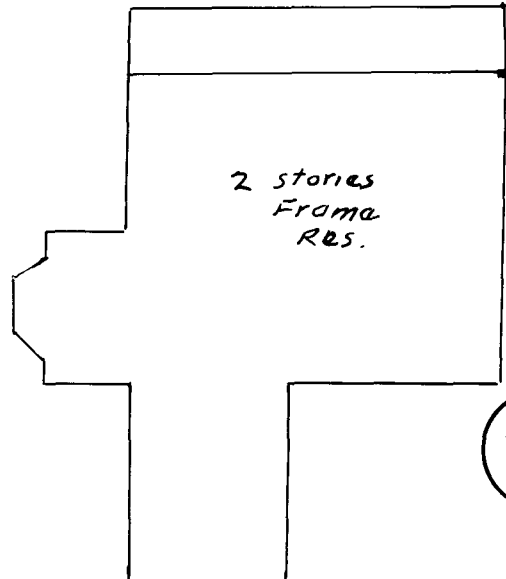
249.6  
N 61° 33' E →

100

29.3

7.5

POINT  
C. OF FENCE



2 stories  
Frame  
RES.

1

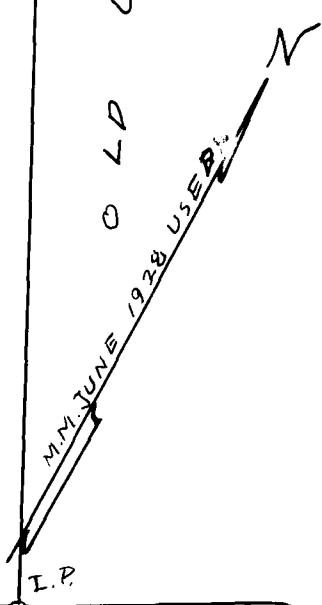
2

N 26° 32' W →  
144.9

← E 26° 32' E →  
145

POINT  
C. OF FENCE  
OLD U. S. POST OFFICE  
LOT

DIVISION A



I.P.

100

← S 61° 36' W  
256.5

A L L E Y

10

20'

19'

Registered, Certified & Examined January 6<sup>th</sup> 1938 at 9:44 a.m.