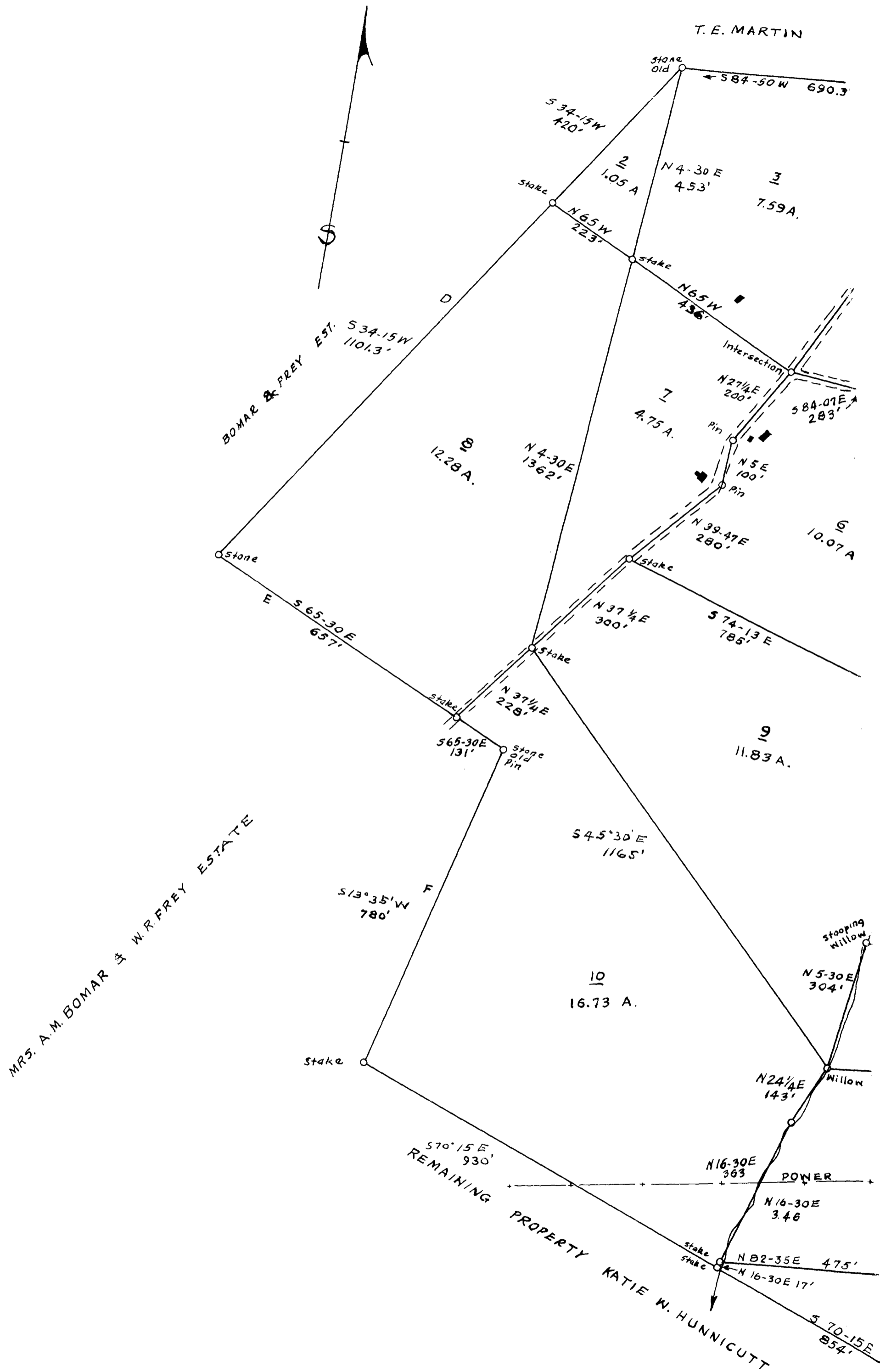
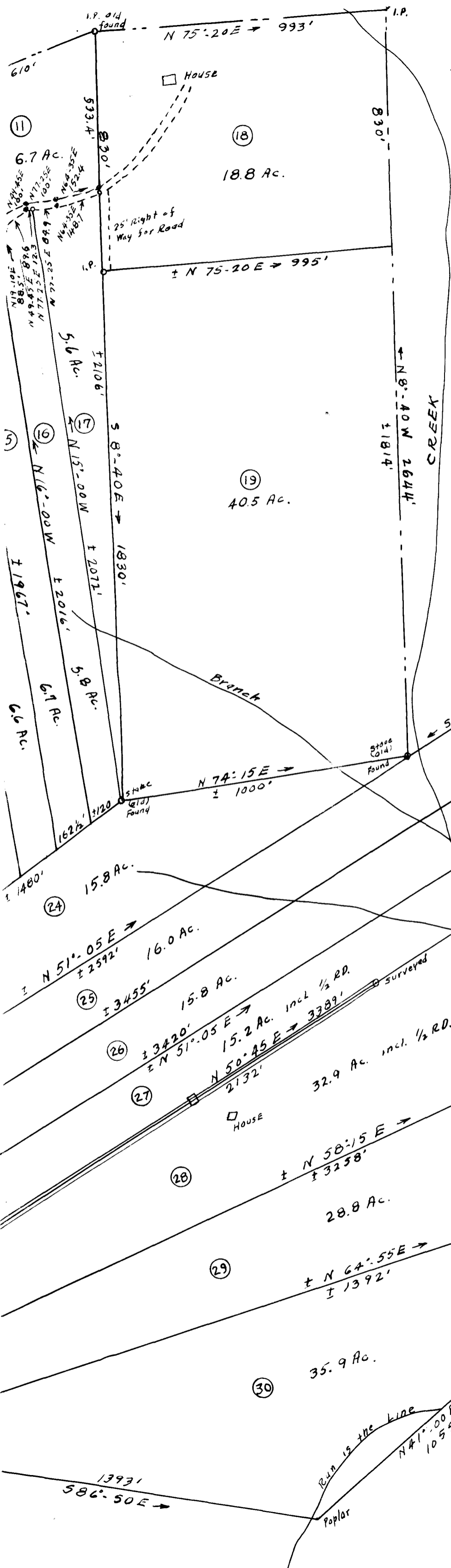


152





RESUBDIVISION
CEDAR SPRINGS FARMS

PROPERTY OF
 ROBT. M. HITCH JR. AND VIRGINIA HITCH OXNARD

SELLING AGENTS
UNITED AUCTION CO.
 WILMINGTON, N. C.

SCALE 1" = 300'

APR. 1938

FIELD: C.B. VASS

J.H. GOOCH, SURV.
 SPARTANBURG, S.C.

ALL BEARINGS REDUCED TO MEAN SEA LEVEL APR. 1938