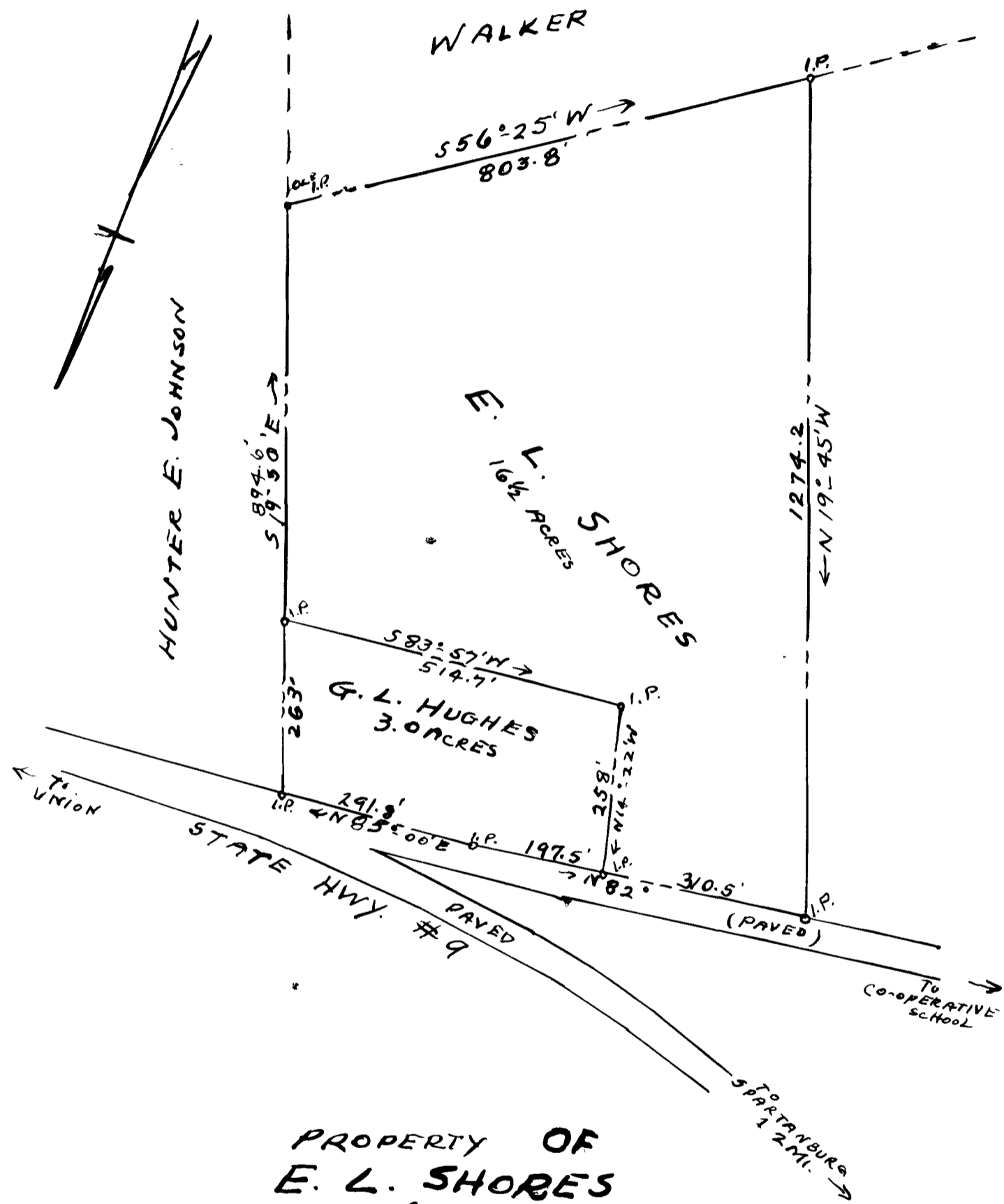


156

EX PARTE
E. L. SHORES & G. L. HUGHES



PROPERTY OF
E. L. SHORES
AND
G. L. HUGHES

NEAR THE CITY OF SPARTANBURG, S.C.
SCALE: 1" = 200 OCT 23, 1941

BEING TRACTS OF S. S. WOOD PROP. SEC PLAT BY H. STREIBLING, C.E. NOV. 24, 1931. LOTS 26-33 INCL. OF H. S. LIPSCOMB PLACE, PL. BK. 7. PGS. 53-54, INCLUDING 30' STRIPS ON EAST AND SOUTH.

J. H. GOOCH, SUR
SPARTANBURG, S.C.
FIELD: C. B. VASS

Registered, Certified, & Examined Nov. 15, 1941 at 10:14 A.M.