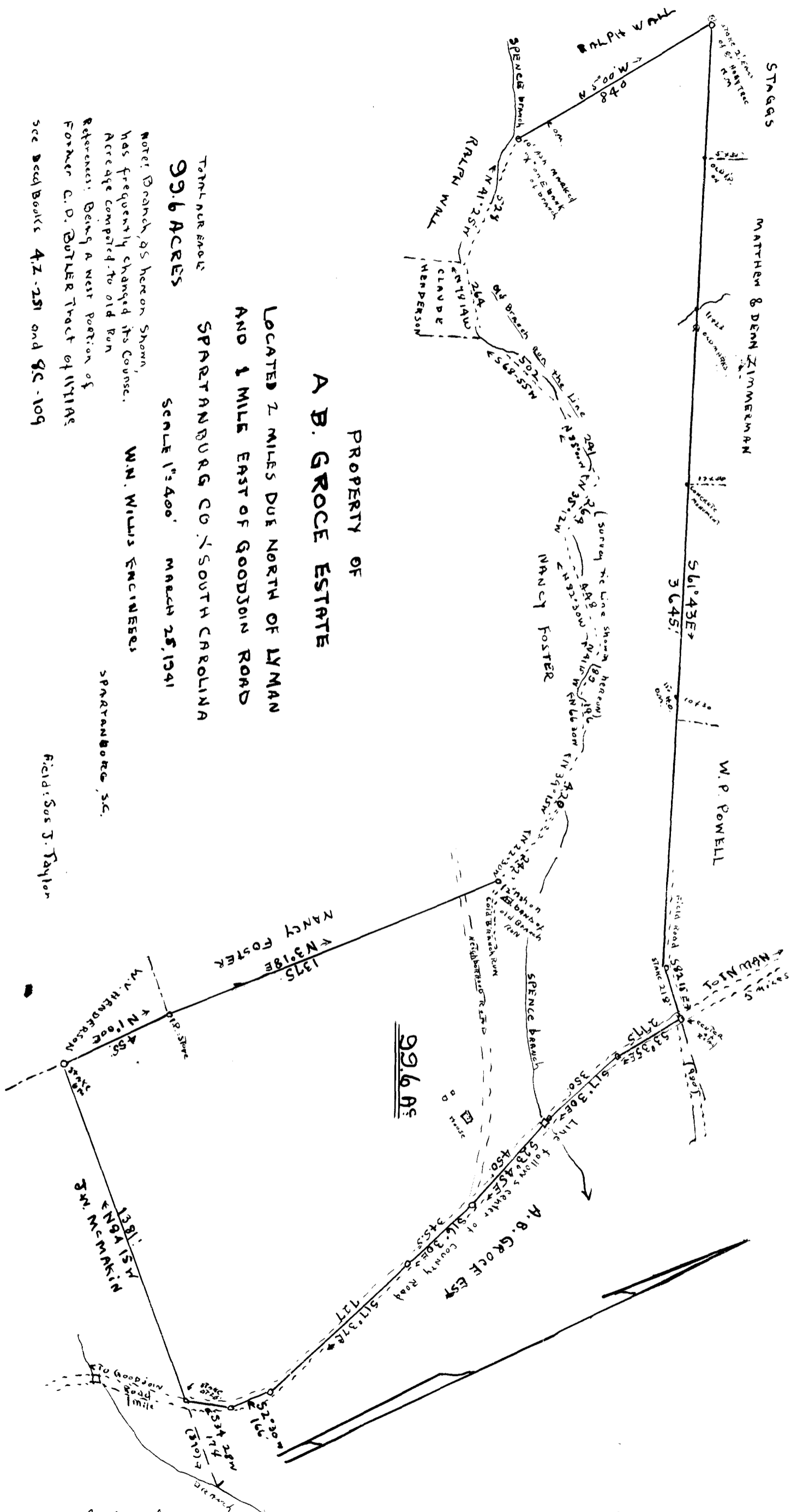


158

EX PARTE
A. B. GROCE EST.



PROPERTY OF
A. B. GROCE ESTATE

LOCATED 2 MILES DUE NORTH OF LYMAN
AND 1 MILE EAST OF GOODJOIN ROAD
SPARTANBURG CO. SOUTH CAROLINA

TOTAL SURFACE
99.6 ACRES

SCALE 1"=400' MARCH 25, 1941

W.M. WILLYS ENGINEERS
SPARTANBURG, S.C.

Field: Sus J. Taylor

NOTE: Boundary as hereon shown, has frequently changed its course. Acreage computed to old Run Reference: Being a West Portion of former C. D. BUTLER Tract of 1171 AC. see Deed Books 42-251 and 9C-109

Registered, Certified and Examined Nov. 19, 1941 at 1:20 P.M.