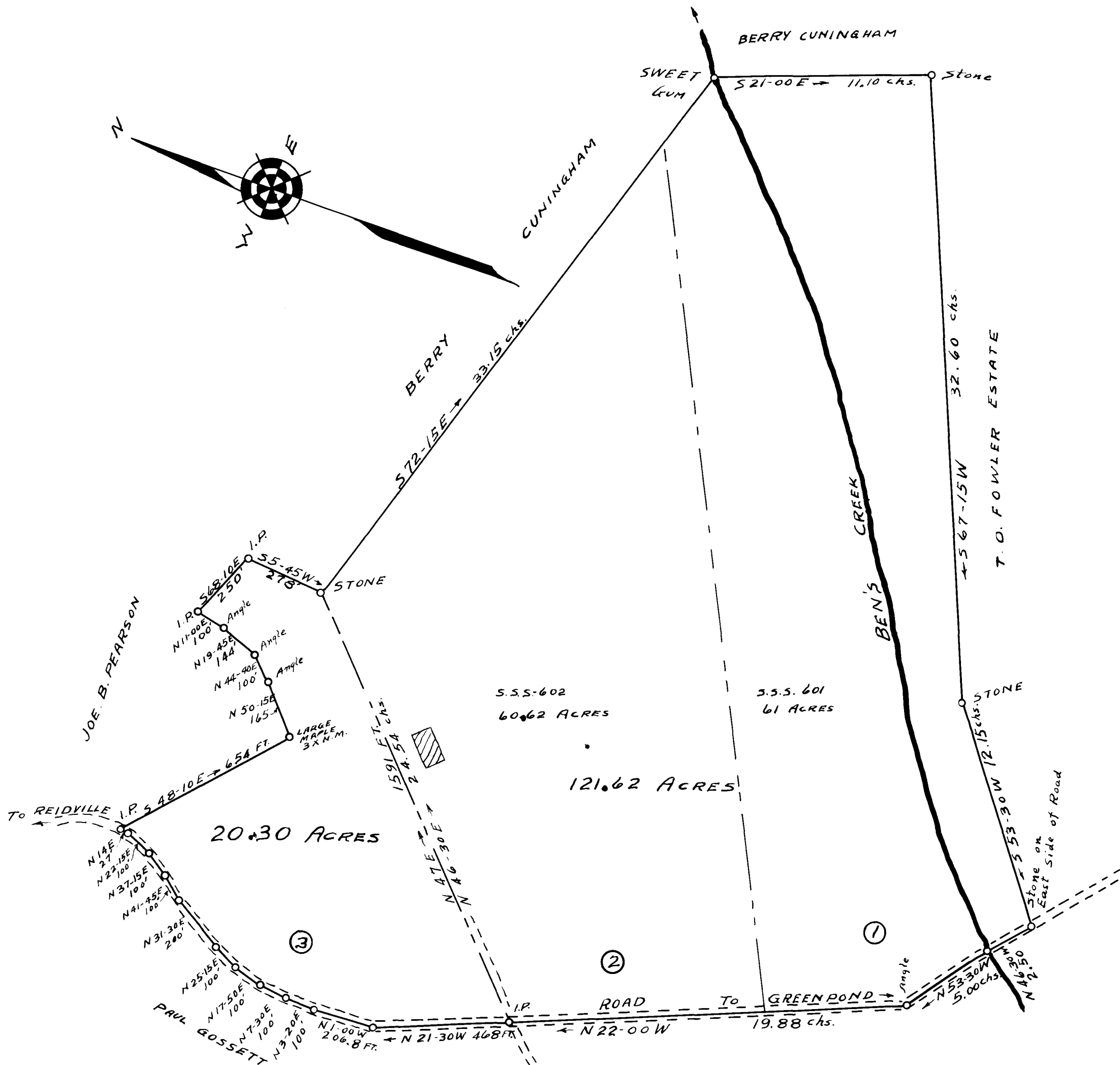


EX PARTE  
W.C. HUGHES



PROPERTY OF  
W.C. HUGHES  
NEAR REIDVILLE

REIDVILLE TOWNSHIP SPARTANBURG COUNTY  
SOUTH CAROLINA

SCALE: 1" = 5,00 CHAINS OR 330 FT. MARCH 30, 1939  
TRACTS 1 AND 2 PLATED FROM CALLS IN DEEDS  
555-601 AND 555-602 TRACT NO. 3 SURVEYED BY  
ME DECEMBER 14, 1938  
H.S. BROCKMAN, SURVEYOR  
GREER, S.C.

TOTAL: 141.92 ACRES

Registered, certified & Examined Aug, 7<sup>th</sup> 1939 at 4:39 P.M.