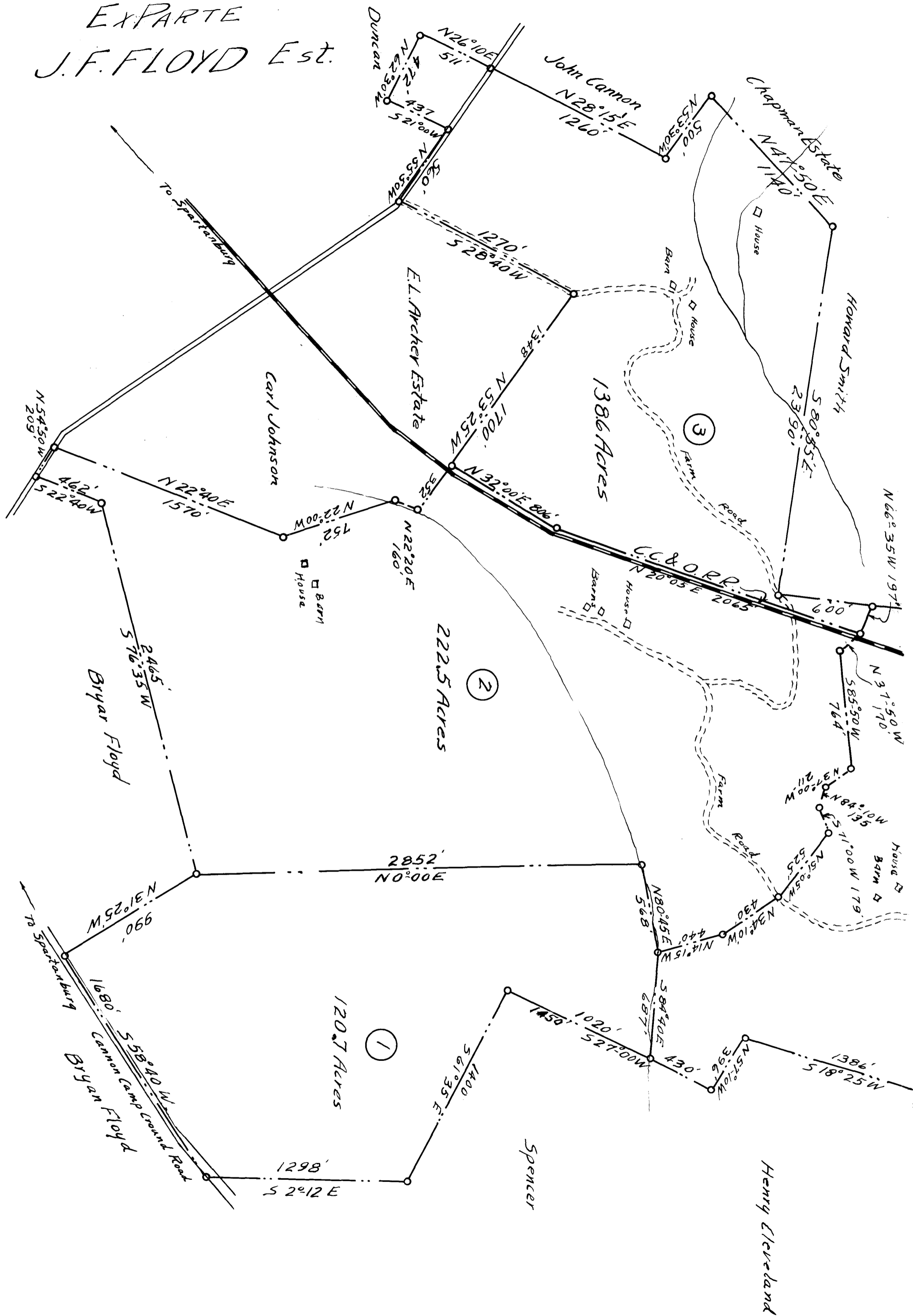
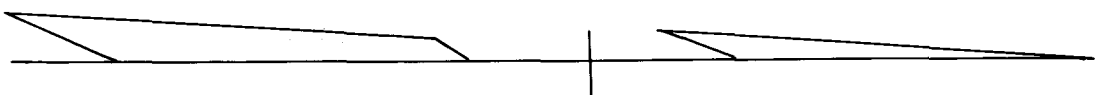


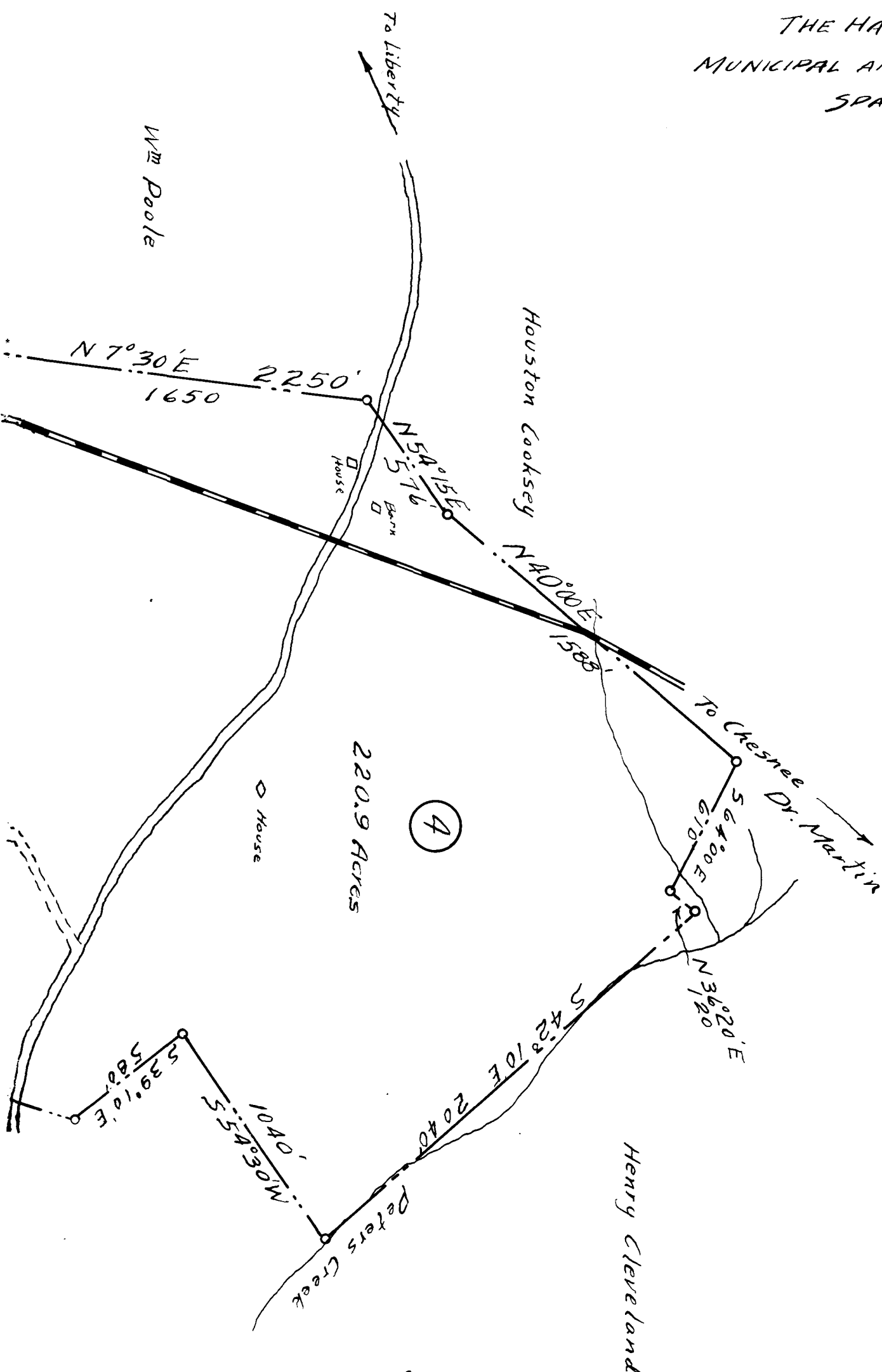
155

# EX PARTE J.F. FLOYD Est.





PARTITION OF  
**J. F. FLOYD ESTATE**  
 4 MILES NORTH EAST OF SPARTANBURG  
 SPARTANBURG TOWNSHIP, SPARTANBURG, COUNTY, S.C.  
 SCALE: 1" = 500' MAY 8, 1939  
 THE HARWOOD BEEBE CO.  
 MUNICIPAL AND CIVIL ENGINEERS  
 SPARTANBURG, S.C.



Registered, Certified & Examined Aug. 20<sup>th</sup> 1939 at 3:49 P.M.