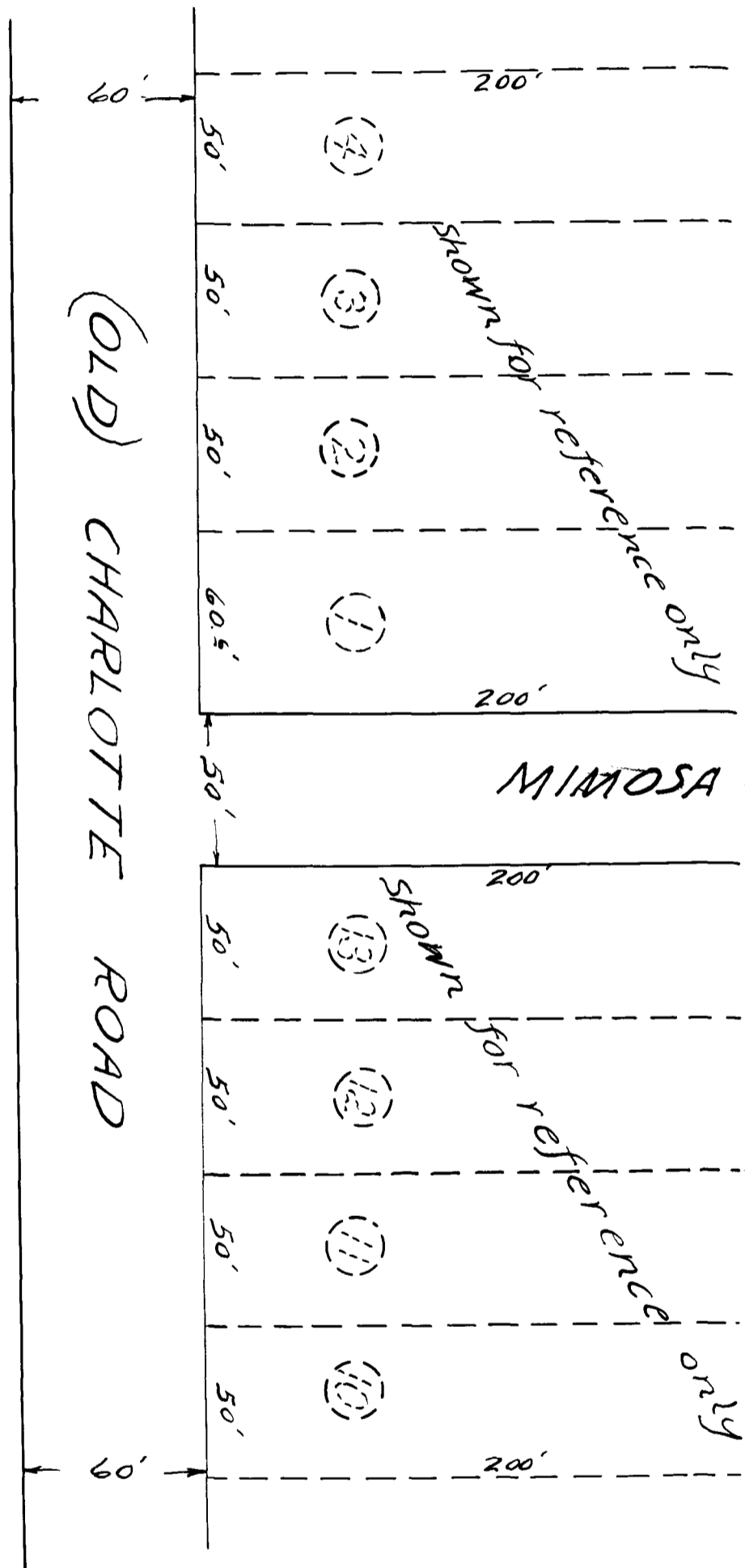


164

EX PARTE
JAMES D. BOYD



PROPERTY OF

JAMES D. BOYD

LOCATED IN "HILLCREST"

NEAR THE CITY OF SPARTANBURG

SPARTANBURG COUNTY, SOUTH CAROLINA

SCALE: 1"=50' AUGUST 9, 1939.

Reference: the above plat represents
a re-subdivision of lots 13 thru 20 in
block "C" and lots 14 thru 19 in block "D"
as shown on revised plat of "Hilcrest"
by W.N. Willis, Eng'r, April 1926, recorded
in plat book 9, page 96.

W.N. Willis, Engineers

Spartanburg, S.C.

FIELD - JOSEPH S. TAYLOR

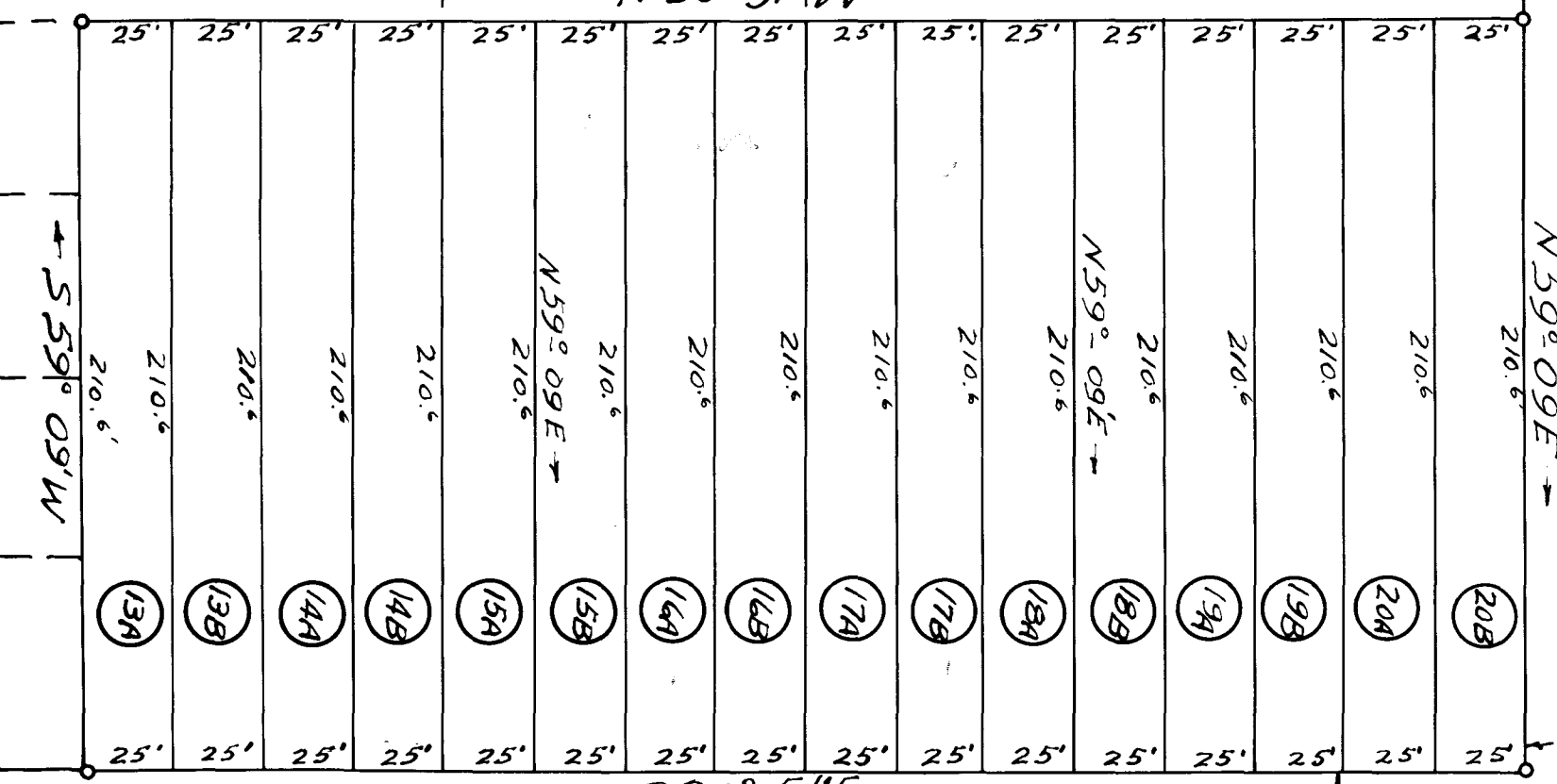
PLAT - D.H.B.

Iron pins set at all corners

E. B. Hallman

MARYLAND AVENUE

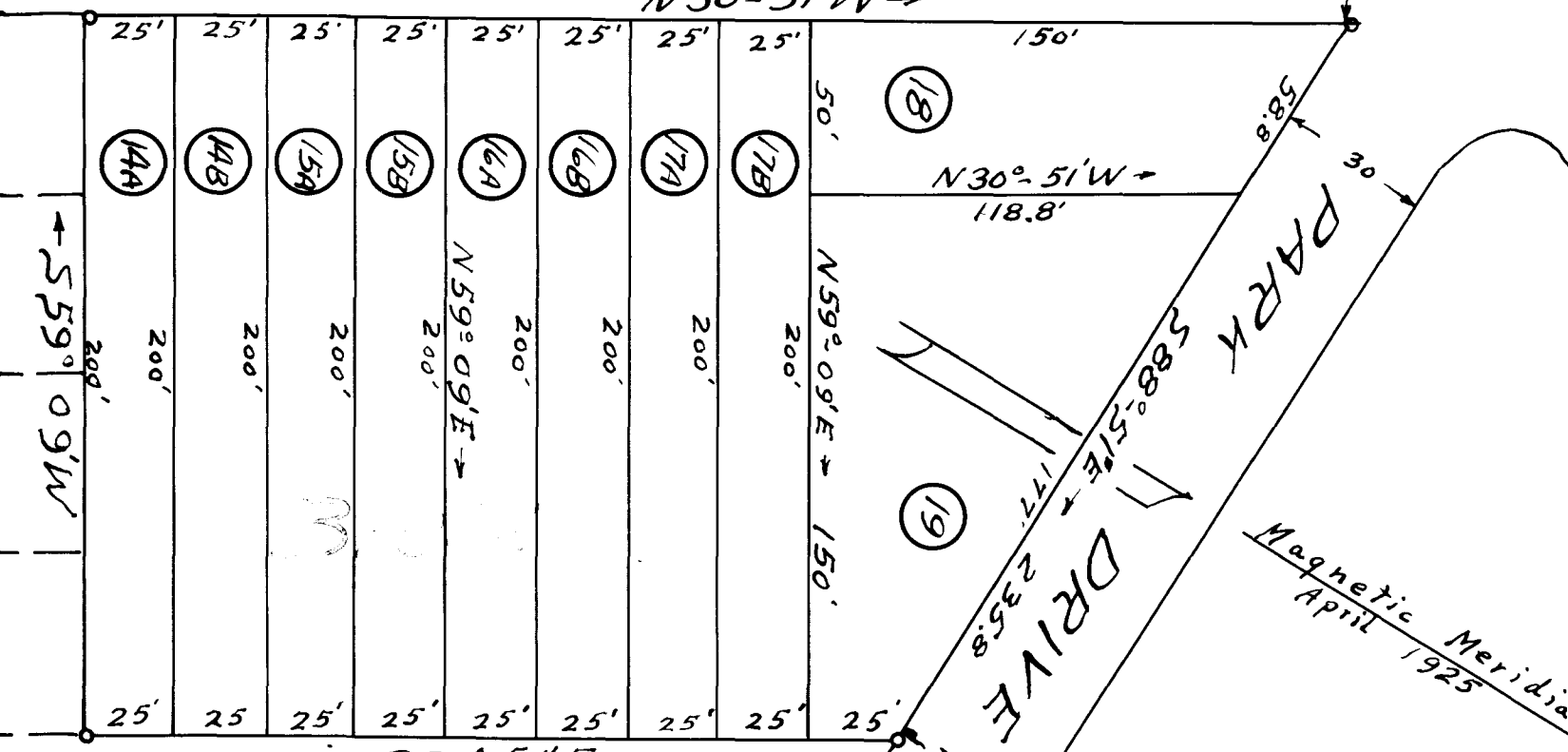
N 30° 51' W →



← S 30° 51' E

STREET

N 30° 51' W →



← S 30° 51' E

Magnetic Meridian
April 1925

Registered, Certified + Examined August 31st 1939 at 4:11 P.M.