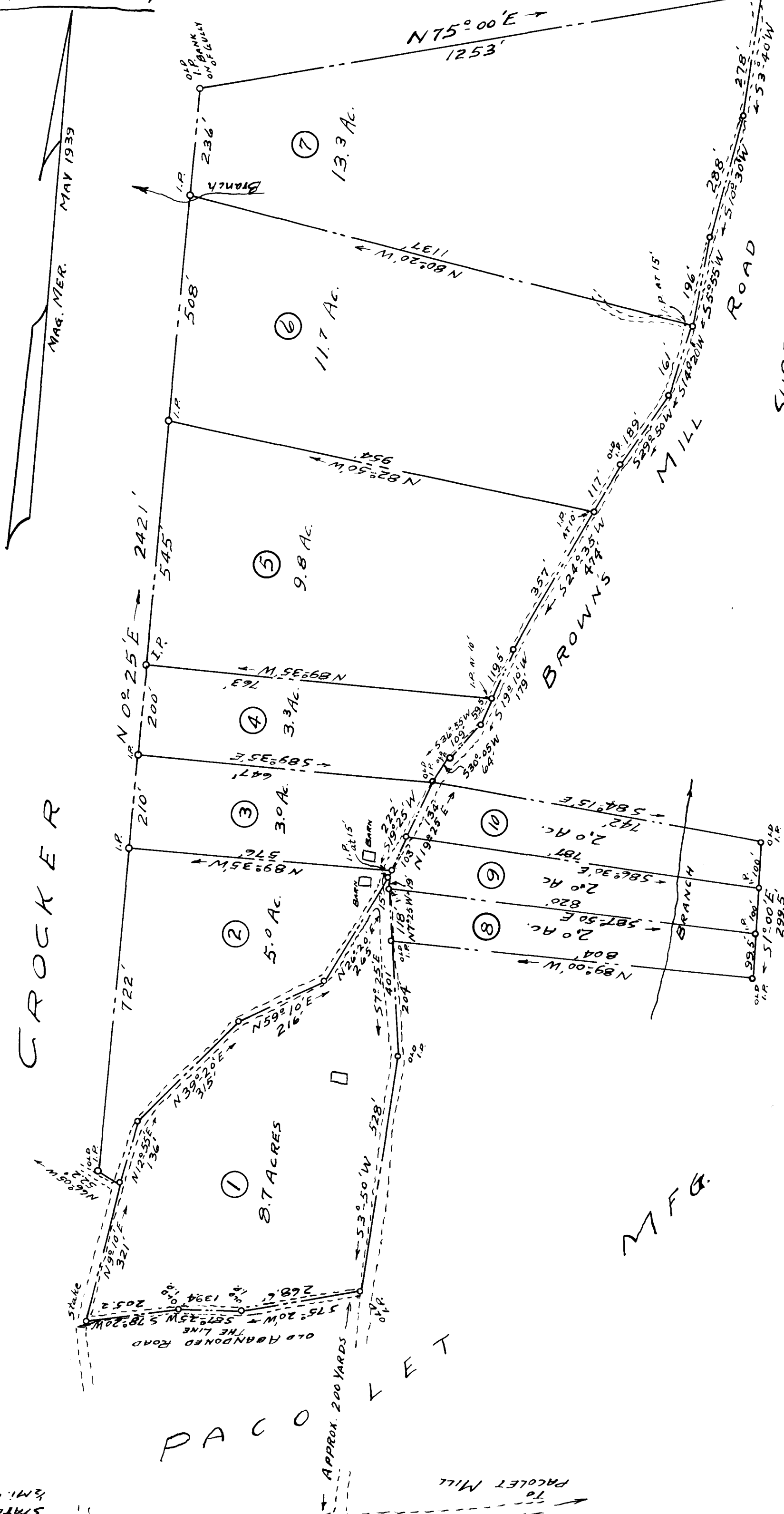


EX PARTE
JOE W. BROWN

RANDALL



SUBDIVISION OF
 JOE W. BROWN PROP.
 NEAR PACOLET MILLS
 SPARTANBURG COUNTY, S.C.
 SCALE: 1"=200'
 MAY, 11, 1939
 J. H. GOOCH, SUR.
 SPARTANBURG, S.C.

2 MI. TO
 STATE HWY #9
 1/2 MI. N. OF PACOLET
 STATION

Registered, certified + Examined Sept. 11th 1939 at 9:59 a.m.