

1

FOREST HILLS

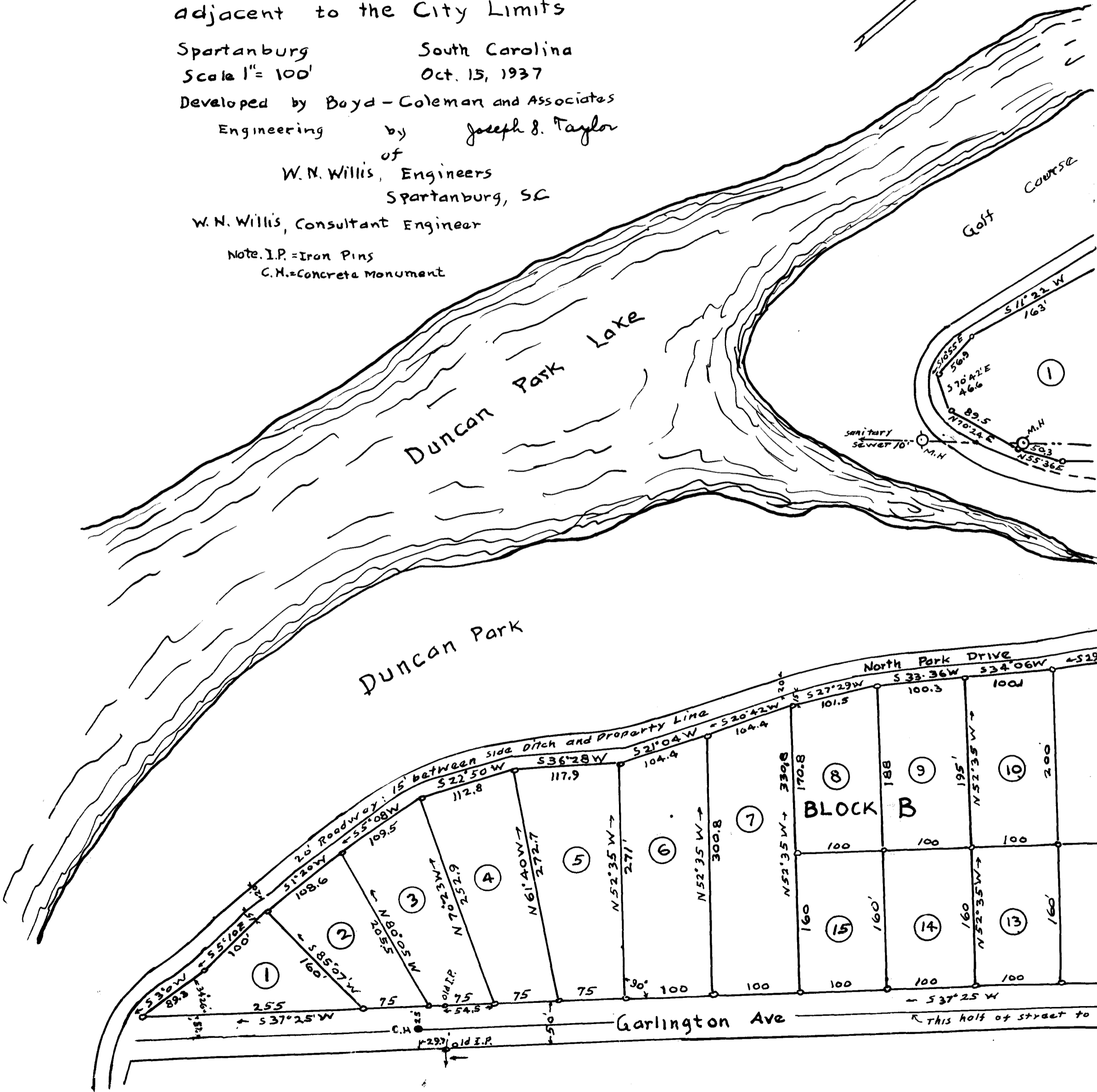
Located on the Northeastern boundary of Duncan Park and adjacent to the City Limits

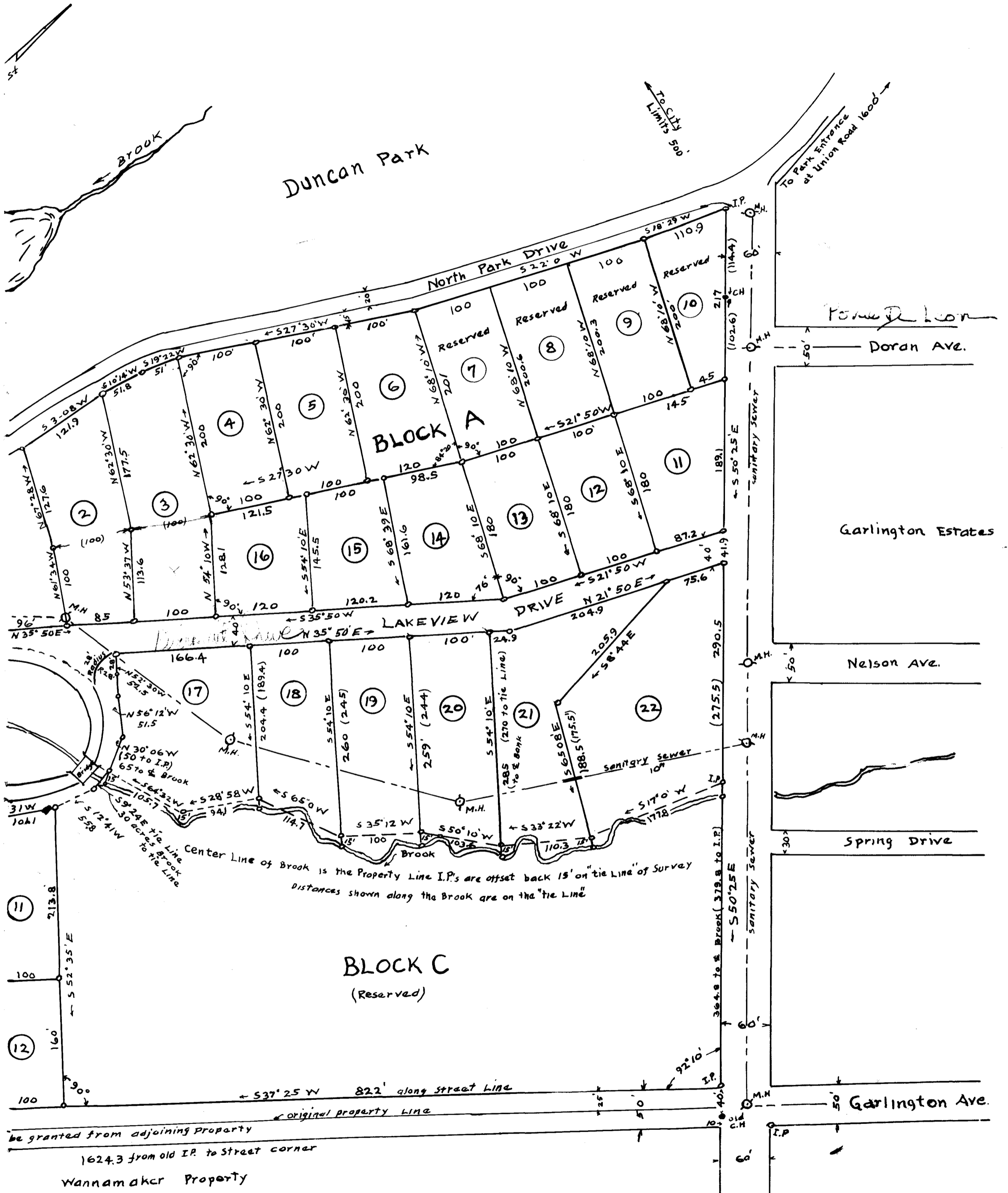
Spartanburg South Carolina
Scale 1" = 100' Oct. 15, 1937

Developed by Boyd - Coleman and Associates
Engineering by Joseph S. Taylor
of
W. N. Willis, Engineers
Spartanburg, S.C.
W. N. Willis, Consultant Engineer

Note: I.P. = Iron Pins
C.M. = Concrete Monument

Magnetic 1937
Declination 1° 05' W





Registered, Certified + Examined January 14th 1938 at 4:57 P.M.