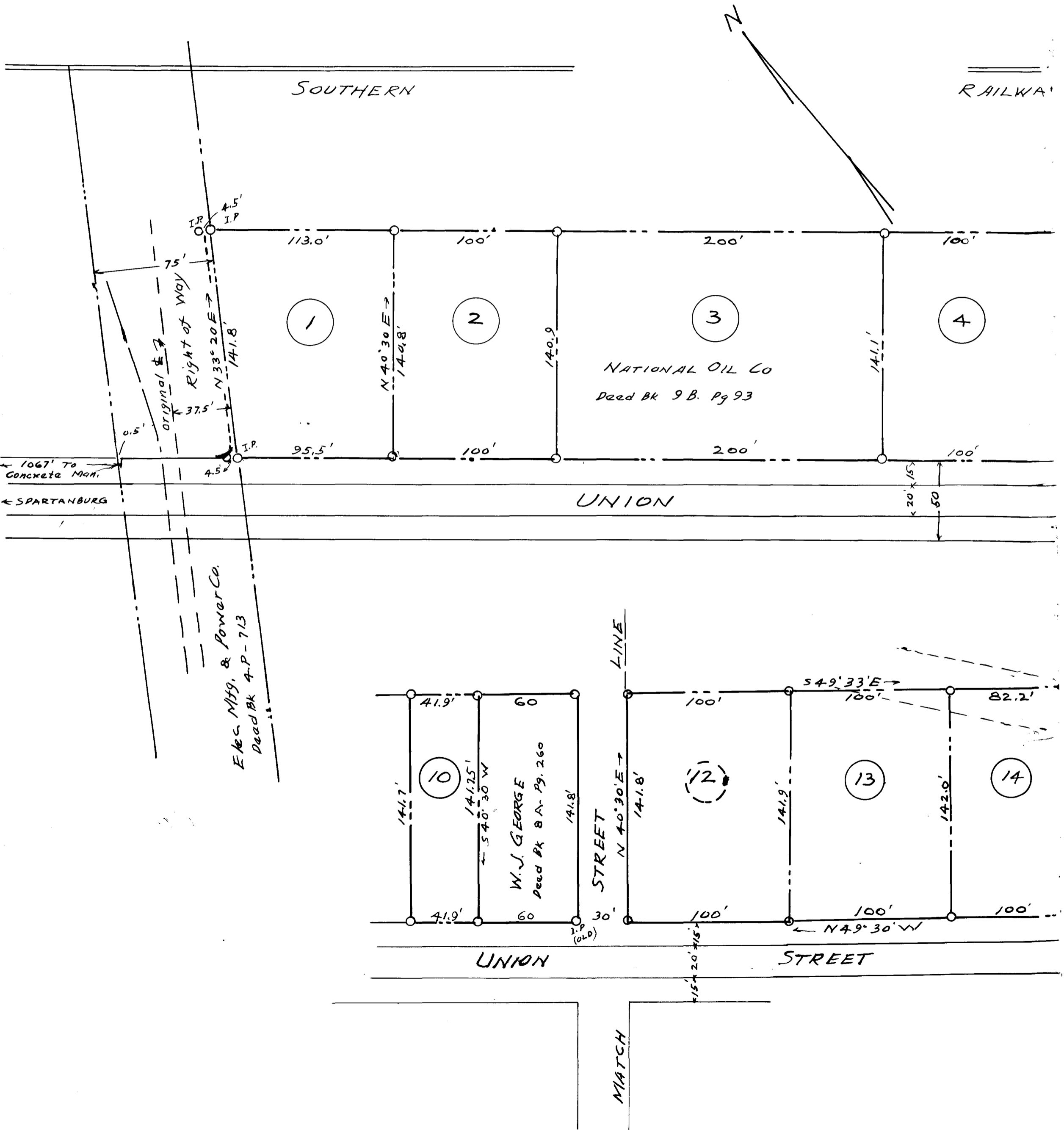
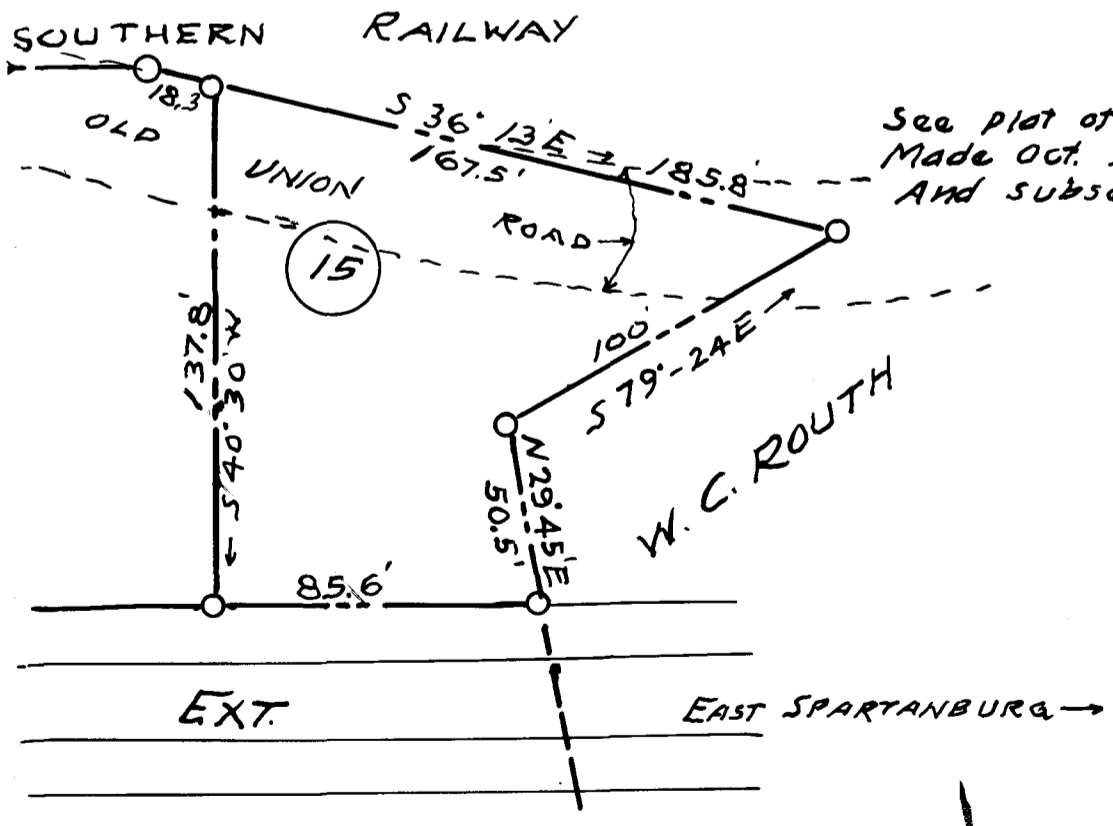
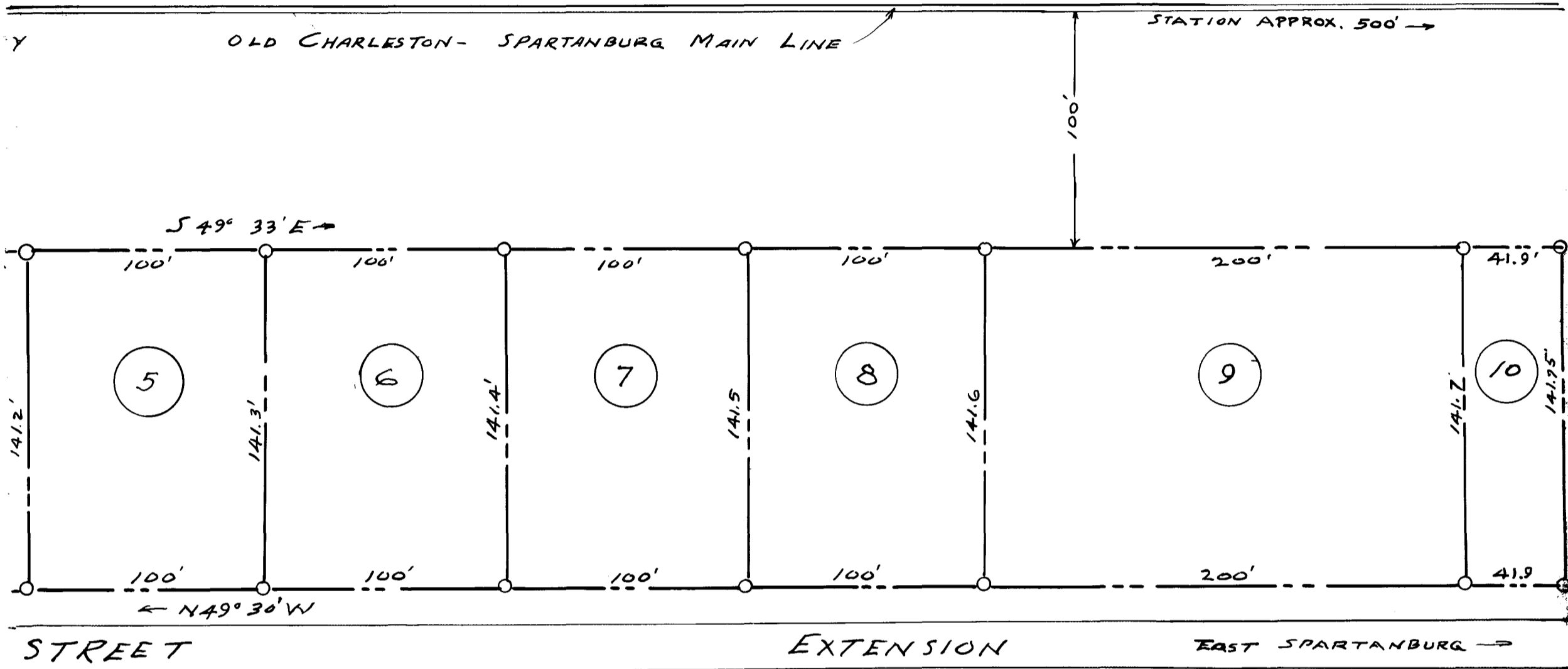


16

EX PARTE
DUNCAN - DILLINGHAM





See plot of D.R. Duncan Estate,
Made Oct. 31, 1910 By W.N. Willis, C.E.
And subsequent plats.

RE-SUBDIVISION OF DUNCAN - DILLINGHAM PROPERTY

NEAR EAST SPARTANBURG, S. C.
SCALE: 1" = 50'
MAR. 31, 1937.
REVISED JULY 2, 1937

The Harwood Beabe Co
Civil Engineers
Spartanburg, S.C.

NOTE: IRON PINS placed
at all corners.

Registered, Certified & Examined April 7, 1938 at 1:01 P.M.