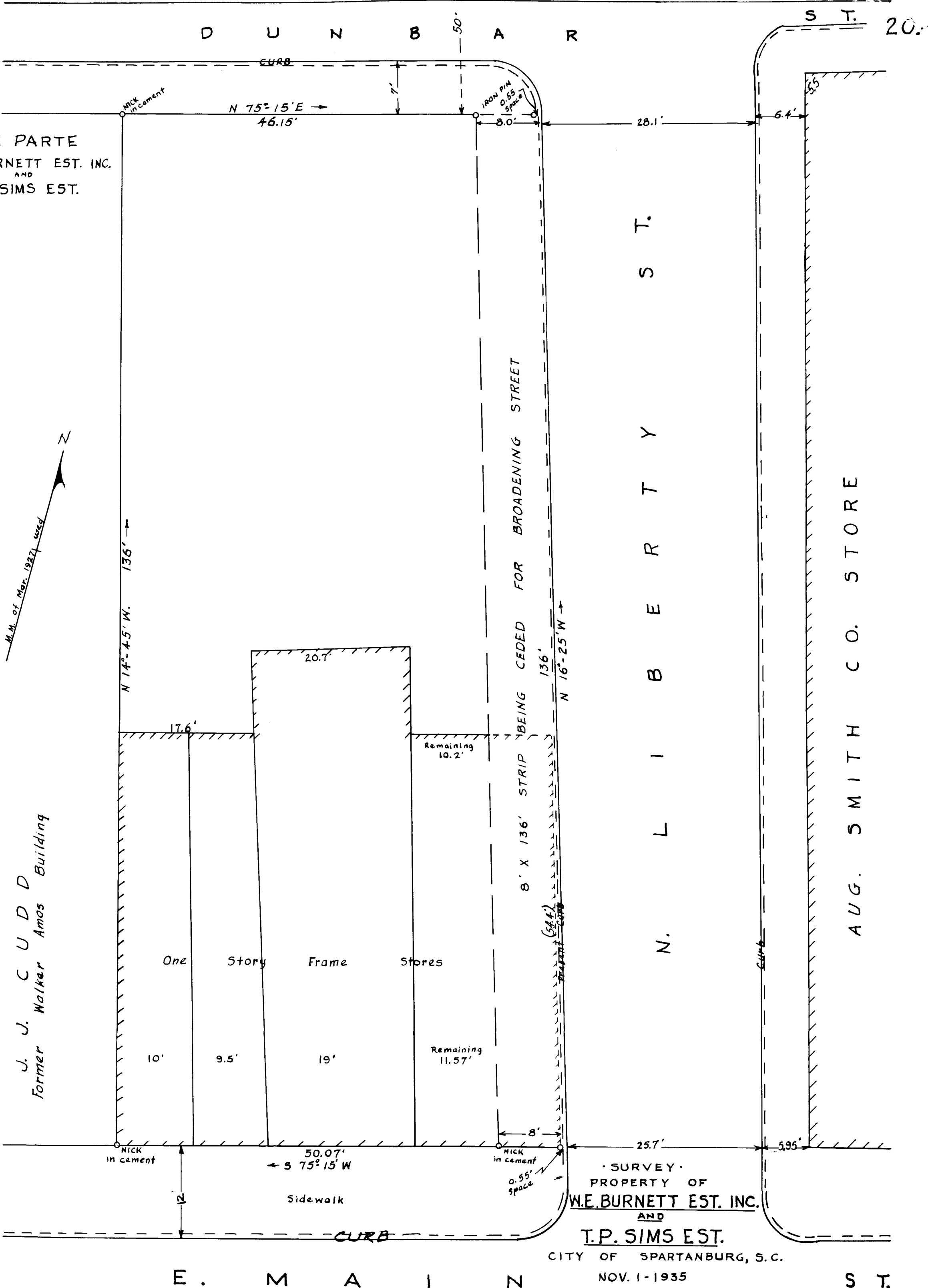
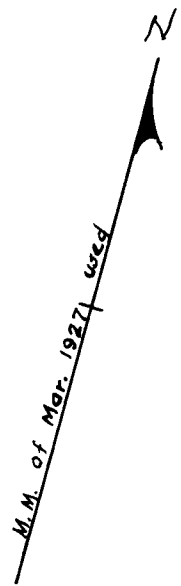


EX PARTE
W.E. BURNETT EST. INC.
AND
T.P. SIMS EST.



J. J. C U D D
Former Walker Amos Building

One Story Frame Stores

10' 9.5' 19'

Remaining 10.2'

Remaining 11.57'

· SURVEY ·
PROPERTY OF
W.E. BURNETT EST. INC.
AND
T.P. SIMS EST.

CITY OF SPARTANBURG, S.C.

NOV. 1-1935

H. STRIBLING, ENG. & SUR.

SCALE 1 INCH = 10 FEET

Registered, certified + Examined May 5th 1938 at 8:42 A.M.