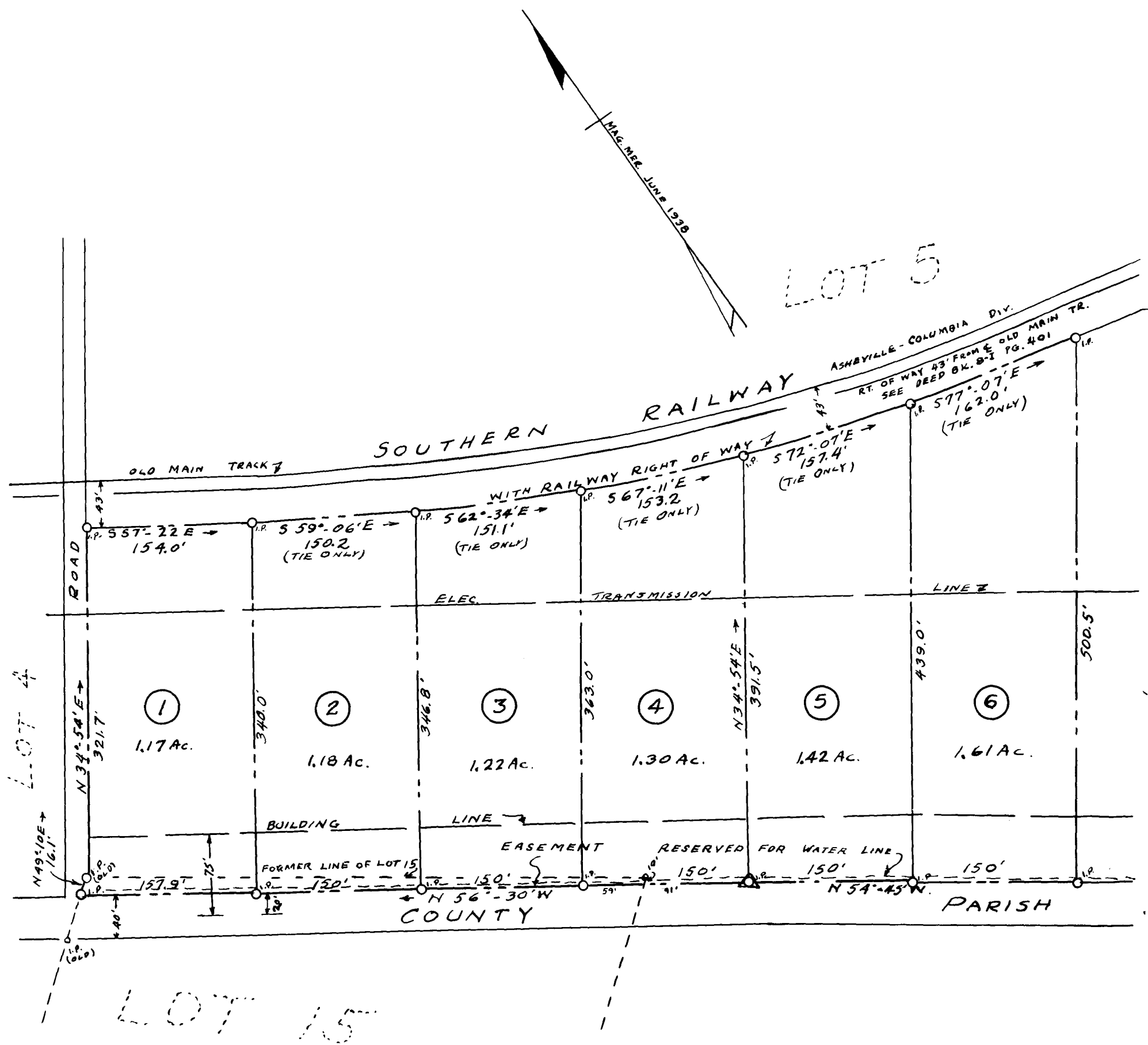
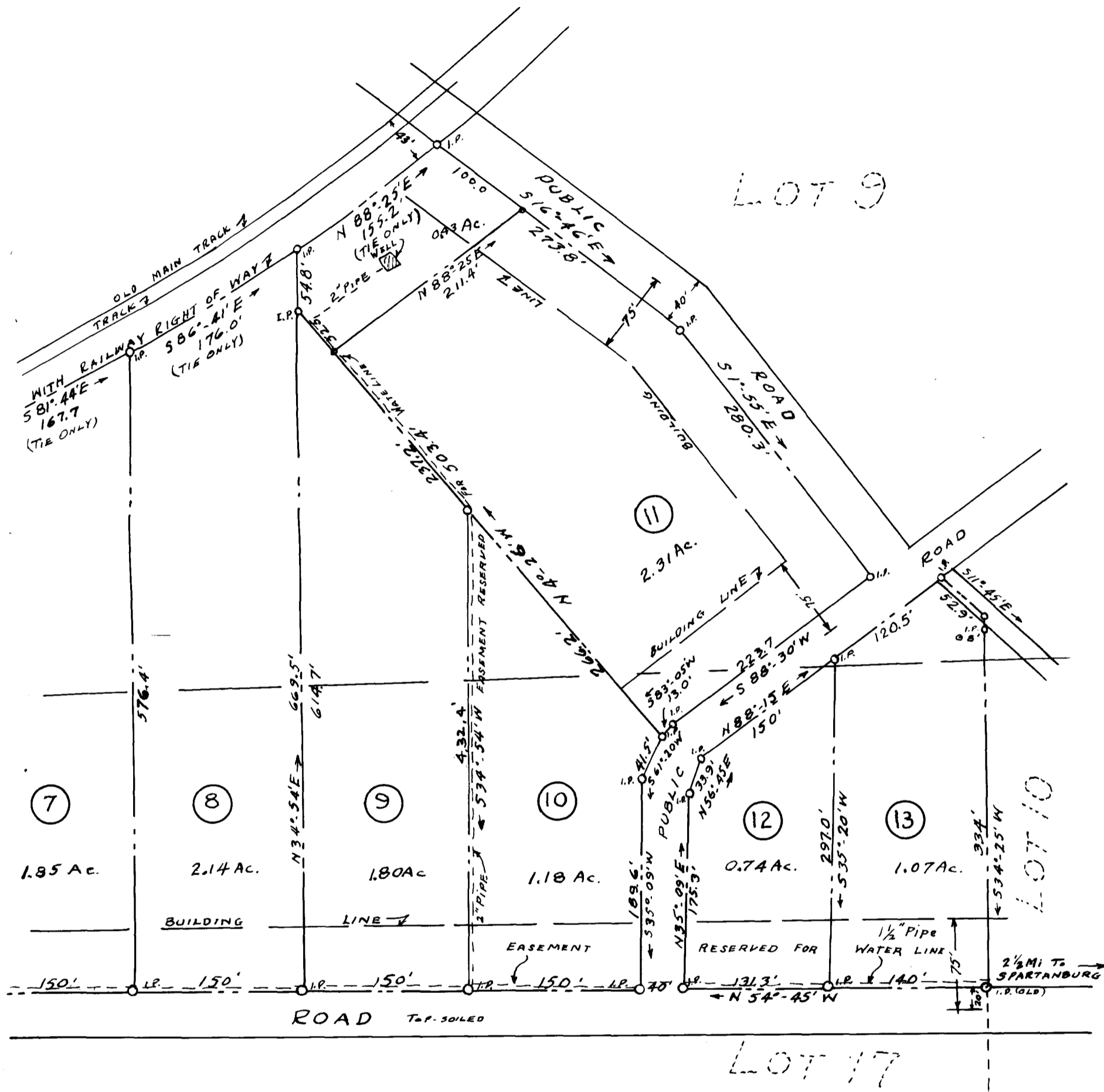


28.



EXPARTE
J. T. WILLARD



**SUBDIVISION
LOT No. 8. OF J. T. WILLARD PROP.**

NEAR SIGSBEE STA.
SPARTANBURG COUNTY, S.C.
SCALE 1" = 100' JUNE 9, 1938
SEE PLAT OF SUBDIVISION FOR MASTERS COURT
MADE BY H. STRIBLING, C.E. OCT. 27, 1932
J. H. GOOCH, SURV.
SPARTANBURG, S.C.

FIELD. - C. B. YASS

Registered, Certified + Examined August 15th 1938 at 3:10 P.M.