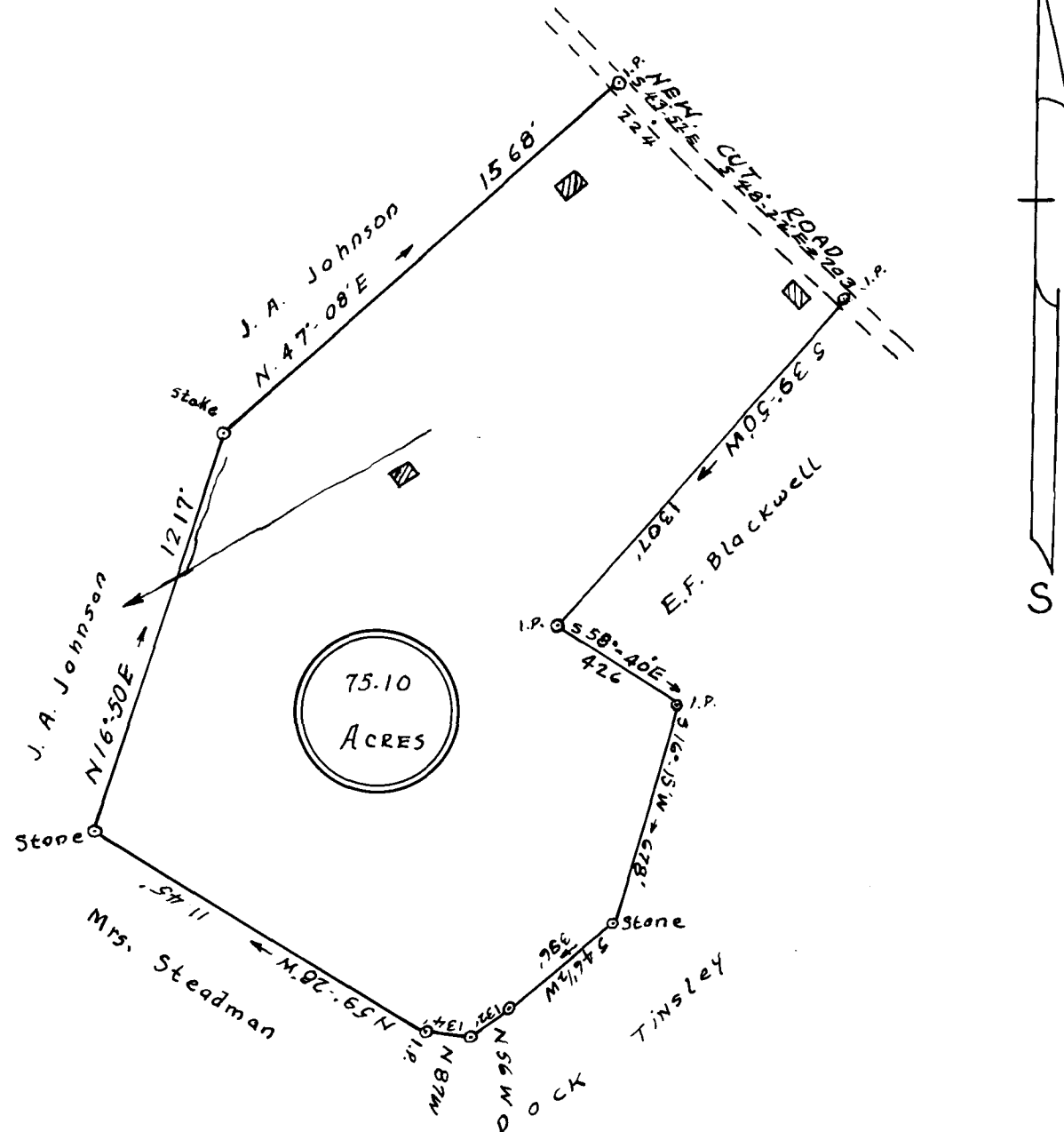


EXPARTE  
H. E. MAXWELL

Scale 1 IN. = 500 Ft.



State of South Carolina  
County of Spartanburg

I hereby certify that above tract of land as represented this Plat is a true and accurate representation of land owned by H.E. Maxwell, situated on southwest side of New Cut road in County and State aforesaid about three miles west of Inman.

This Land was re-surveyed by me Aug. 16 1933 from deeds for the land.

JH Atkins, surveyor  
Campobello, S.C.

Registered, certified & Examined August 17<sup>th</sup> 1938 at 3:54 P.M