

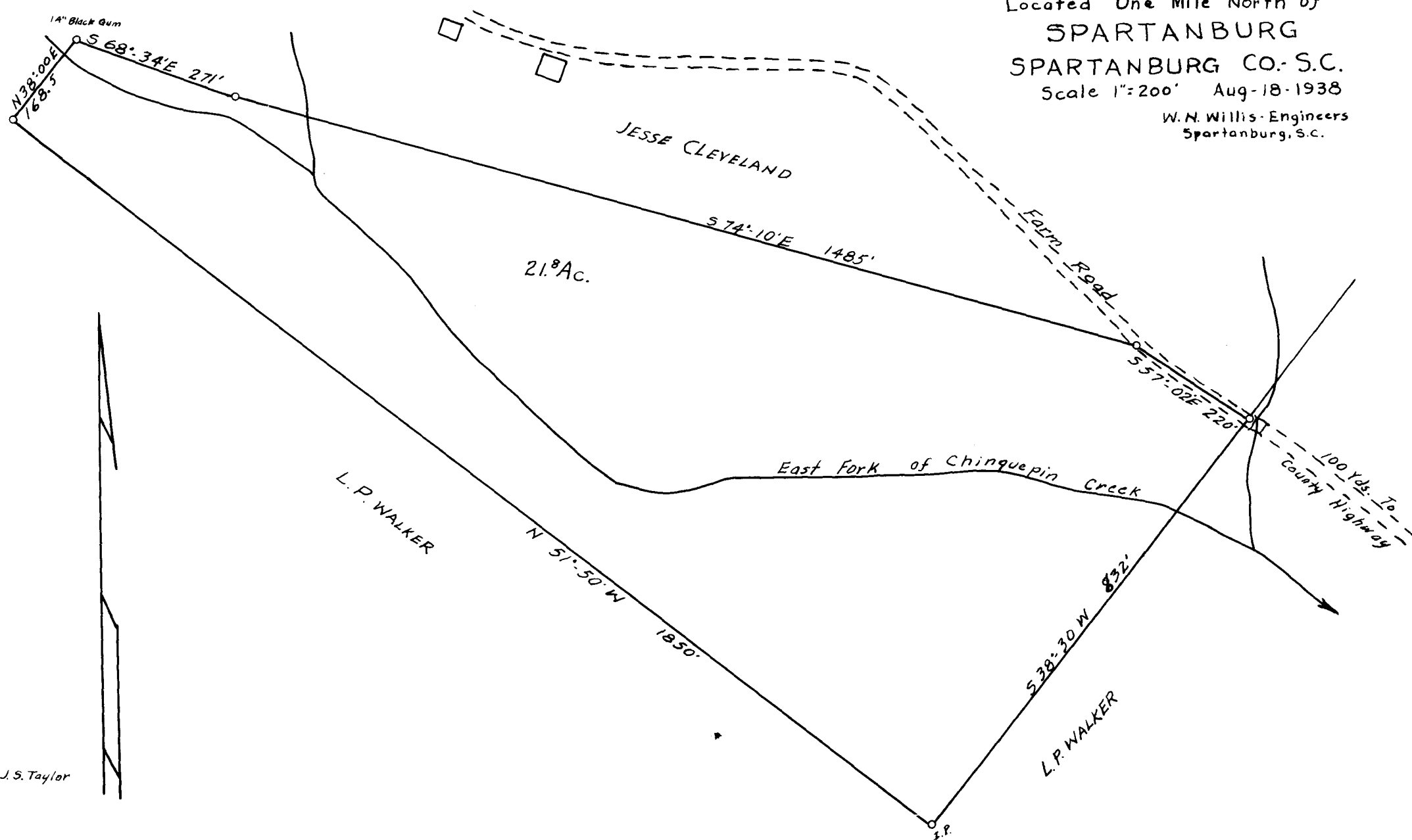
EX PARTE
JOHN GRAHAM JR.

SURVEY FOR
JOHN GRAHAM JR.

Part of Spartanburg OLD
WATER WORKS PROPERTY
Located One Mile North of
SPARTANBURG
SPARTANBURG CO. S.C.

Scale 1"=200' Aug-18-1938

W. N. Willis - Engineers
Spartanburg, S.C.



Field J.S. Taylor

Registered, Certified & Examined Aug. 26th 1938 at 10:18 A.M.