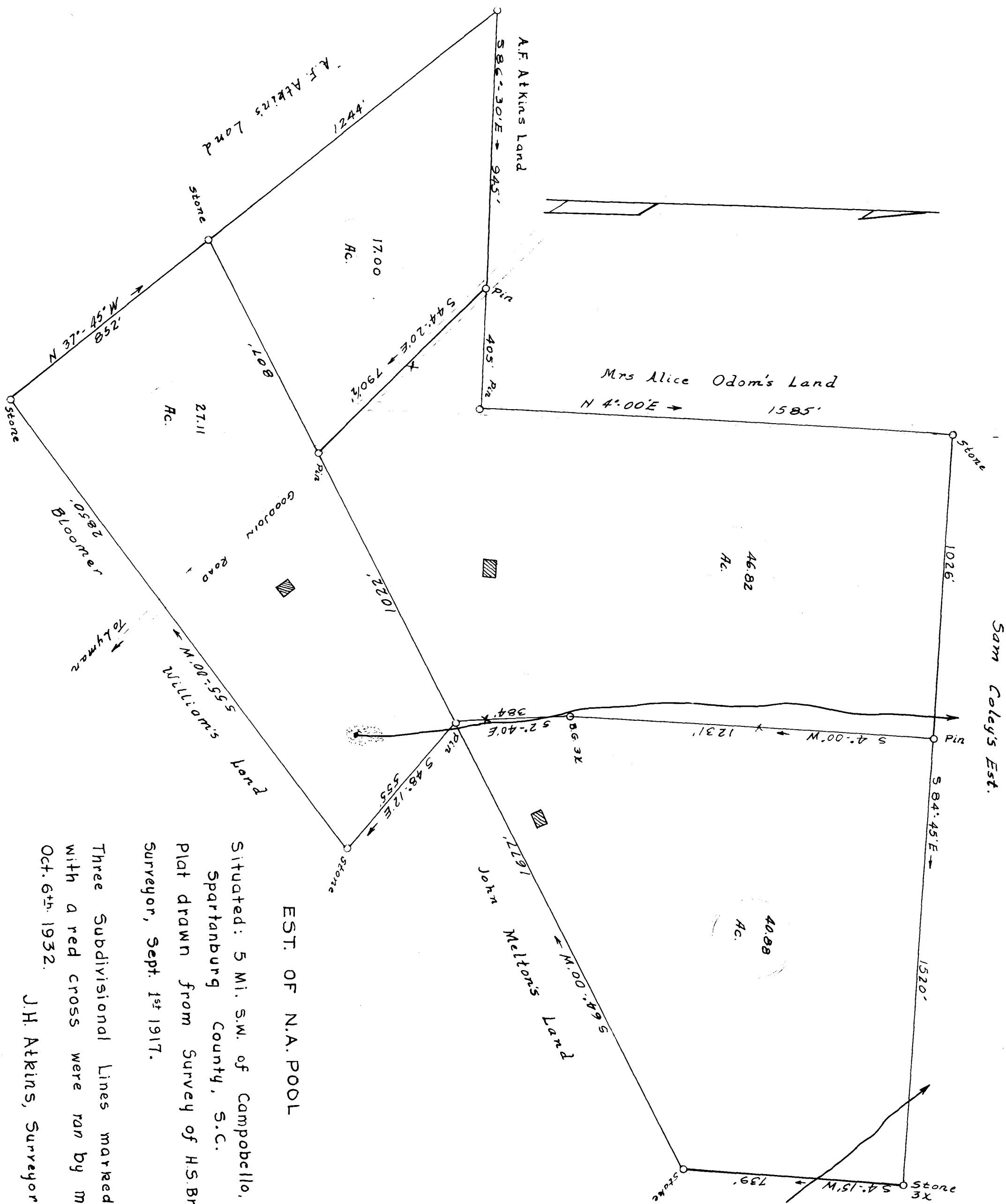


EXPARTE
EST. OF N.A. POOL

SCALE - 1-Inch = 300 Feet



EST. OF N.A. POOL

Situated: 5 Mi. S.W. of Campobello, S.C.
Spartanburg County, S.C.
Plat drawn from Survey of H.S. Brockman,
Surveyor, Sept. 1st 1917.

Three Subdivisional Lines marked
with a red cross were ran by me
Oct. 6th. 1932.
J.H. Atkins, Surveyor.

Registered, Certified & Examined Aug. 26, 1938 at 12:53 P.M.