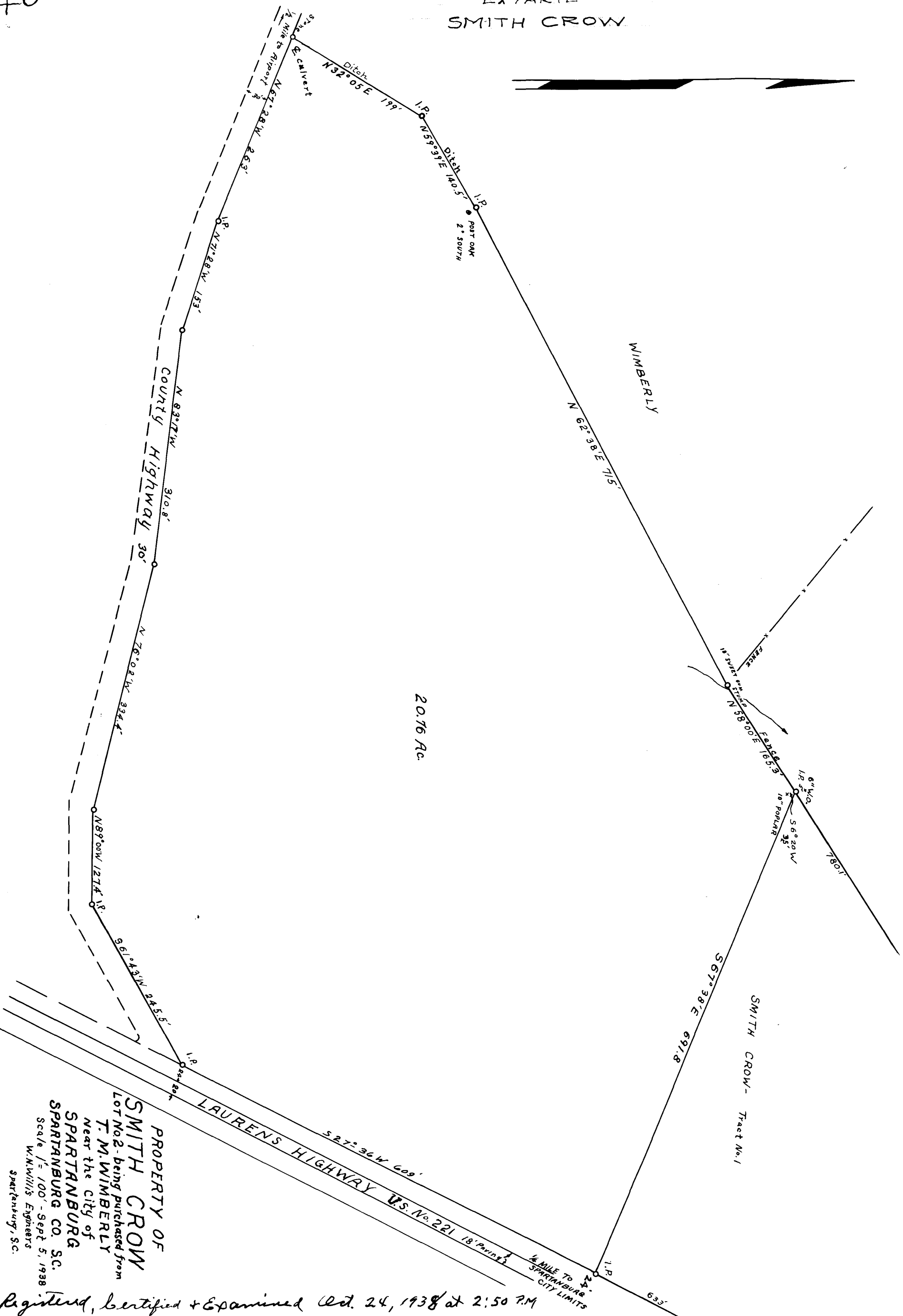


40

EX PARTE
SMITH CROW



PROPERTY OF
SMITH CROW
Lot No. 2, being purchased from
T. M. WIMBERLY
Near the City of
SPARTANBURG
SPARTANBURG CO. S.C.
Scale 1" = 100' - Sept 5, 1938
W. N. Willis Engineers
Spartanburg, S.C.
U. S. Taylor - Field

Registered, certified + Examined Oct. 24, 1938 at 2:50 P.M