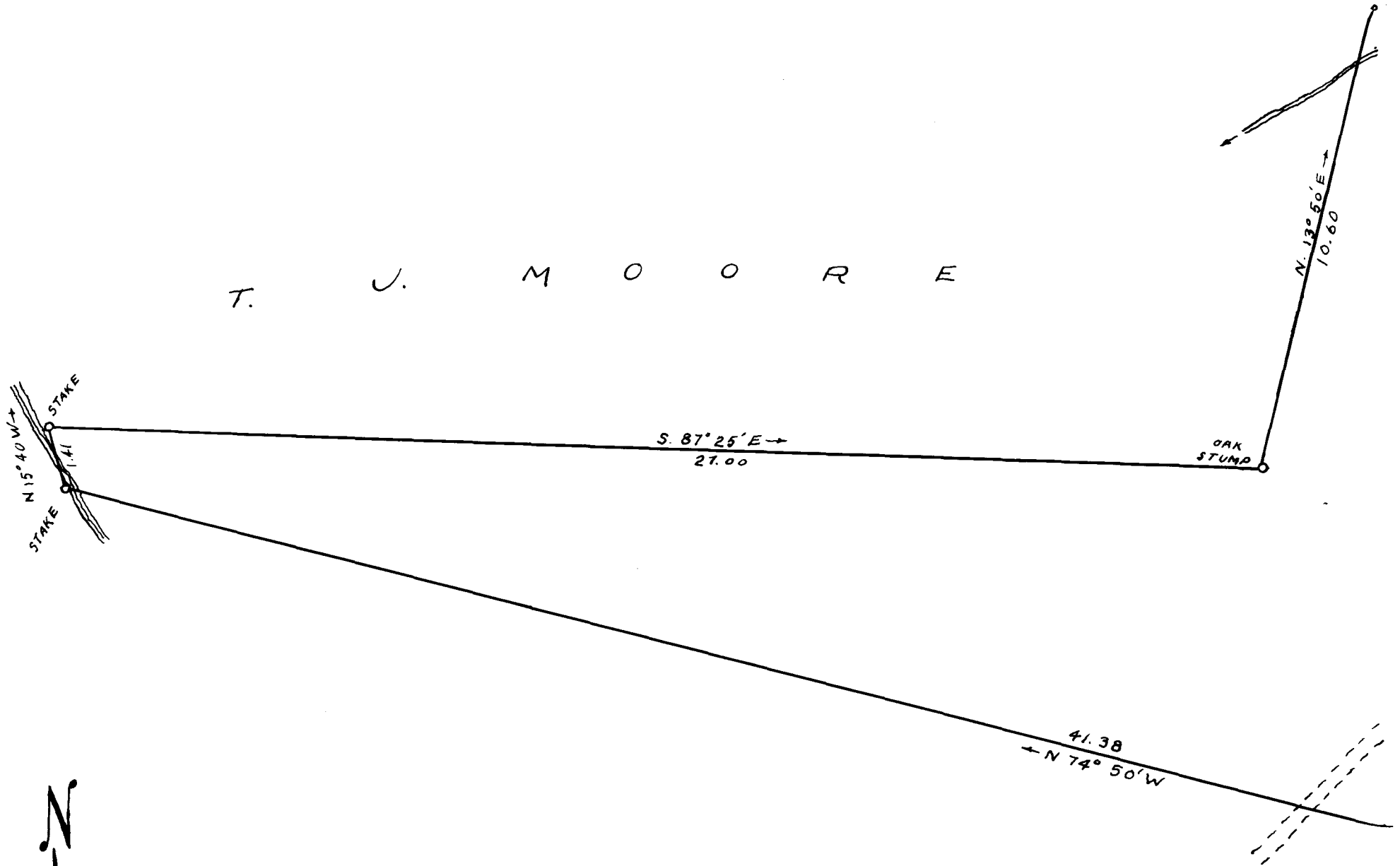


45

EX PARTE
BEN MOORE

T. J. M O O R E



Magnetic Meridian of Dec. 1936 Used

ACREAGE
 40.5
 37.1
 21.9

 105.5 ACRES

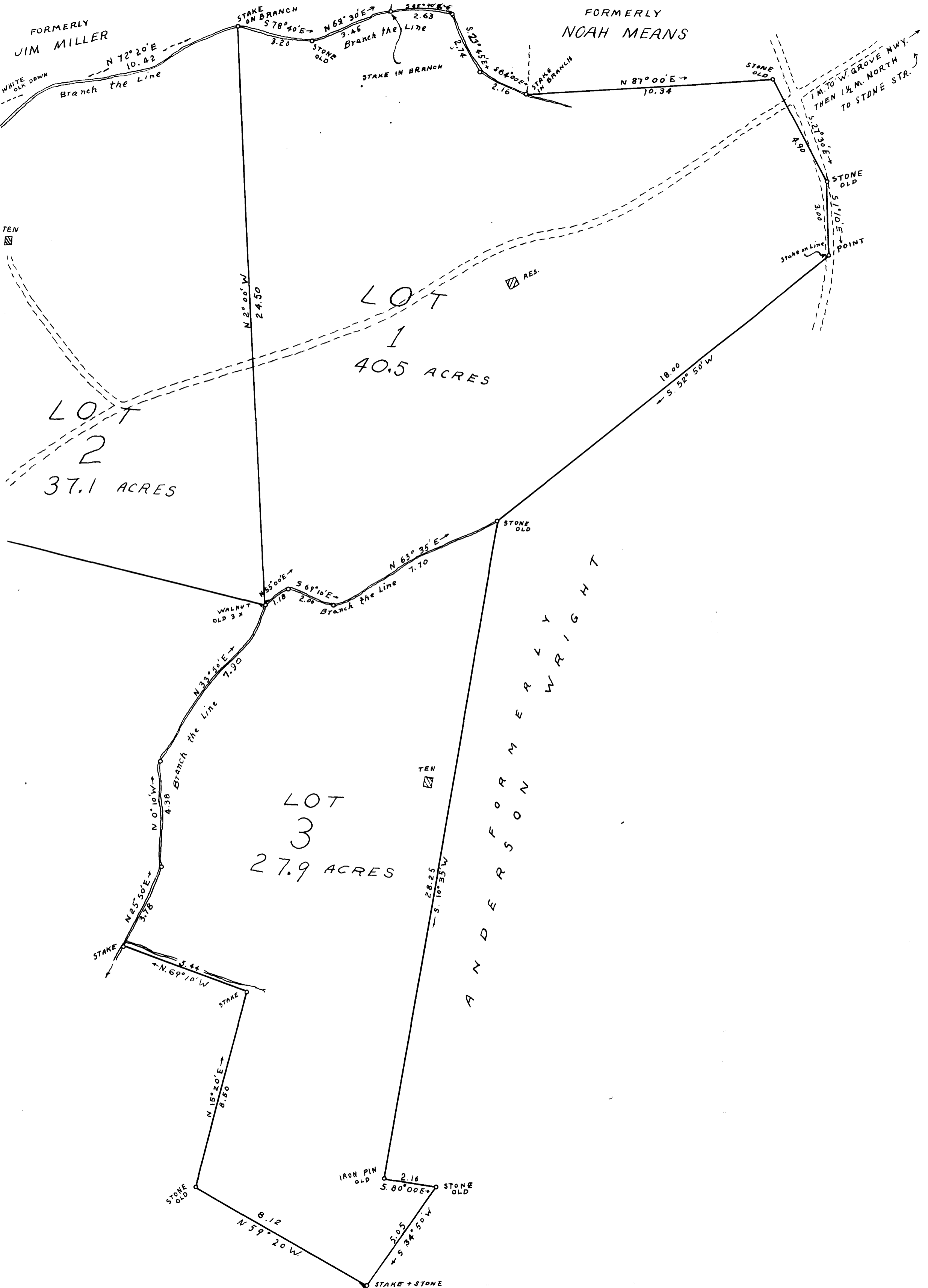
SURVEY
PROPERTY

OF
BEN MOORE
 2 1/2 M. S. W. OF STONE STA.
 SPARTANBURG CO., S.C.

DEC. 22, 1936.
 H. STRIBLING, Eng. + Sur.
 FIELD C. B. VASS

SCALE 1" INCH = 3 CHAINS

Registered, Certified + Examined Nov. 2nd 1938
 at 11:48 a. m.



FORMERLY
JIM MILLER

FORMERLY
NOAH MEANS

FORMERLY
WRIGHT

LOT
1
40.5 ACRES

LOT
2
37.1 ACRES

LOT
3
27.9 ACRES

Branch the Line
N 72° 20' E
10.42

Branch the Line
N 69° 30' E
3.45

Branch the Line
N 23° 50' E
7.90

Branch the Line
S 69° 10' E
2.00

STAKE
N 69° 10' W
5.44

STONE OLD
N 15° 20' E
8.50

IRON PIN OLD
STONE OLD
S 80° 00' E
2.16

STONE OLD
N 59° 20' W
8.12

STAKE + STONE

STONE OLD
N 87° 00' E
10.34

STONE OLD
S 12° 30' E
4.90

STONE OLD
S 10' E
3.00

STONE OLD
S 52° 50' W
18.00

1 M. TO W. GROVE NWY.
THEN 1/2 M. NORTH
TO STONE STR.

TEN

RES.

TEN

STAKE ON BRANCH
S 78° 40' E
3.20

STONE OLD
S 23° 45' E
2.16

STAKE IN BRANCH

STONE OLD

WALNUT OLD 3x
N 55° 00' E
1.18

STONE OLD

N 52° 01' S
28.25

STONE OLD

STONE OLD

STAKE + STONE