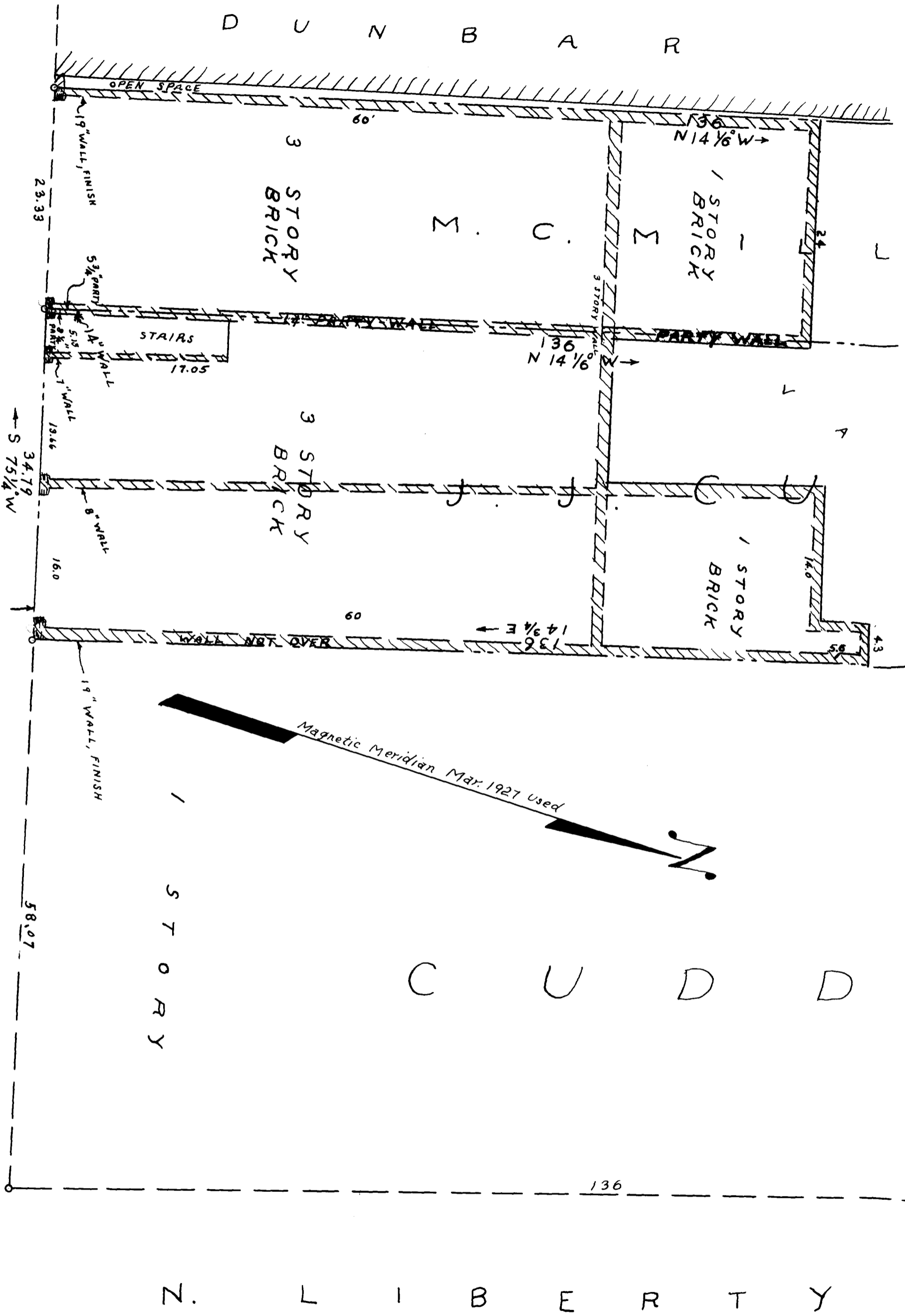


46

EX PARTE
J. J. CUDD

E. MAIN ST.

SIDEWALK



N. LIBERTY

C U D D

1
S
T
O
R
Y

3
S
T
O
R
Y
B
R
I
C
K

3
S
T
O
R
Y
B
R
I
C
K

M. C. W.

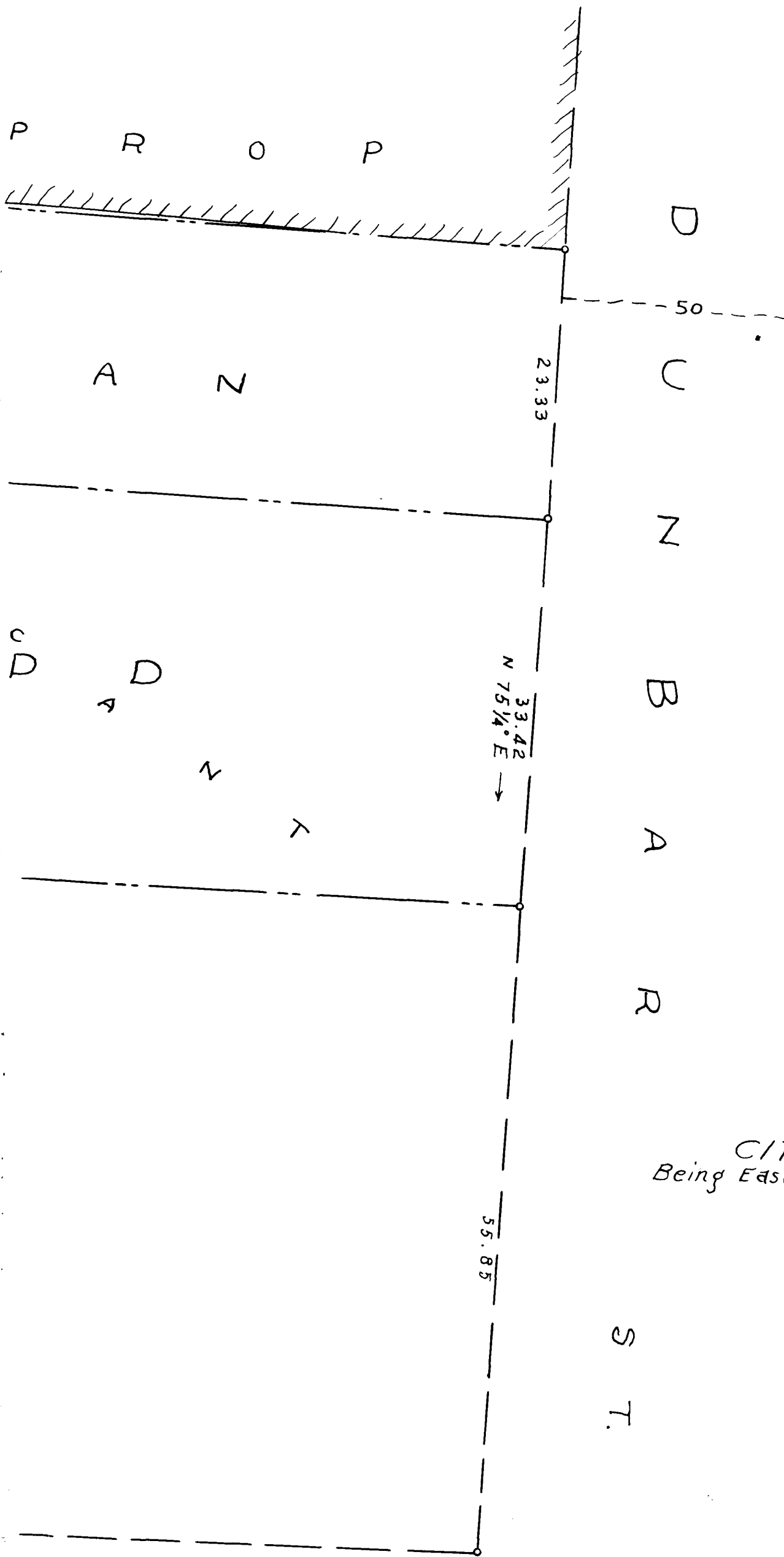
1
S
T
O
R
Y
B
R
I
C
K

1
S
T
O
R
Y
B
R
I
C
K

D U N B A R

136

Magnetic Meridian Mar. 1927 Used



SURVEY
OF
PROPERTY
OF
J. J. CUDD
CITY OF SPARTANBURG, S.C.
Being Eastern Portion (34.79' Frontage) of former Greenwald Lot
MAR 3, 1927
H. STRIBLING, C. E.
SCALE 1 INCH = 10 FEET

Registered, Certified & Examined Nov. 10, 1938 at 9:52 a.m.