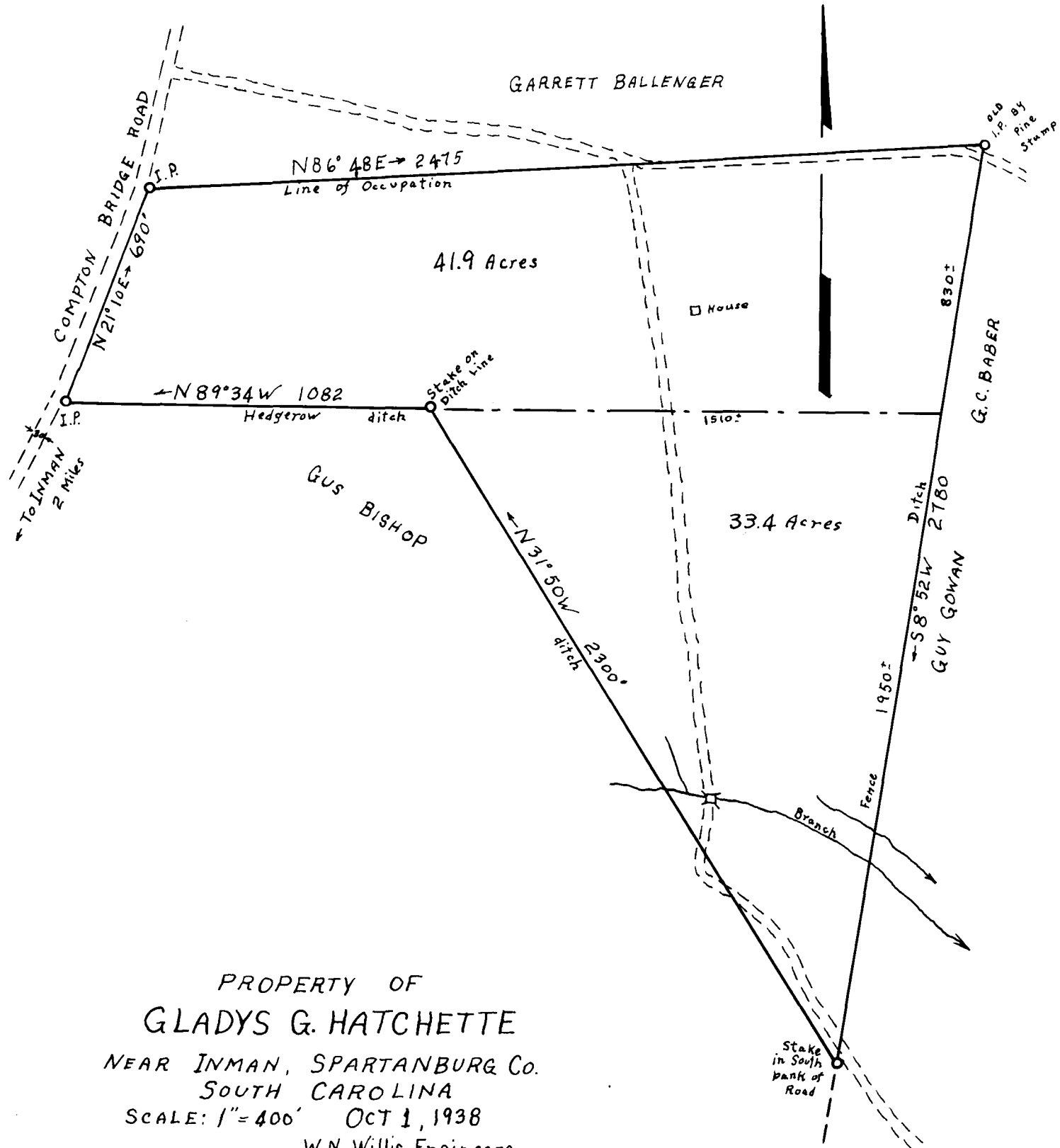


47

EX PARTE
GLADYS G. HATCHETTE



PROPERTY OF
GLADYS G. HATCHETTE
 NEAR INMAN, SPARTANBURG CO.
 SOUTH CAROLINA
 SCALE: 1" = 400' OCT 1, 1938
 W.N. Willis Engineers
 Spartanburg, S.C.

Field: J.S. Taylor

NOTE: THE ABOVE PLAT REPRESENTS AN ACTUAL FIELD SURVEY OF THE FORMER E.J. FINCH PROPERTY, ACCORDING TO ACCEPTED CORNERS AND LINES OF OCCUPATION, AS OF OCT. 1, 1938. DISTANCES IN LINES OF THE NORTH TRACT WERE FOUND TO BE SHORTER THAN AS SHOWN BY DEEDS AND RECORDS. PREVIOUS PLATS OF THE ABOVE PROPERTY MADE BY THIS OFFICE FOR E.J. FINCH (DATED AUG. 23, 1933, AND NOV. 25, 1933) WERE DRAWN FROM DEEDS AND RECORDS. AREAS NOTED ON SAID PLATS WERE BASED ON LENGTH OF LINES AS SHOWN BY DEEDS.

Registered, certified & Examined Nov. 21st 1938 at 3:27 P.M.