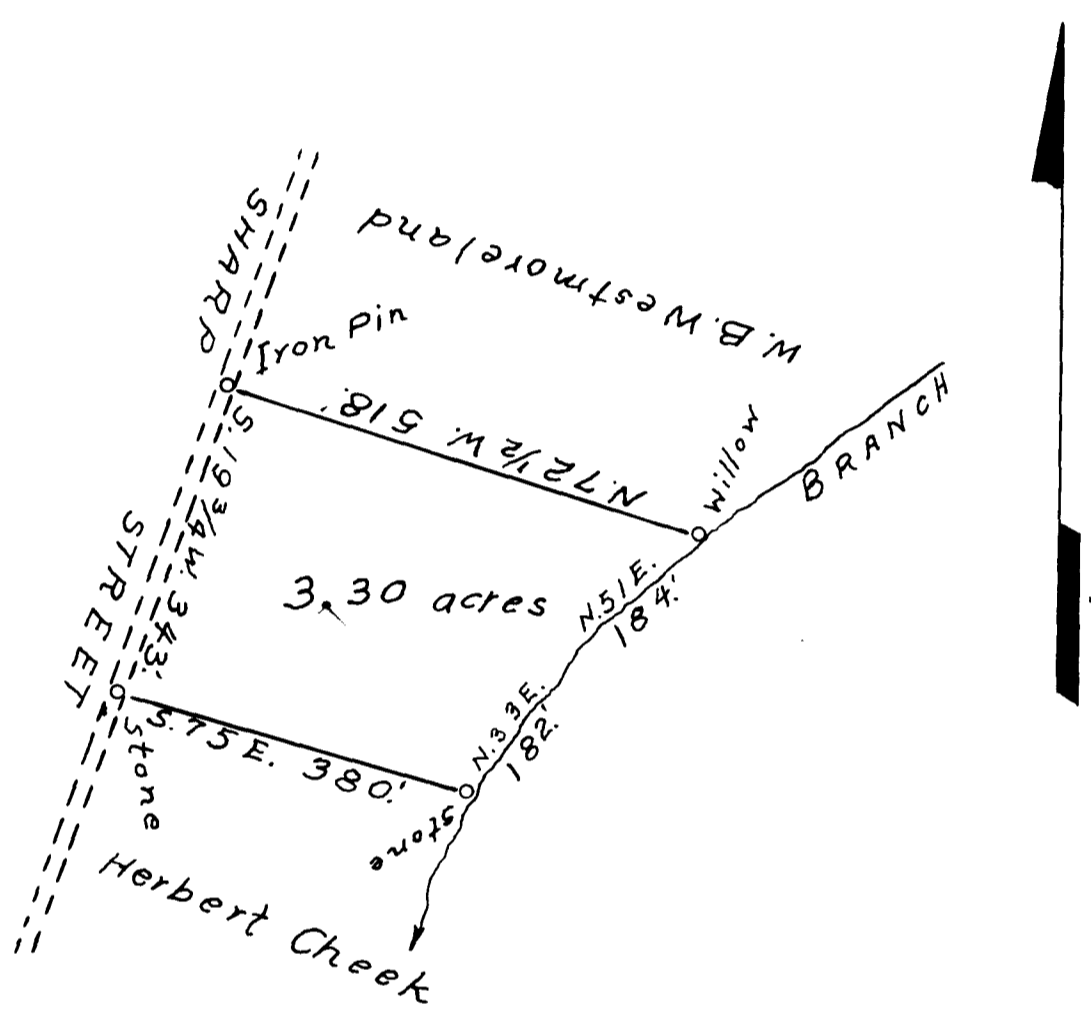


EX PARTE
NEW BETHEL SCHOOL



J. E. PATTERSON
to
NEW BETHEL SCHOOL

Located in the Town of
WOODRUFF, S. C.

Surveyed.
March 1922.

PAUL H. ANDERSON
Eng'r.

Scale: 200' = 1"

Registered, Certified & Examined December 10th 1938 at 10:23 A.M