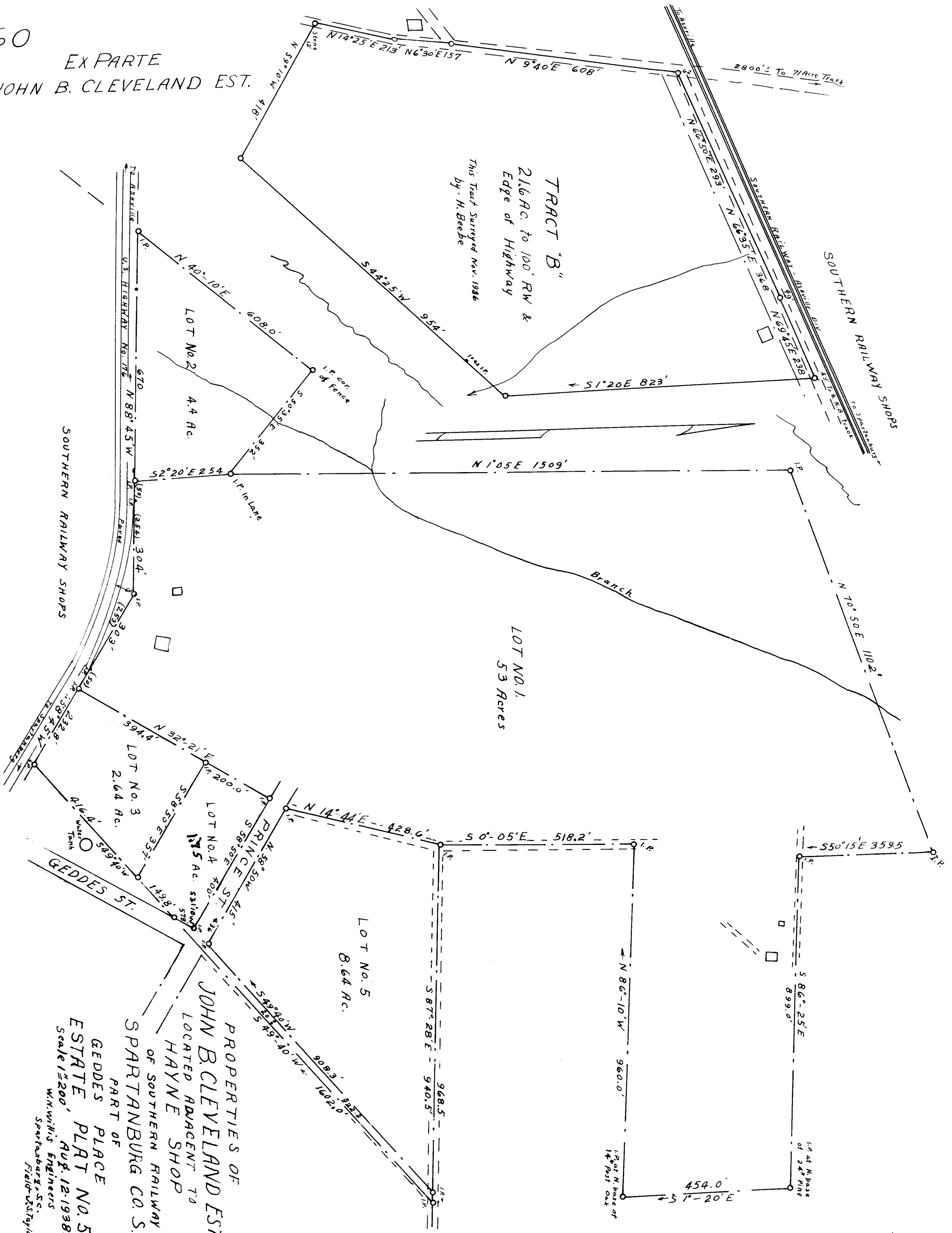


60

EX PARTE  
JOHN B. CLEVELAND EST.



TRACT "B"  
21.6 AC. TO 100' RW &  
EDGE OF HIGHWAY  
by H. Beebe  
This Tract Surveyed Nov. 1936

LOT NO. 1  
53 Acres

LOT NO. 5  
8.64 Ac.

PROPERTIES OF  
JOHN B. CLEVELAND EST.  
LOCATED ADJACENT TO  
HAYNE SHOP  
OF SOUTHERN RAILWAY  
SPARTANBURG CO. S.C.  
PART OF  
GEDDES PLACE  
ESTATE PLAT NO. 5

Scale 1"=200'  
AUG. 12-1938  
W.M. Williams Engineers  
Spartanburg, S.C.  
Field: V.S. Taylor

Registered, Certified + Examined Nov. 30<sup>th</sup> 1938 at 4:03 P.M.