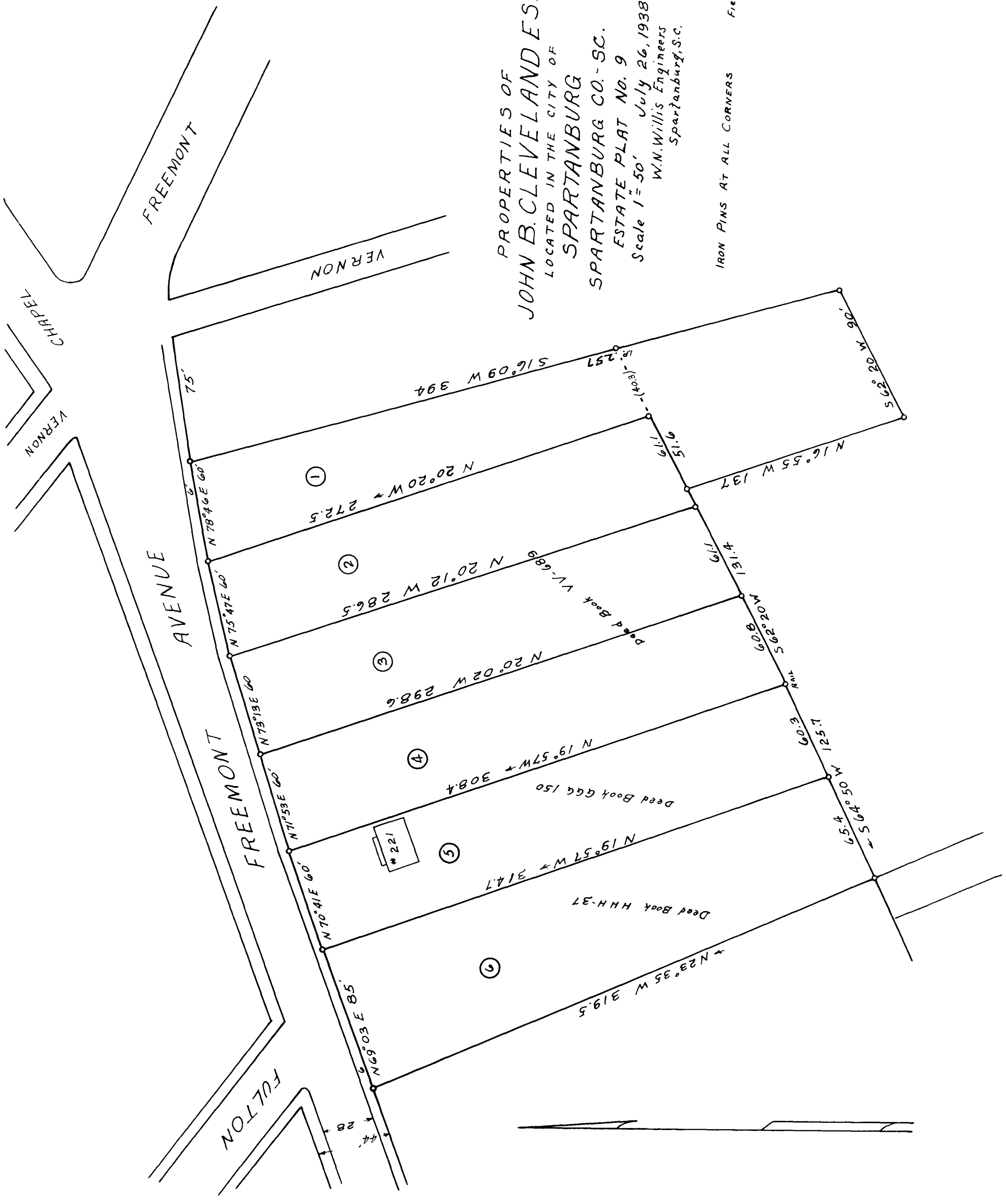


EX PARTE  
JOHN B. CLEVELAND EST.

PROPERTIES OF  
JOHN B. CLEVELAND EST.  
LOCATED IN THE CITY OF  
SPARTANBURG  
SPARTANBURG CO. - SC.  
ESTATE PLAT NO. 9  
Scale 1" = 50' July 26, 1938  
W.N. Willis Engineers  
Spartanburg, S.C.

IRON PINS AT ALL CORNERS  
Field J.S. Taylor



Registered, Certified & Examined Nov. 30, 1930 at 4:06 P.M.