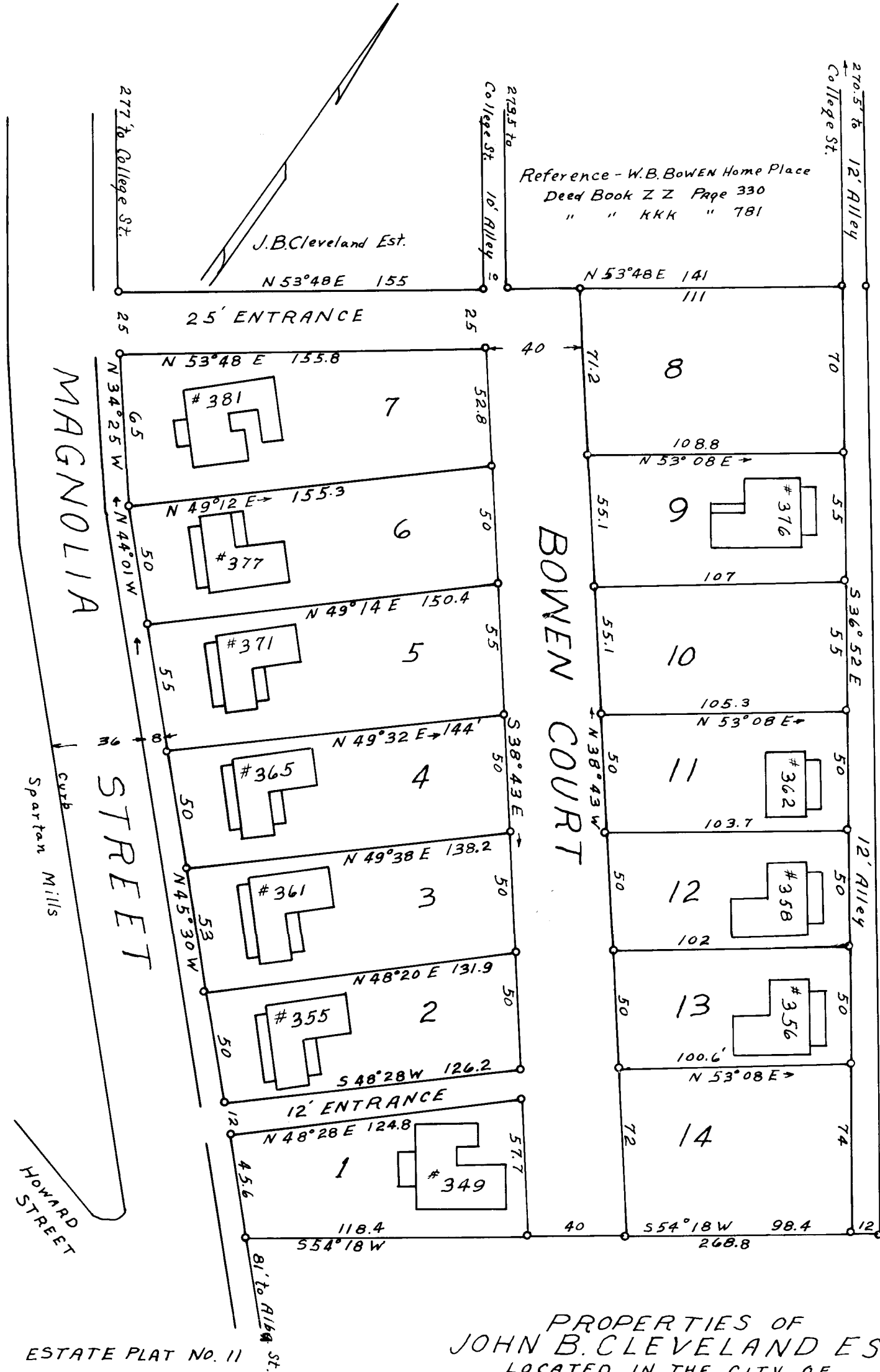


EX PARTE
JOHN B. CLEVELAND EST.



ESTATE PLAT No. 11
Field J.S.Taylor Iron Pins at all Corners

PROPERTIES OF
JOHN B. CLEVELAND EST.
LOCATED IN THE CITY OF
SPARTANBURG
SPARTANBURG CO. S.C.
Scale 1" = 50' July 25, 1938

W.N. Willis Engineers
Spartanburg, S.C.

Registered, Certified & Examined Nov. 30th 1938 at 4:06 P.M.