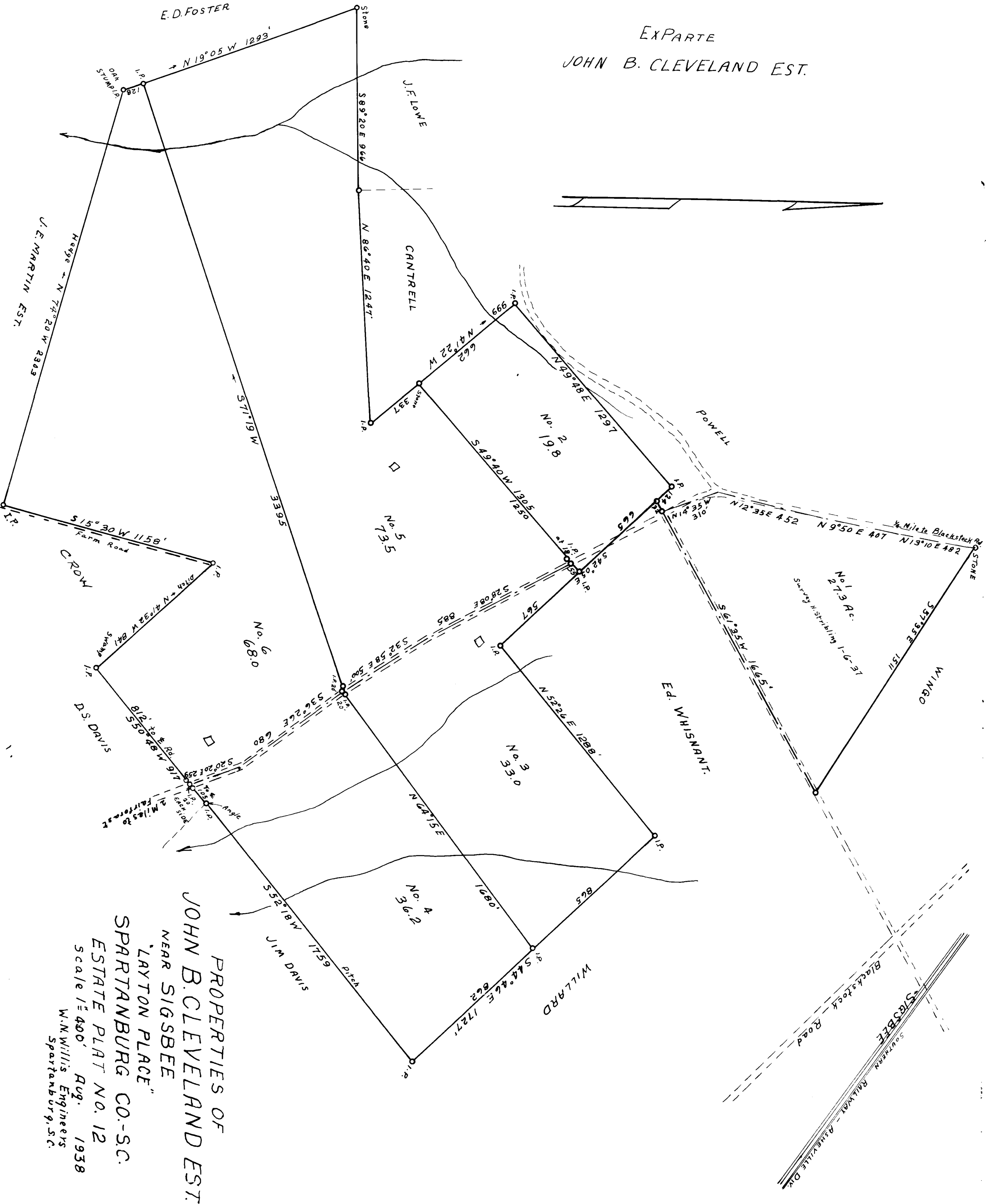


67



PROPERTIES OF  
 JOHN B. CLEVELAND EST.  
 NEAR SIGSBEE  
 "LAYTON PLACE"  
 SPARTANBURG CO.-S.C.  
 ESTATE PLAT NO. 12  
 Scale 1"=400' Aug. 1938  
 W.M. Willis Engineers  
 Spartanburg, S.C.

Registered, certified & Examined Nov. 30<sup>th</sup> 1938 at 4:06 P.M.