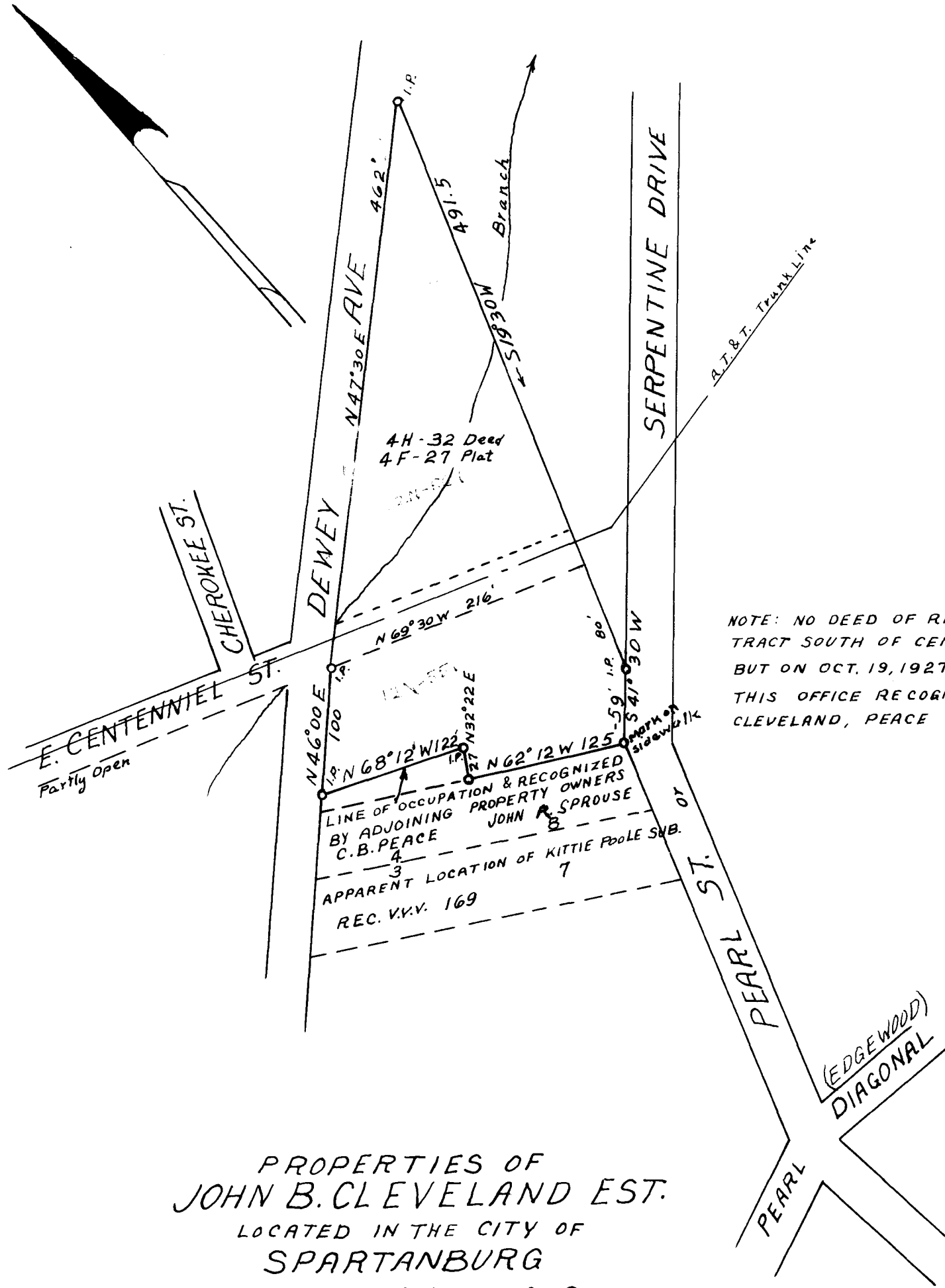


EX PARTE  
JOHN B. CLEVELAND EST.



PROPERTIES OF  
JOHN B. CLEVELAND EST.  
LOCATED IN THE CITY OF  
SPARTANBURG  
SPARTANBURG CO.-S.C.  
ESTATE PLAT NO. 13  
Scale 1"=100' JUNE 17, 1938  
W.N. Willis - Engineers  
Spartanburg S.C.

Field J. S. Taylor  
Plat - W. N. W.

Registered, Certified & Examined Nov, 30<sup>th</sup> 1938 at 4:05 P.M