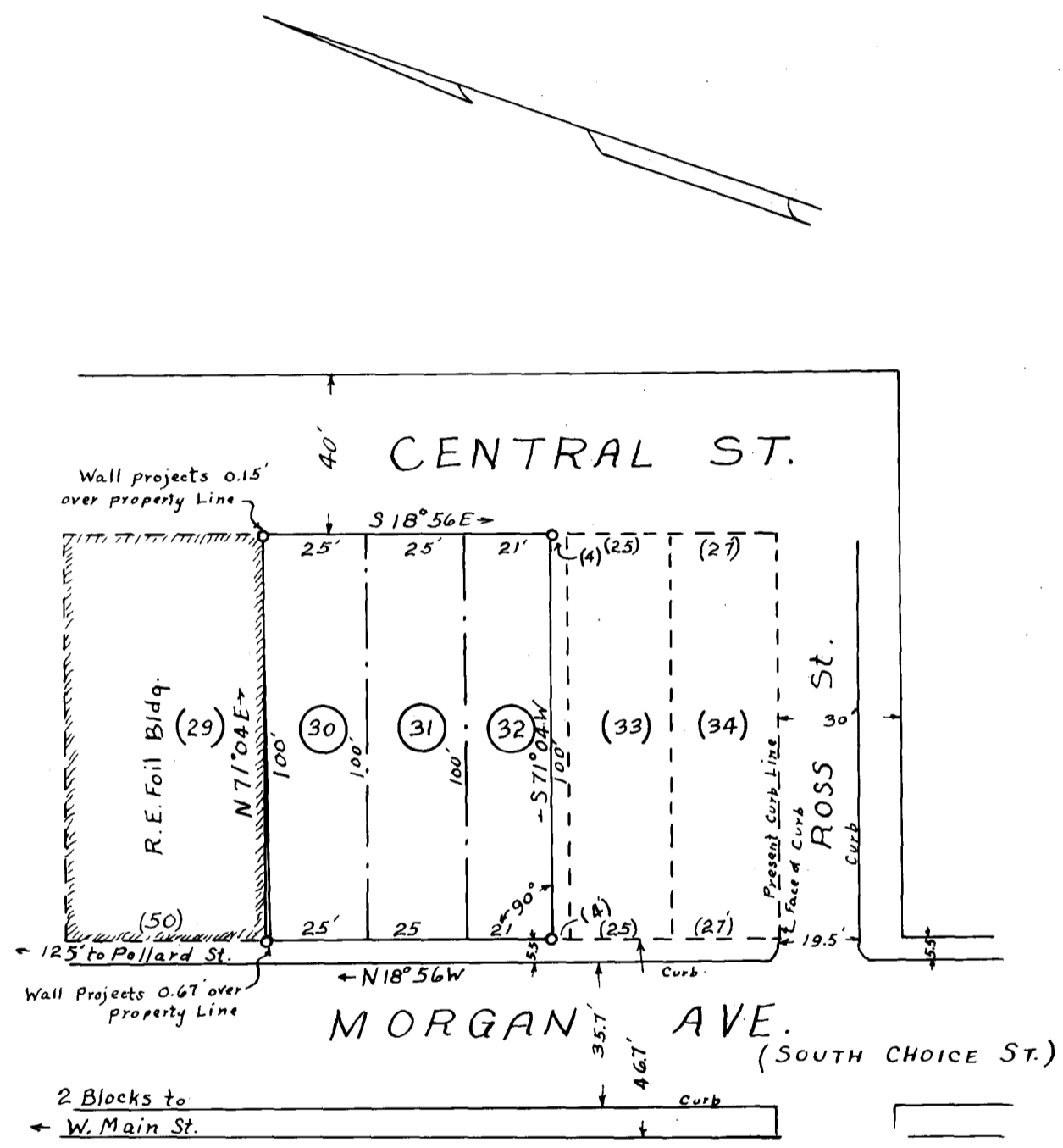


EX PARTE
JOHN B. CLEVELAND EST.



PROPERTIES OF
JOHN B. CLEVELAND EST.

LOCATED IN THE CITY OF
SPARTANBURG

SPARTANBURG CO.-S.C.

ESTATE PLAT NO. 16
Scale 1"=40' July 15-1938

W.N. Willis-Engineers
Spartanburg, S.C.

Records Deed 5 Q-339
Plat Book 5-45
Field - J.S. Taylor.

Registered, Certified & Examined Nov. 30th 1938 at 4:06 P.M.