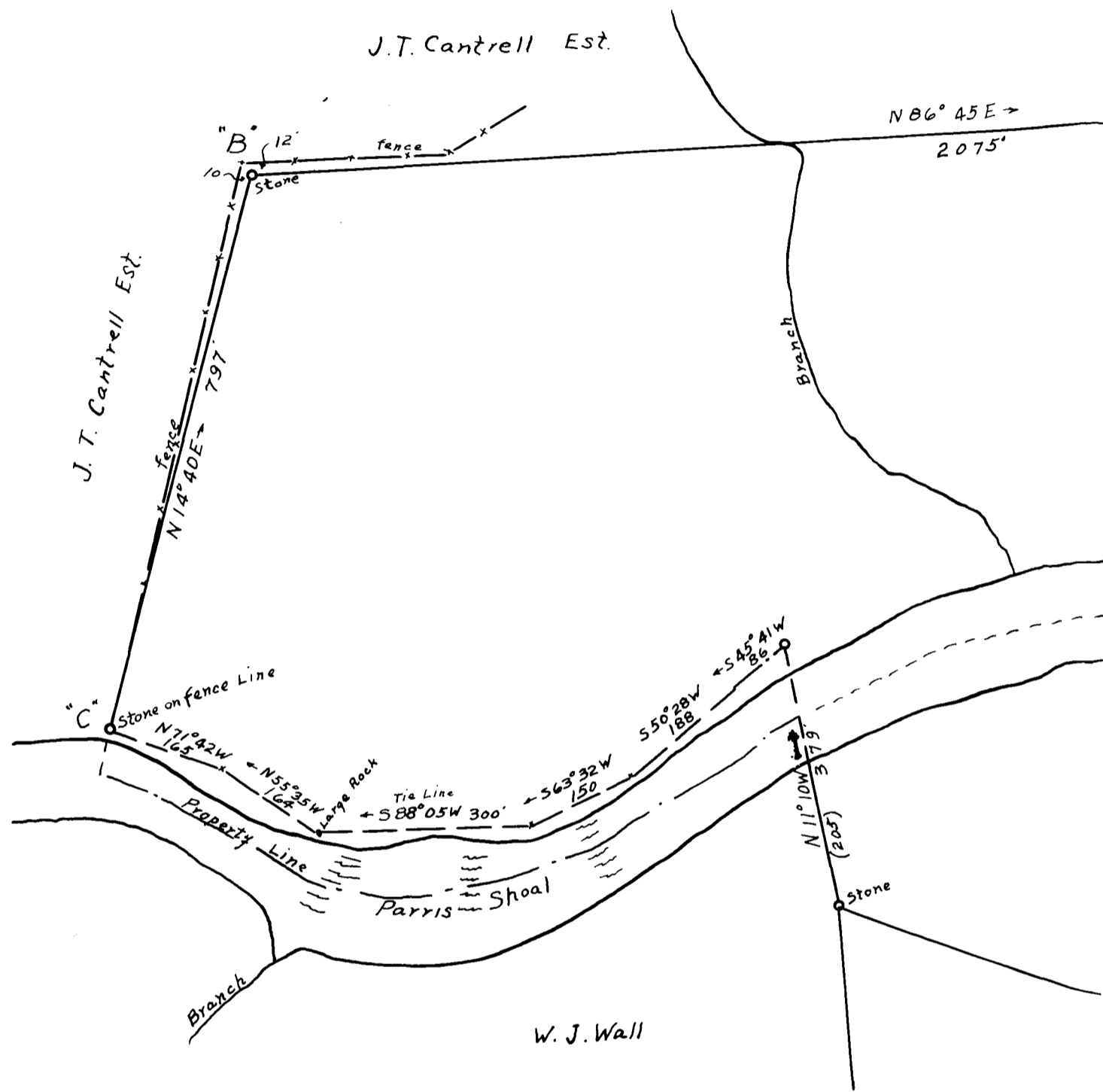


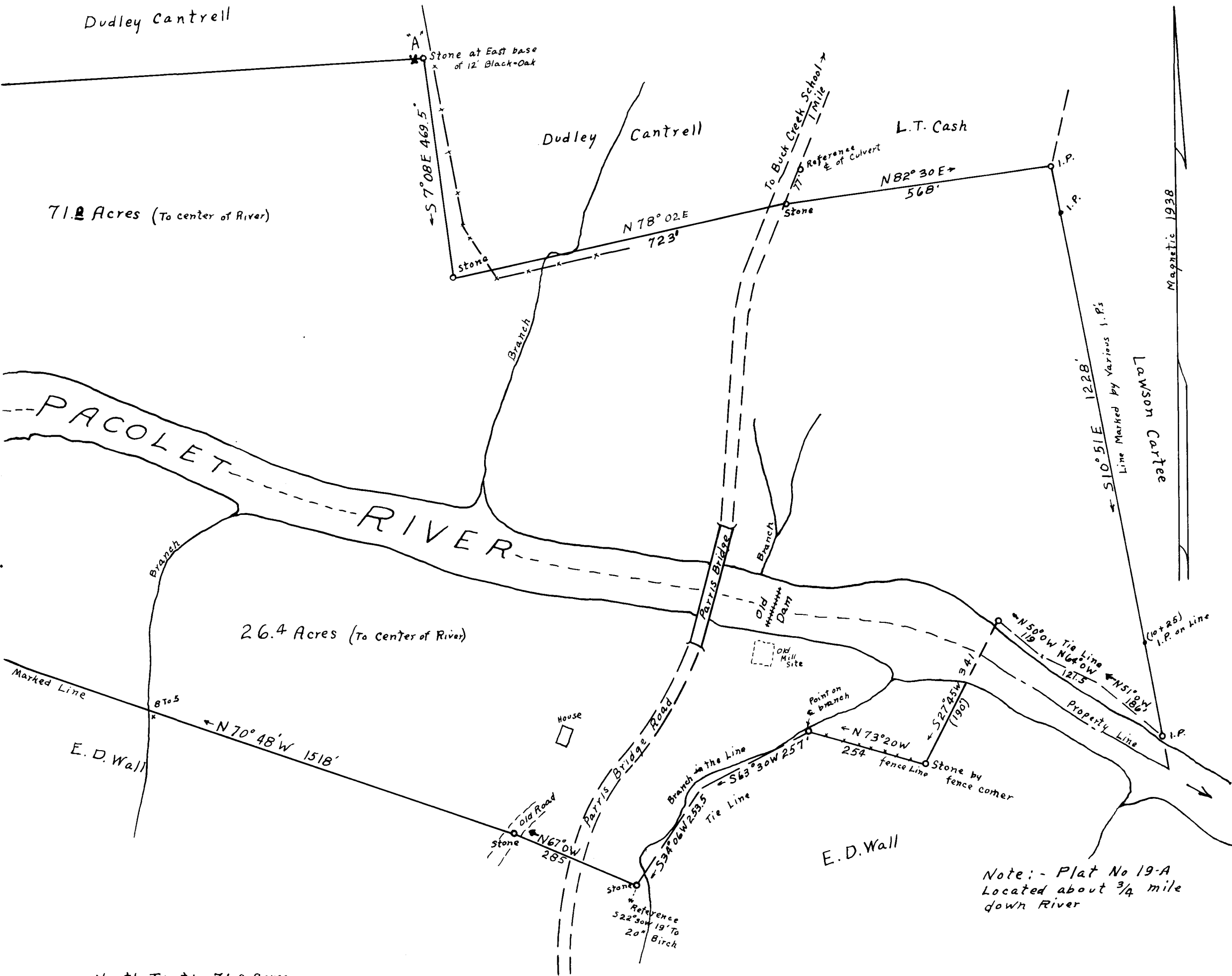
74

EX PARTE
JOHN B. CLEVELAND EST.



Field J.S. Taylor

PROPERTIES OF
 JOHN B. CLEVELAND EST.
 PARRIS MILL TRACT
 LOCATED AT PARRIS BRIDGE
 ON PACOLET RIVER
 SPARTANBURG COUNTY - S.C.
 ESTATE PLAT No. 19
 Scale 1" = 200' July 1938
 W. N. Willis - Engineers
 Spartanburg, S.C.



North Tract: 71.0 Acres
 South Tract: 26.4 "
 Total 97.4 Acres

DEED REFERENCES: 4-E PAGE 207; 4-G PAGE 82. THIS SURVEY IS BASED ON DATA FROM DEEDS OF ADJOINING PROPERTIES, AND PRESENT LINE OF OCCUPATION: LINE FROM 'A' TO 'C' IS BASED ON OCCUPATION ONLY. DISTANCE BY CHAIN.

Registered, Certified & Examined Nov. 30th 1938 at 4:06 P.M.