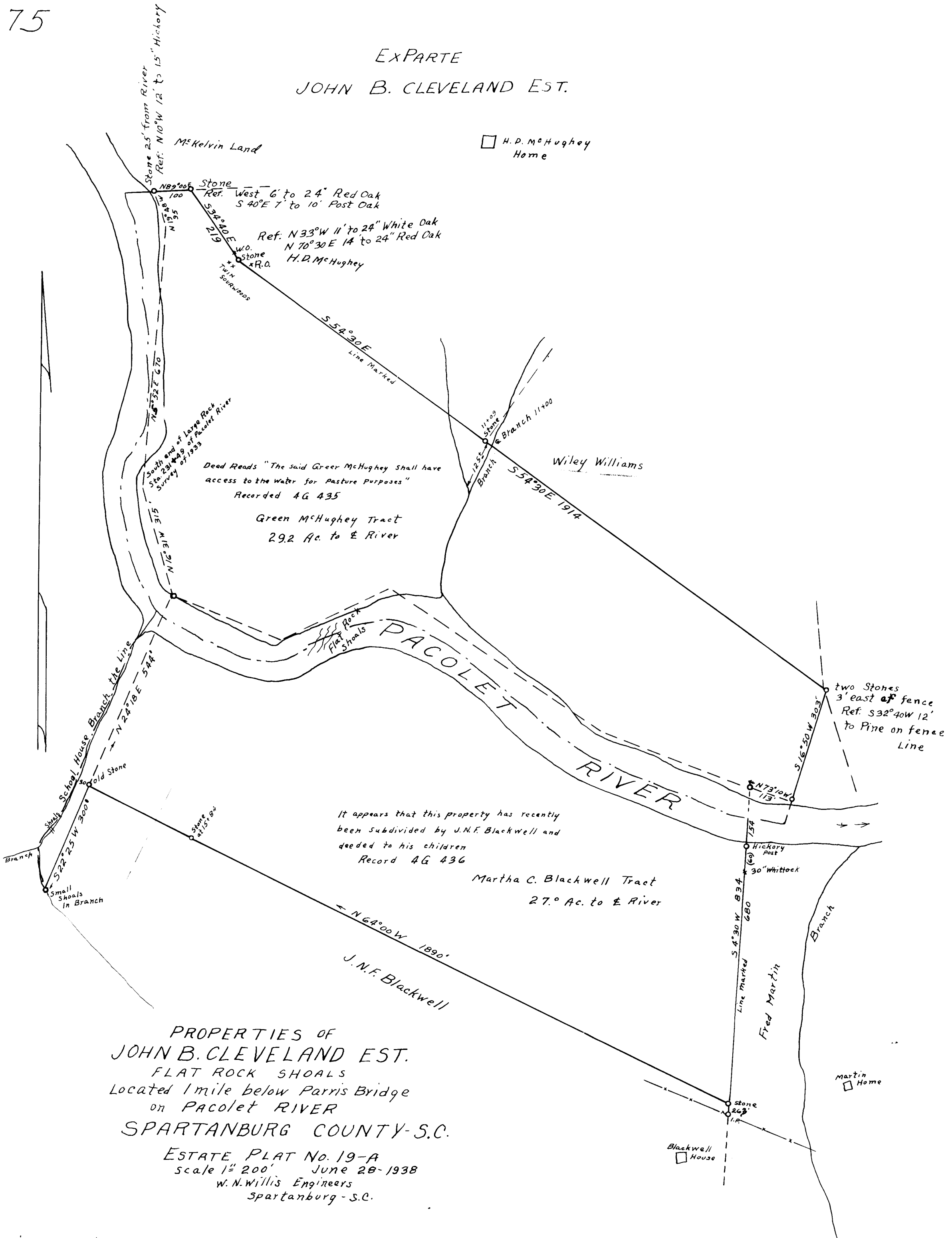


EX PARTE  
JOHN B. CLEVELAND EST.



PROPERTIES OF  
JOHN B. CLEVELAND EST.  
FLAT ROCK SHOALS  
Located 1 mile below Parris Bridge  
on PACOLET RIVER  
SPARTANBURG COUNTY-S.C.

ESTATE PLAT No. 19-A  
Scale 1" = 200' June 28-1938  
W. N. Willis Engineers  
Spartanburg - S.C.

Field - J.S. Taylor

Registered, Certified & Examined Nov. 30<sup>th</sup> 1938 at 4:06 P.M.