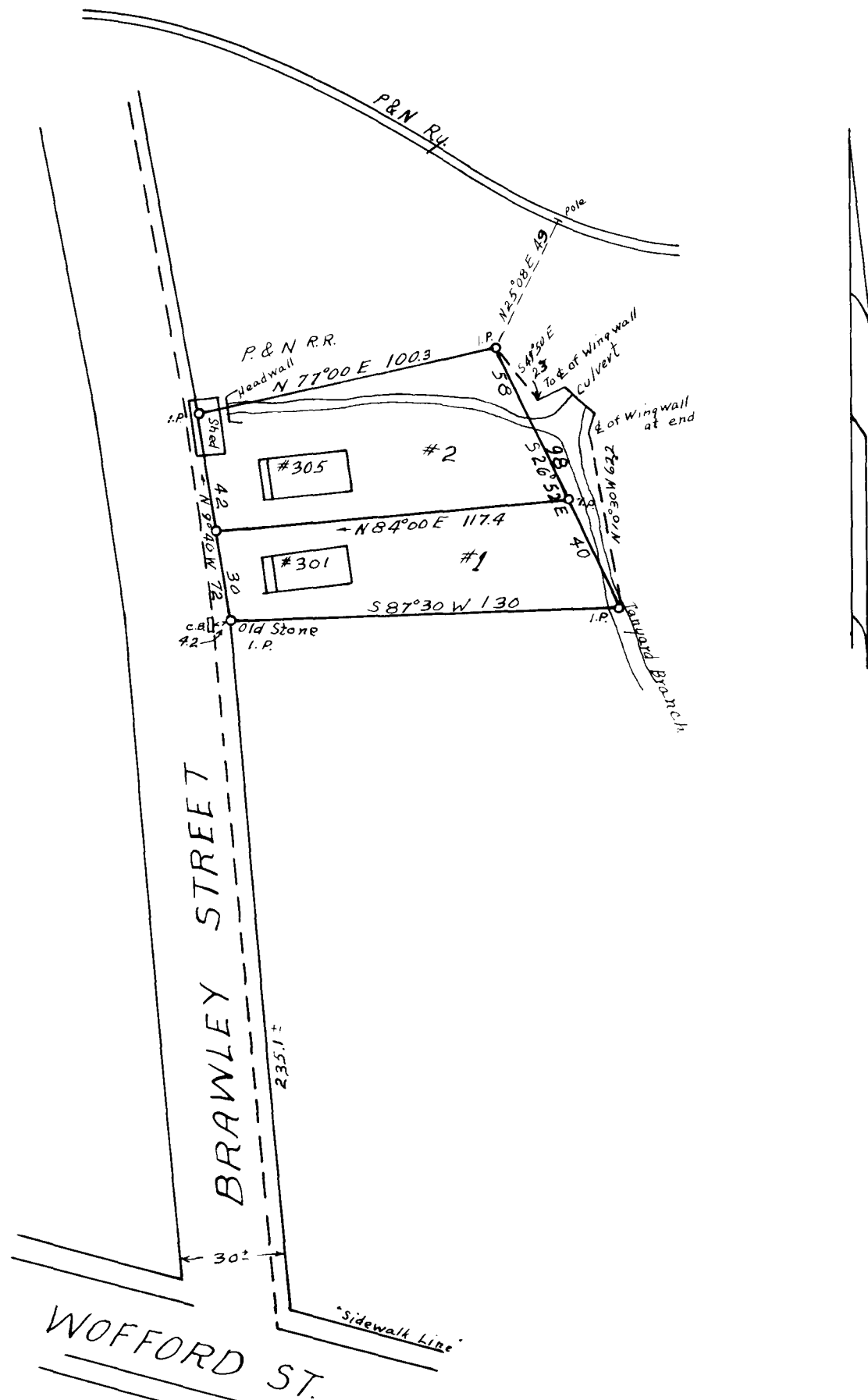


76

EX PARTE
JOHN B. CLEVELAND EST.



PROPERTIES OF
JOHN B. CLEVELAND EST.
LOCATED IN THE CITY OF
SPARTANBURG
SPARTANBURG CO. - S.C.

ESTATE PLAT NO. 20
Scale 1" = 50' June 24, 1938
W.N. Willis Engineers & 7/20/38
Spartanburg, S.C.

Record 4D-637
Field J.S. Taylor

Registered, Certified & Examined Nov. 30th 1938 at 4:06 P.M.