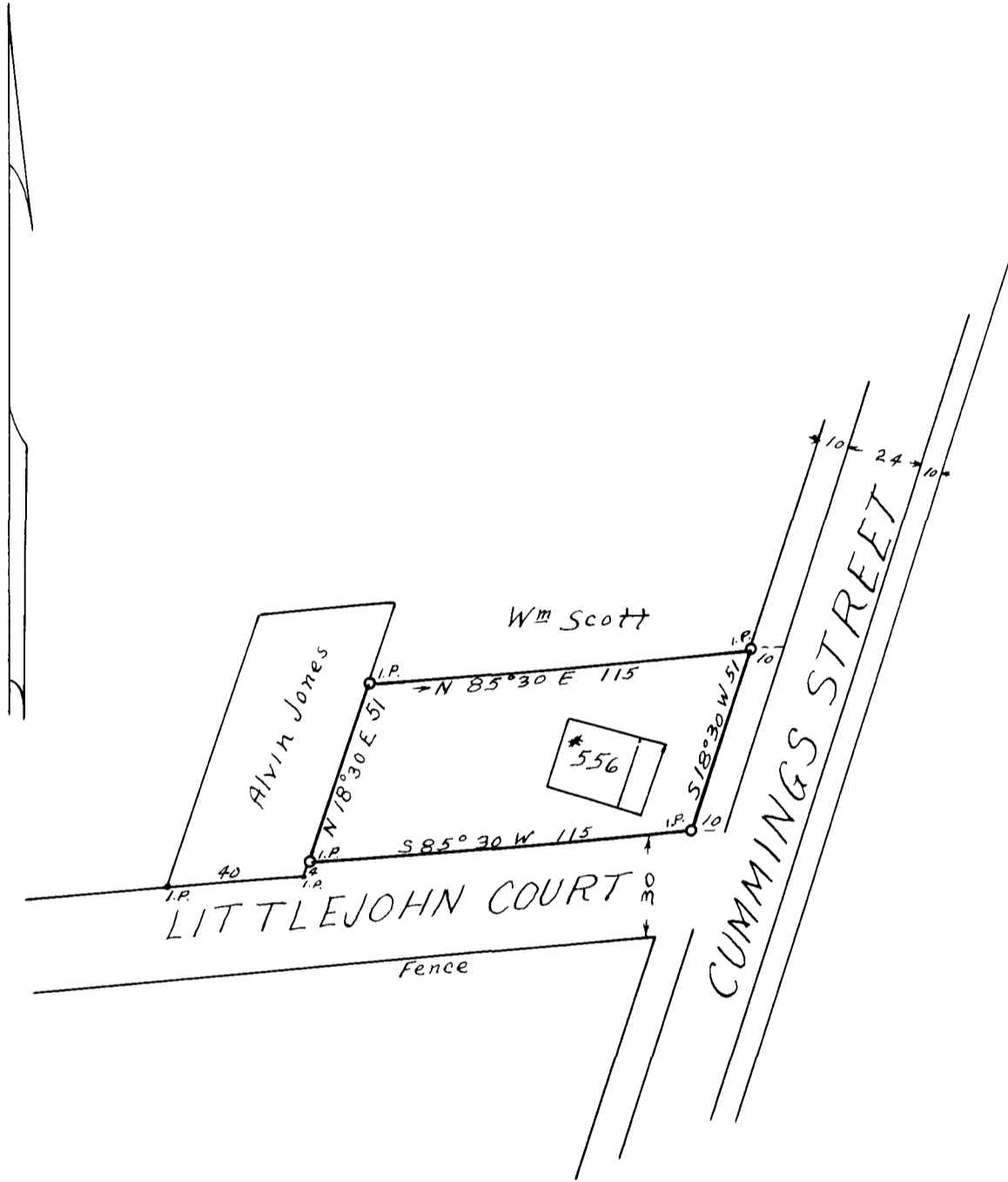


EX PARTE
JOHN B. CLEVELAND EST.



PROPERTIES OF
JOHN B. CLEVELAND EST.
LOCATED IN THE CITY OF
SPARTANBURG
SPARTANBURG CO.-S.C.

Records 7Q-54
3E-309
Sales -7U-63
Field-J.S.Taylor

ESTATE PLAT NO. 21
Scale 1"=50' July 1-1938
W.N. Willis - Engineers
Spartanburg, S.C.

Registered, Certified & Examined Nov. 30th 1938 at 4:06 P.M.