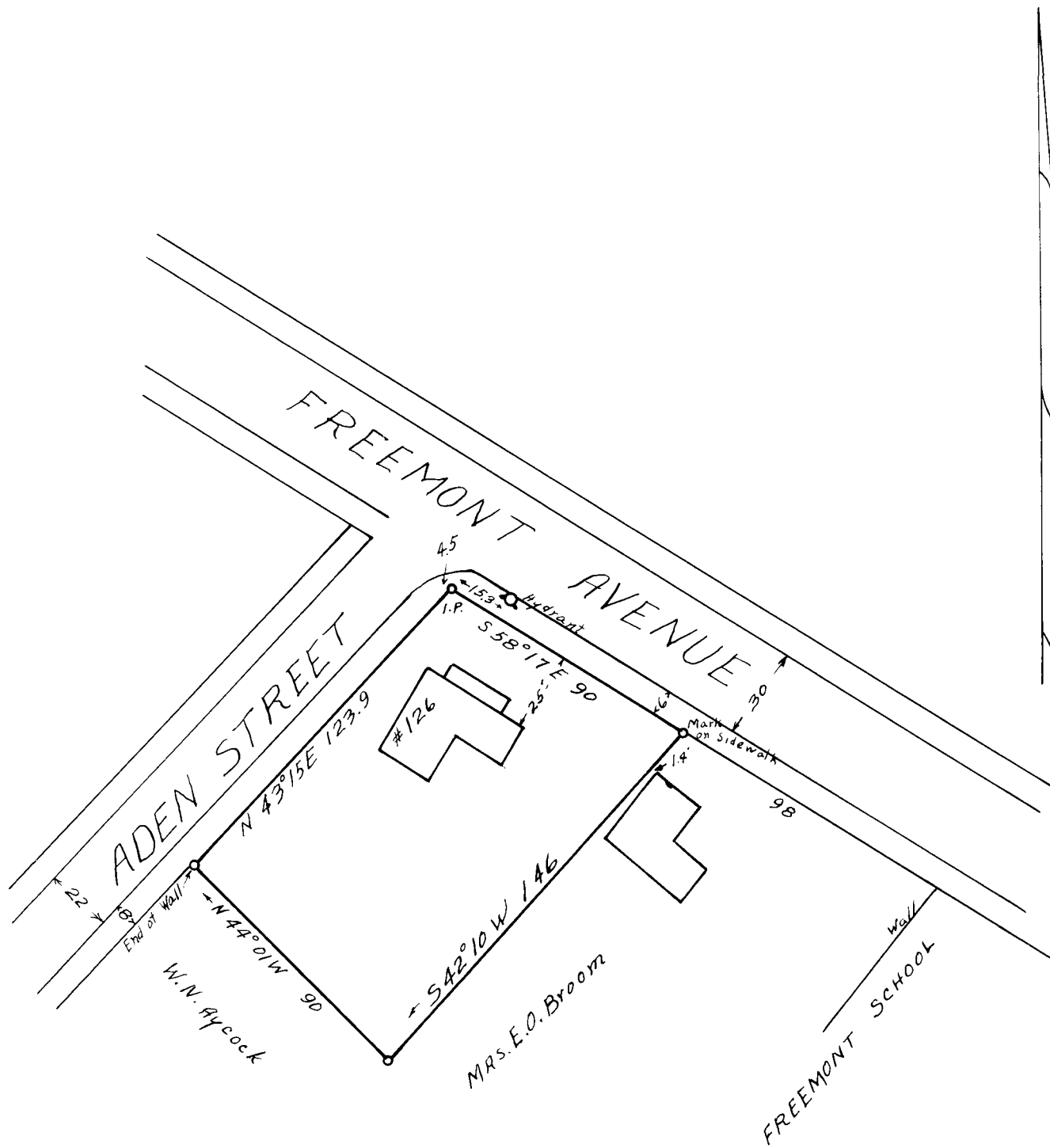


EX PARTE
JOHN B. CLEVELAND EST.



PROPERTIES OF
JOHN B. CLEVELAND EST.
LOCATED IN THE CITY OF
SPARTANBURG
SPARTANBURG CO.-S.C.

ESTATE PLAT NO. 22
Scale 1"=50' JUNE 21, 1938

W.N. Willis - Engineers
Spartanburg, S.C.

Recorded 5A-598
Field - J.S. Taylor

Registered, certified + Examined Nov. 30th 1938 at 4:06 P.M.