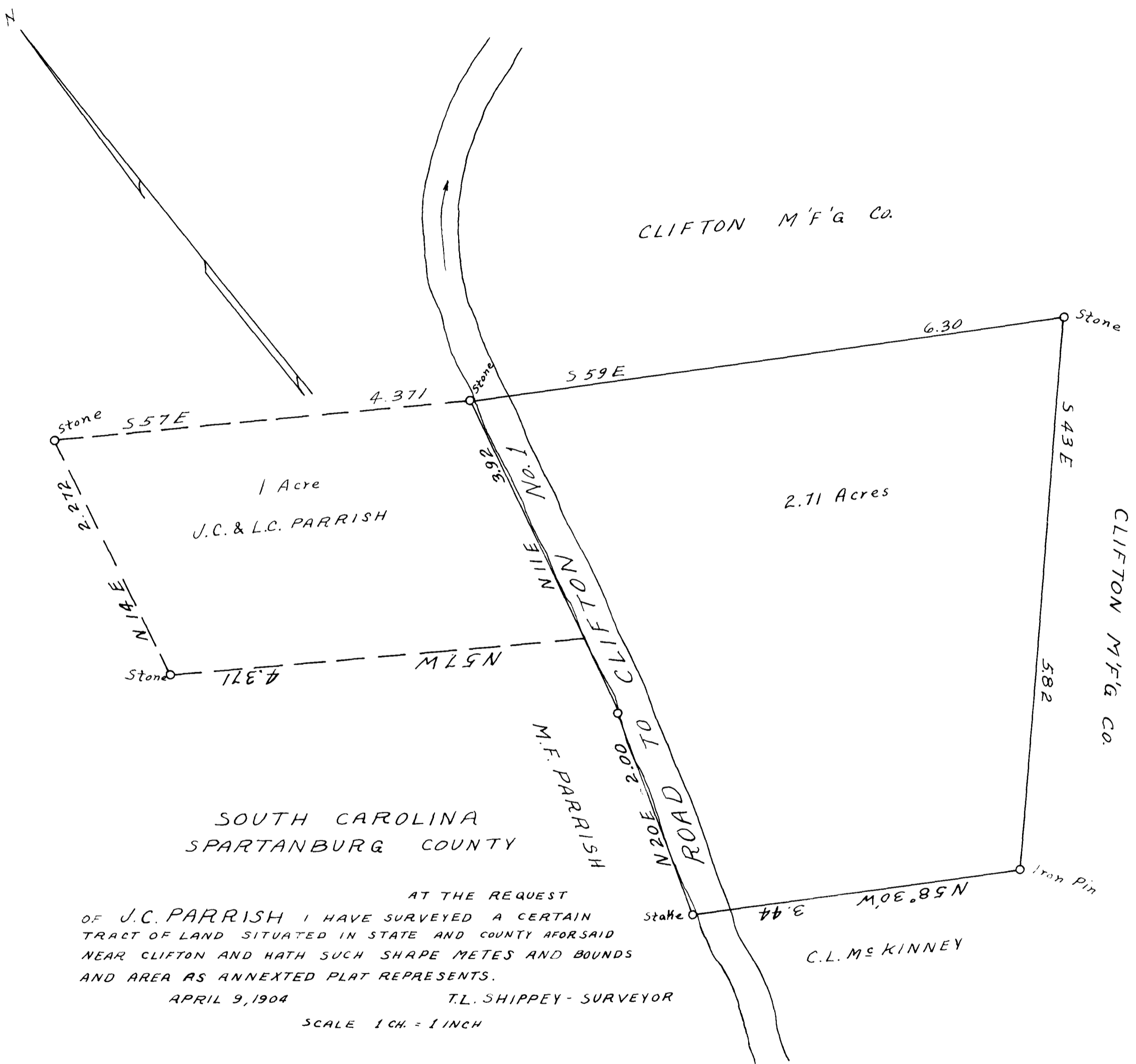


85

EX PARTE
J.C. PARRISH



SOUTH CAROLINA
SPARTANBURG COUNTY

AT THE REQUEST
OF J.C. PARRISH I HAVE SURVEYED A CERTAIN
TRACT OF LAND SITUATED IN STATE AND COUNTY AFORESAID
NEAR CLIFTON AND HATH SUCH SHAPE METES AND BOUNDS
AND AREA AS ANNEXED PLAT REPRESENTS.

APRIL 9, 1904

T.L. SHIPPEY - SURVEYOR

SCALE 1 CH. = 1 INCH

Registered, Certified & Examined Dec. 22nd 1939 at 2:48 P.M.