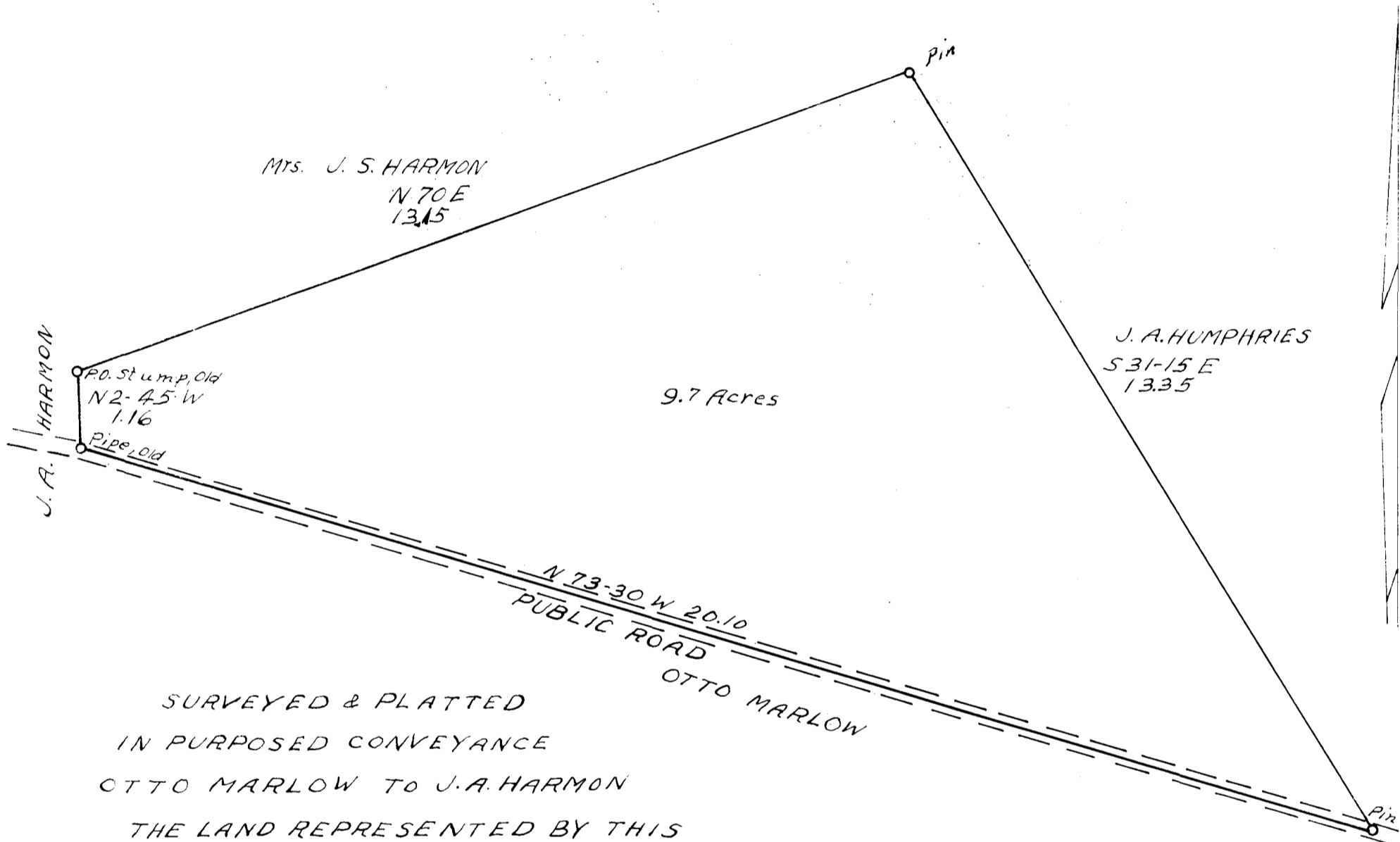


EX PARTE
J. A. HARMON



SURVEYED & PLATTED
 IN PURPOSED CONVEYANCE
 OTTO MARLOW TO J. A. HARMON
 THE LAND REPRESENTED BY THIS
 PLAT IS LYING 2 MILES NORTH OF
 INMAN, SPARTANBURG COUNTY, S. C.
 DEC. 23, 1938

Thos. T. Linder
Reg. Sur.

Registered, certified & Examined Jan. 10, 1939 at 4:06 P.M.