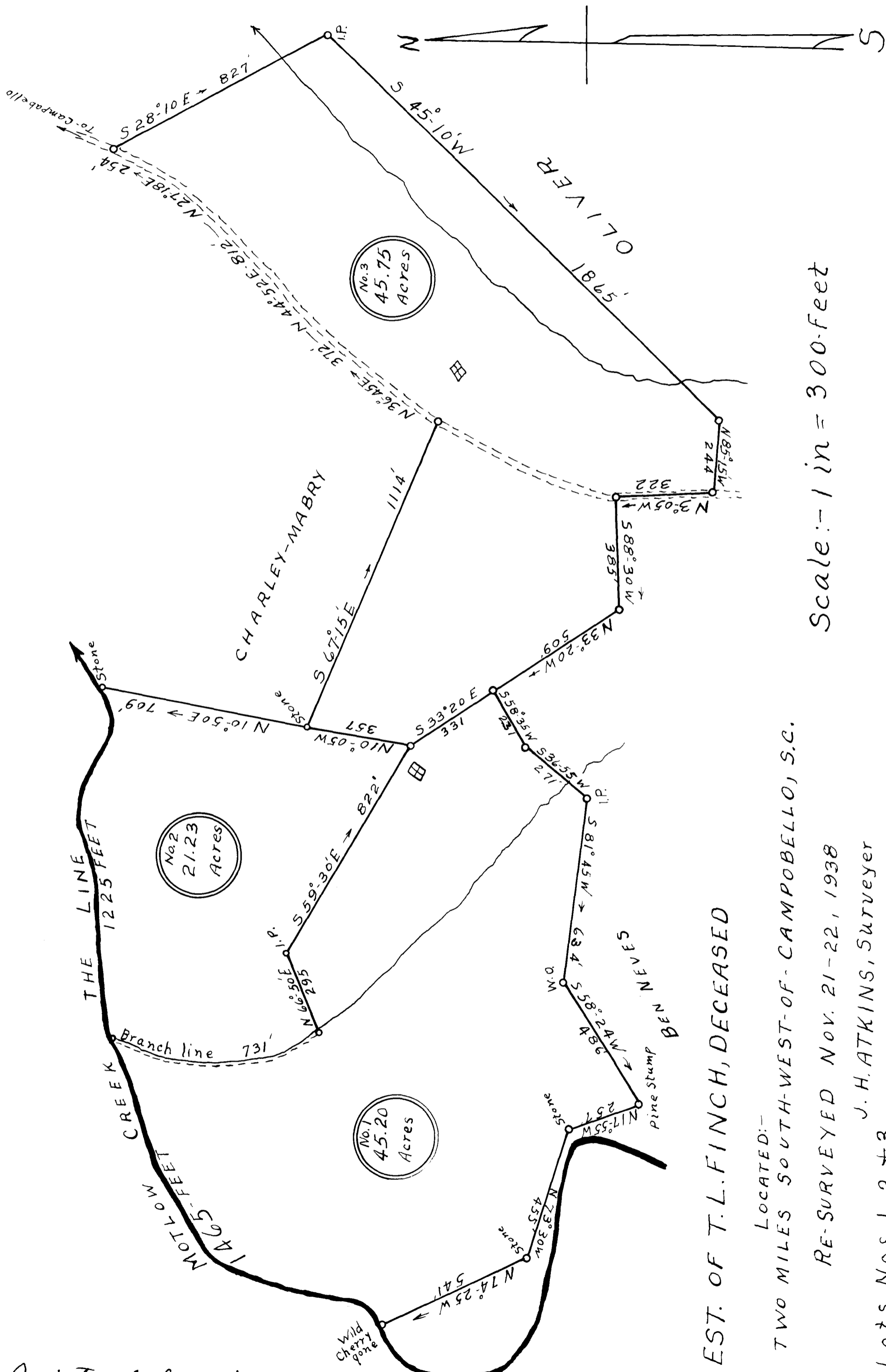


EX PARTE

T.L. FINCH ESTATE



Scale: - 1 in = 300 feet

EST. OF T.L. FINCH, DECEASED

LOCATED: - TWO MILES SOUTH-WEST-OF-CAMPOBELLO, S.C.

RE-SURVEYED NOV. 21-22, 1938

J. H. ATKINS, Surveyor
Lots Nos. 1, 2, & 3

Registered, Certified + Examined Jan. 27th 1939 at 9:42 a.m.