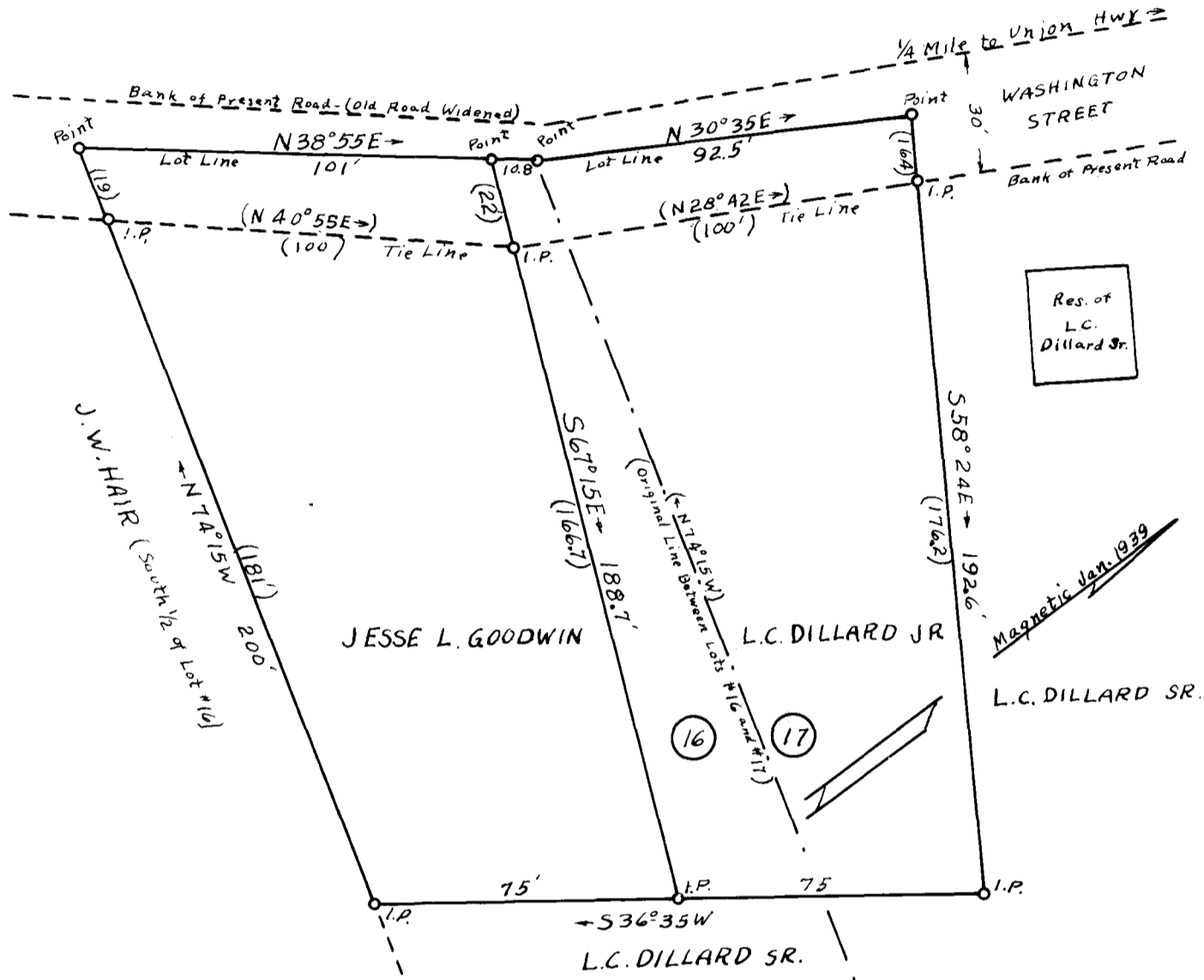


98

EX PARTE  
JESSE L. GOODWIN AND L.C. DILLARD JR.



PROPERTIES OF  
JESSE L. GOODWIN AND L.C. DILLARD JR.

AS DEEDED BY L.C. DILLARD SR.  
LOCATED 1/4 MILE SOUTH OF EAST SPARTANBURG  
SPARTANBURG CO., SOUTH CAROLINA

SCALE: 1" = 40' JAN. 19 1939

W.N. WILLIS, ENGRS.  
SPARTANBURG, S.C.

The Above Lots Being Portions of Lots #16 And #17 of The Berry Hendley  
Subdivision by Ladshaw & Ladshaw Dated Sept. 22, - Oct. 14, 1919 AND Recorded  
In Platbook 7, Page 158.

Registered, Certified & Examined Feby. 1<sup>st</sup> 1939 at 12:16 P.M.