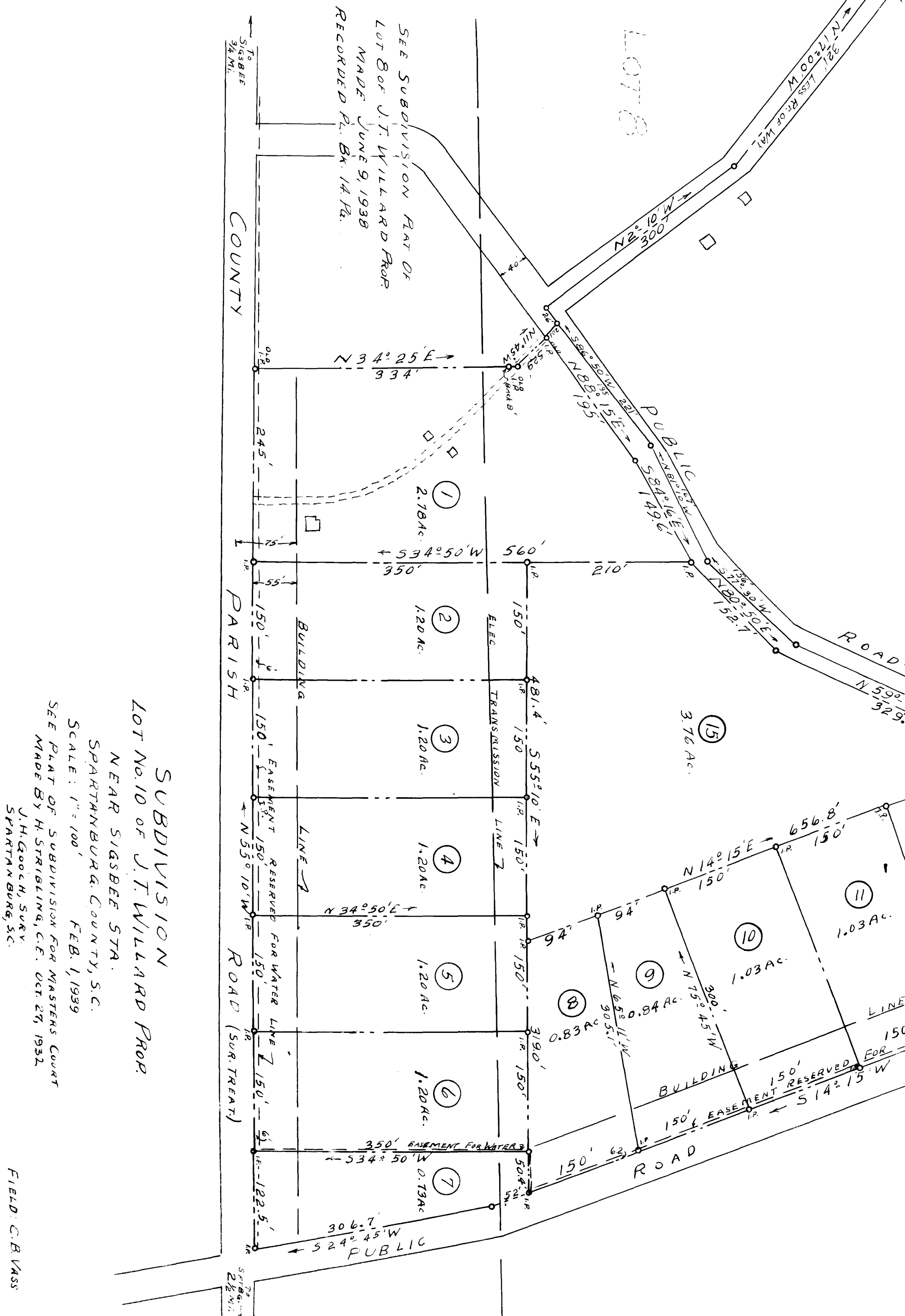


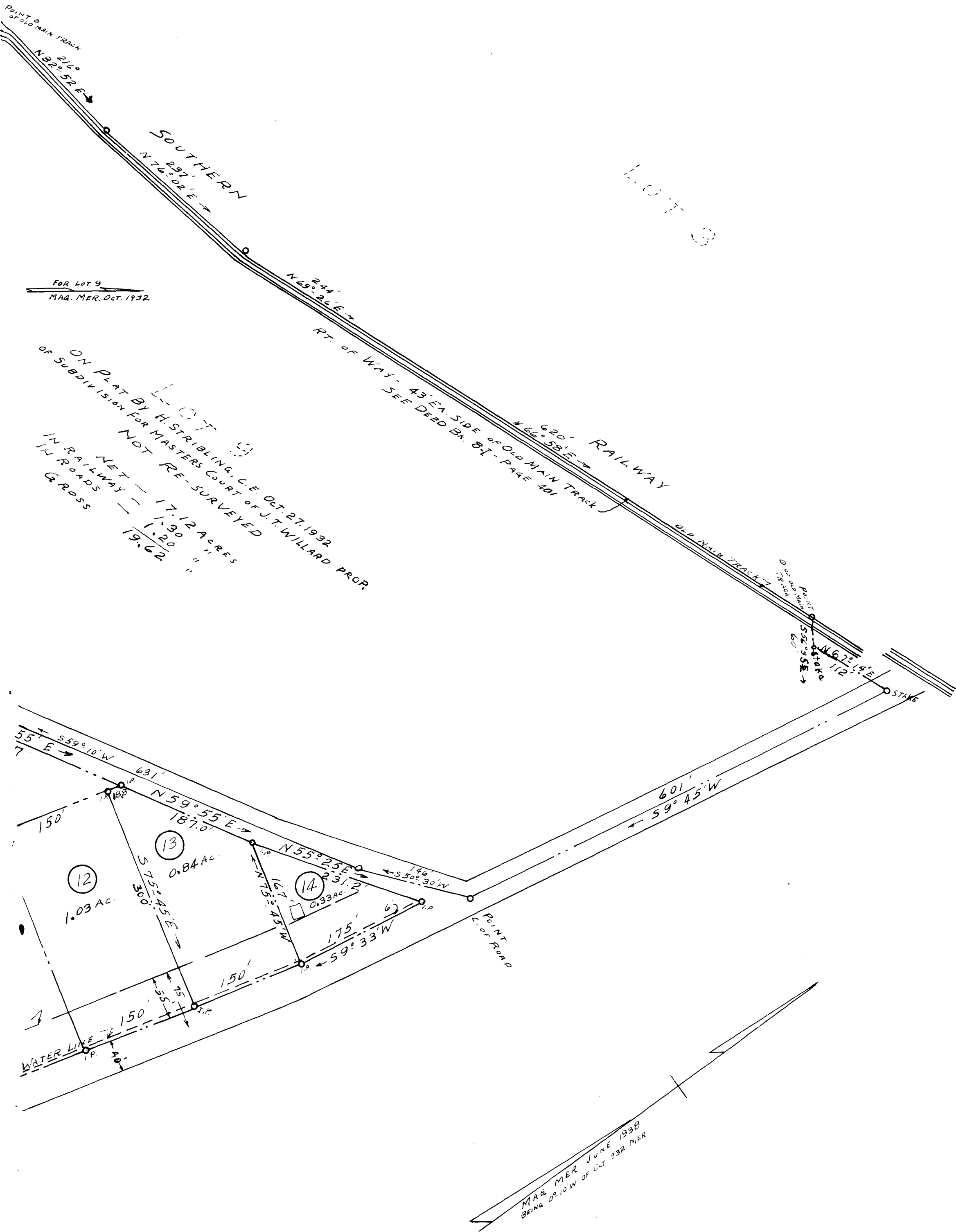
99

EX PARTE  
J. T. WILLARD



SUBDIVISION  
LOT NO. 10 OF J.T. WILLARD PROP.  
NEAR SIGSBEE STA.  
SPARTANBURG COUNTY, S.C.  
SCALE: 1" = 100' FEB. 1, 1939  
SEE PLAT OF SUBDIVISION FOR MASTERS COURT  
MADE BY H. STRIBLING, C.E. OCT. 27, 1932  
J.H. GOOCH, SURV.  
SPARTANBURG, S.C.

FIELD: C.B. VASS



Registered, Certified & Examined Feb. 10<sup>th</sup> 1939 at 10:46 a.m.