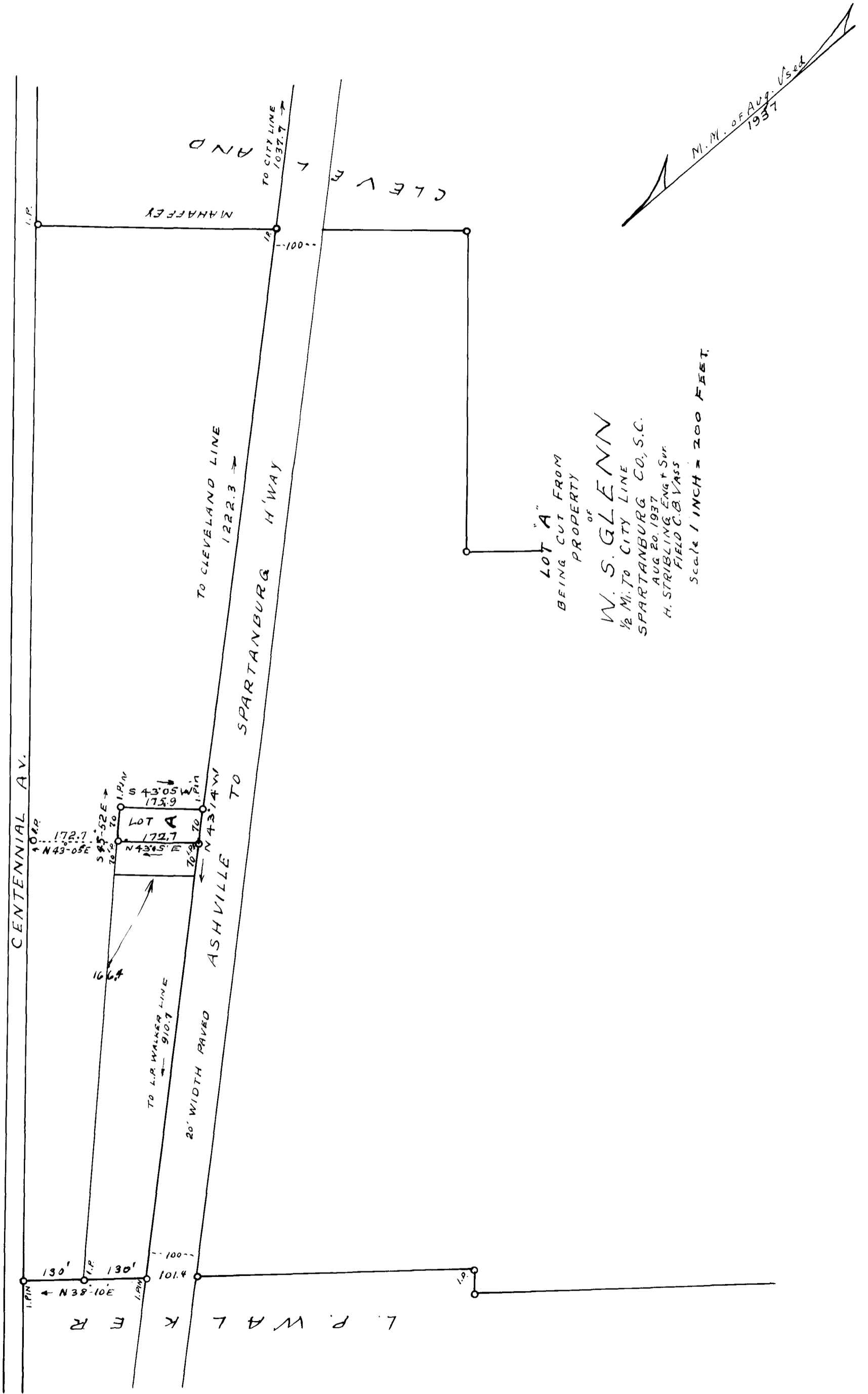


EX PARTE
W. S. GLENN



LOT "A"
BEING CUT FROM
PROPERTY
OF
W. S. GLENN
1/2 MI. TO CITY LINE
SPARTANBURG CO., S.C.
AUG 20, 1937
H. STRIBLING, ENG'G & SURV.
FIELD C.B. VASS
Scale 1 INCH = 200 FEET.

Registered, Certified + Examined July, 11th 1939 at 11:05 A. M.