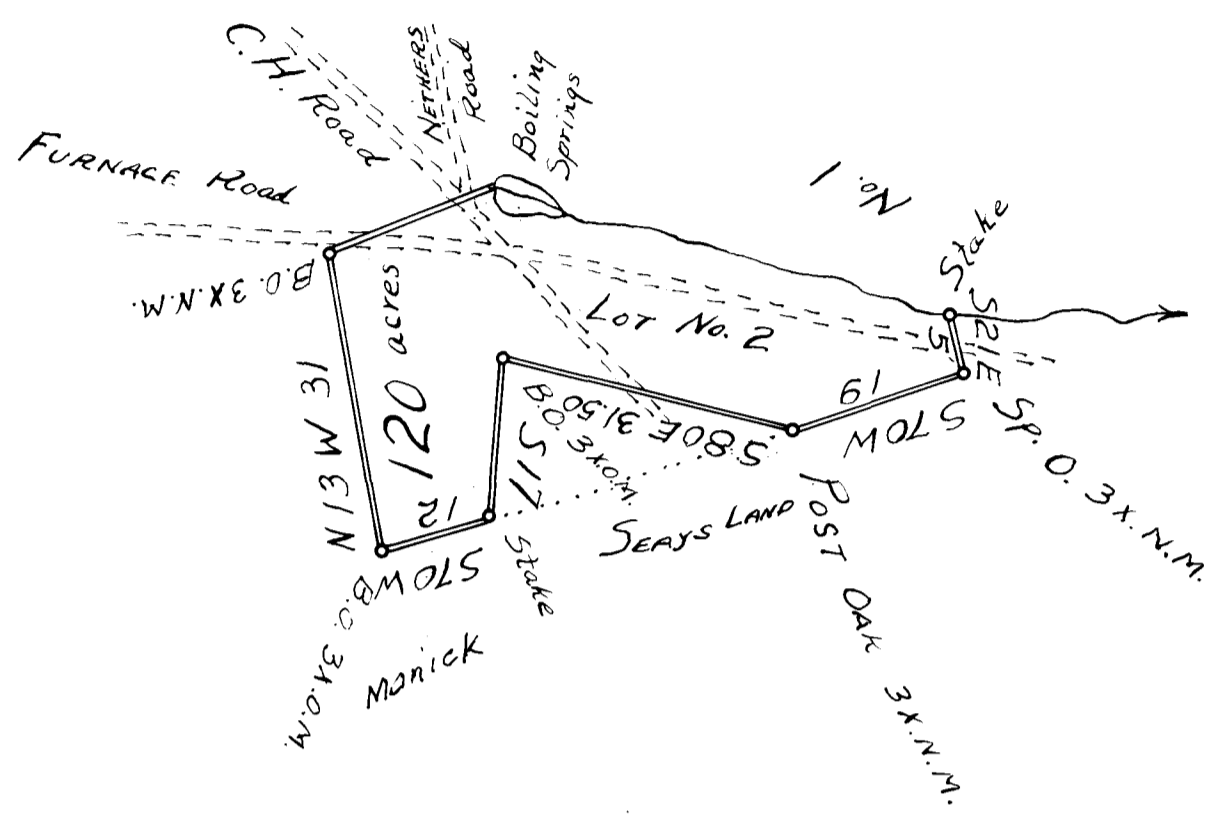


112

EX PARTE
WILLIAM and VINCENT BENNETT



SOUTH CAROLINA

The above plat represents 120 acree of land. It being part of the real estate William and Vincent Bennett decd. called the Boiling Spring Tract. It is bounded as above represented. 12TH. of August 1837.

D. WHITE, D.S.

Registered, certified & Examined March 17-1939 at 1:16 P.M.