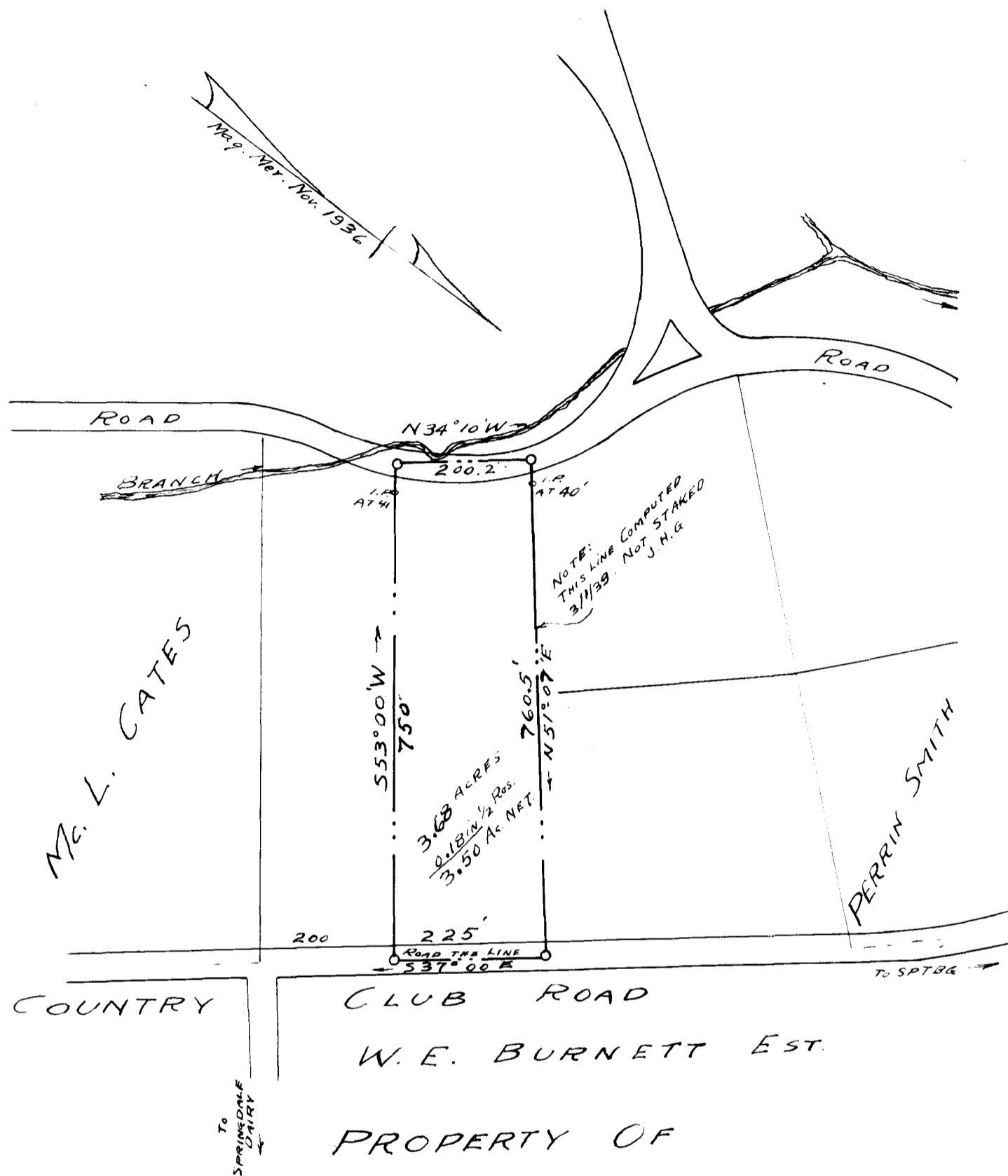


125

EX PARTE
DR. J. R. SPARKMAN



PROPERTY OF
 DR. J. R. SPARKMAN
 AS PURCHASED FROM
 ISAAC ANDREWS
 NEAR THE CITY OF SPARTANBURG, S.C.
 SCALE: 1" = 200' REVISED MAR. 1, 1939

RETRACED FROM A PLAT MADE BY H. STRIBLING, C. E.
 AUGUST 1937 IN POSSESSION OF DR. SPARKMAN

I hereby certify that the above plat is a true representation of a plat
 made August 1937 by H. Stribling, C. E. as evidenced by blue print of same
 in possession of Dr. Sparkman

Signed J. H. Gooch
 J. H. Gooch, Surv.
 Spartanburg, S. C.

Registered, certified & Examined April 28, 1939 at 11:54 a. m.