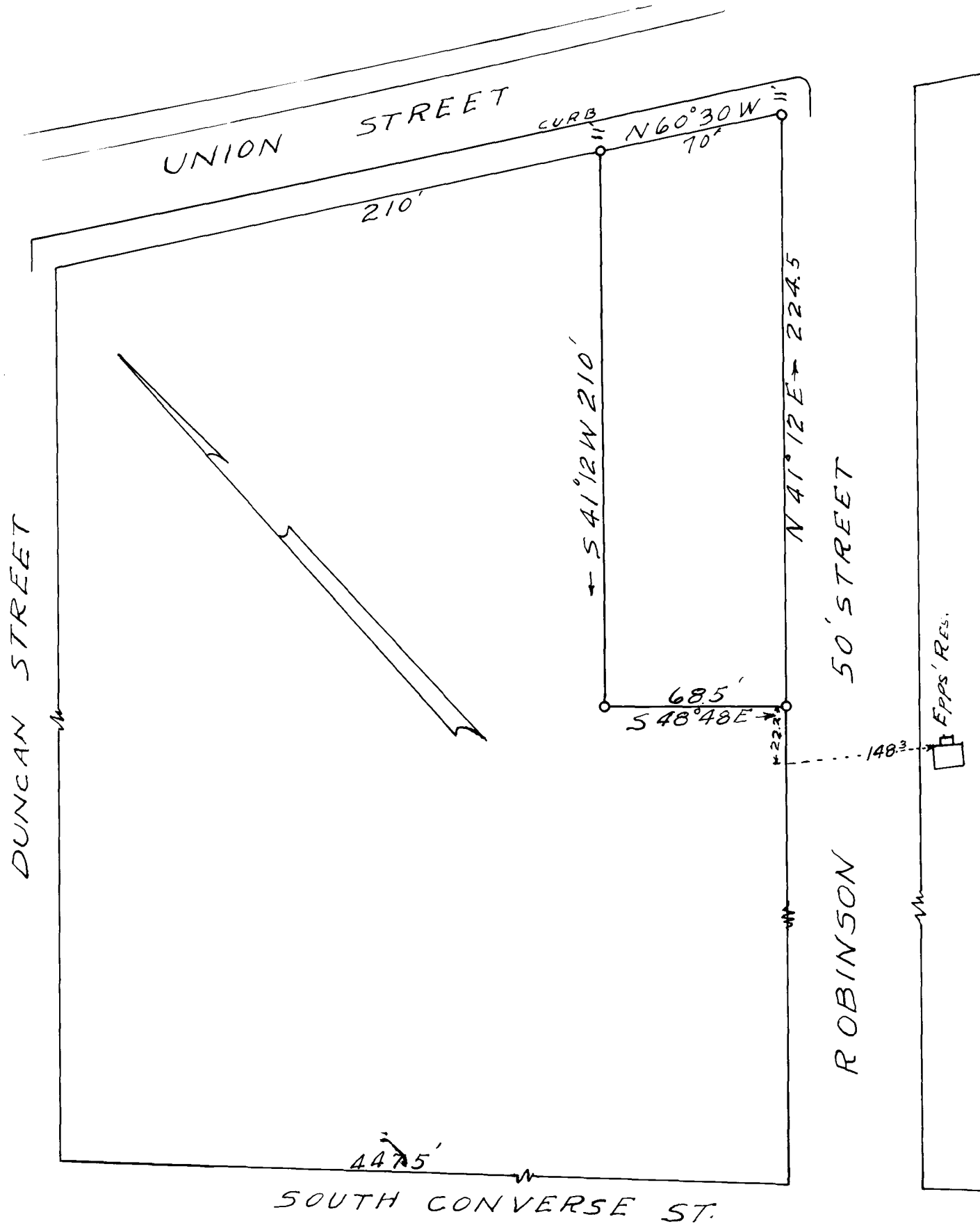


EX PARTE
D.D. WALLACE



PROPERTY OF
 D.D. WALLACE
 IN THE CITY OF
 SPARTANBURG, S.C.
 SCALE: 1"=50' MARCH 21, 1927
 W.N. WILLIS ENGINEERS
 SPARTANBURG, S.C.

Registered, Certified & Examined May 5th 1939 at 4:48 P.M.