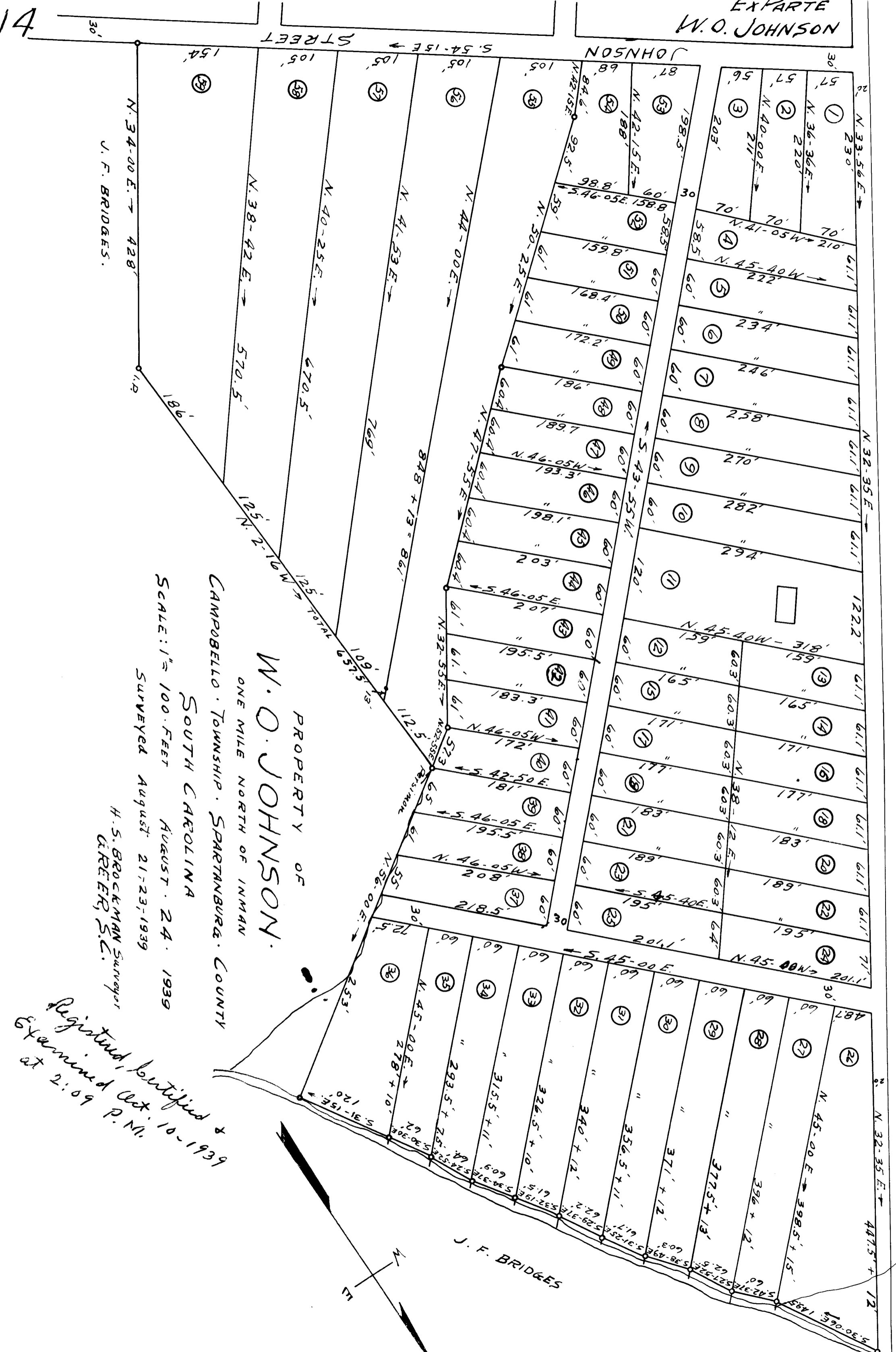


EX PARTE
W. O. JOHNSON



LOUIS WATERS

PROPERTY OF
W. O. JOHNSON.

ONE MILE NORTH OF INMAN
CAMPBELL TOWNSHIP · SPARTANBURG COUNTY
SOUTH CAROLINA

SCALE: 1" = 100 FEET
AUGUST · 24 · 1939
SURVEYED August 21-23, 1939

H. S. BROCKMAN Surveyor
J. F. BRIDGES

Registered, Certified &
Examined Oct. 10, 1939
at 2:09 P.M.

14