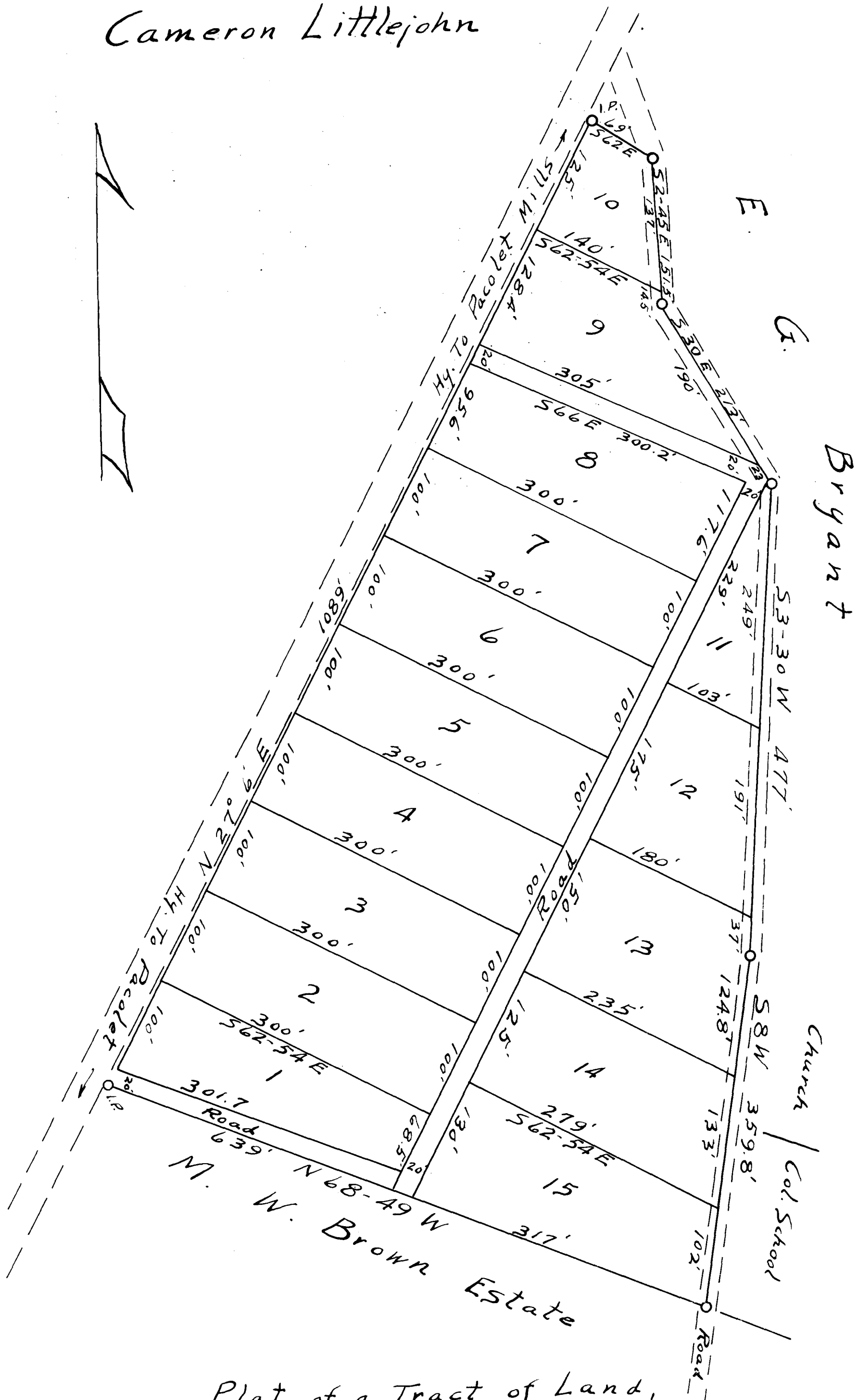


EX PARTE
Cameron Littlejohn



Plat of a Tract of Land,
Containing Ten and 8/100 Acres, Situated
near Pacolet, S.C. Surveyed and Subdivided
for Cameron Littlejohn, Jan. 20 and 31, 1939.

J.W. Cunningham
Surveyor

Scale 100' To 1"

Registered, Certified & Examined Oct. 24-1939 at 10:45 a.m.