

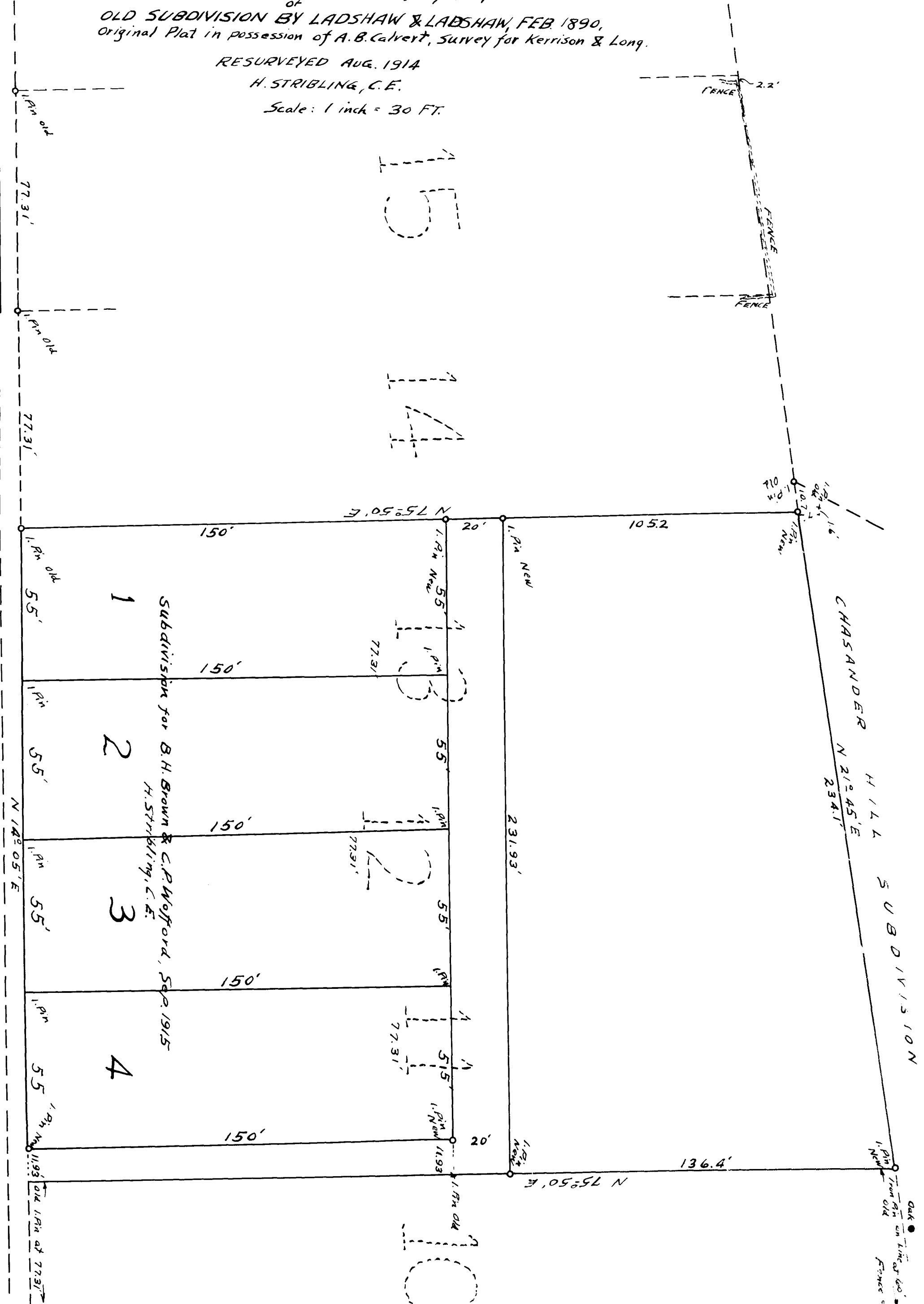
EX PARTE

B. H. BROWN & C. P. WOFFORD

RE-SURVEY OF
AREA CONTAINED IN LOTS 11, 12, & 13,
OF
OLD SUBDIVISION BY LADSHAW & LADSHAW, FEB. 1890,
Original Plat in possession of A. B. Calvert, Survey for Kerrison & Long.

RESURVEYED AUG. 1914
H. STRIBLING, C. E.

Scale: 1 inch = 30 FT.



Registered, certified & Examined Oct. 31st 1939 at 10:37 a. m.