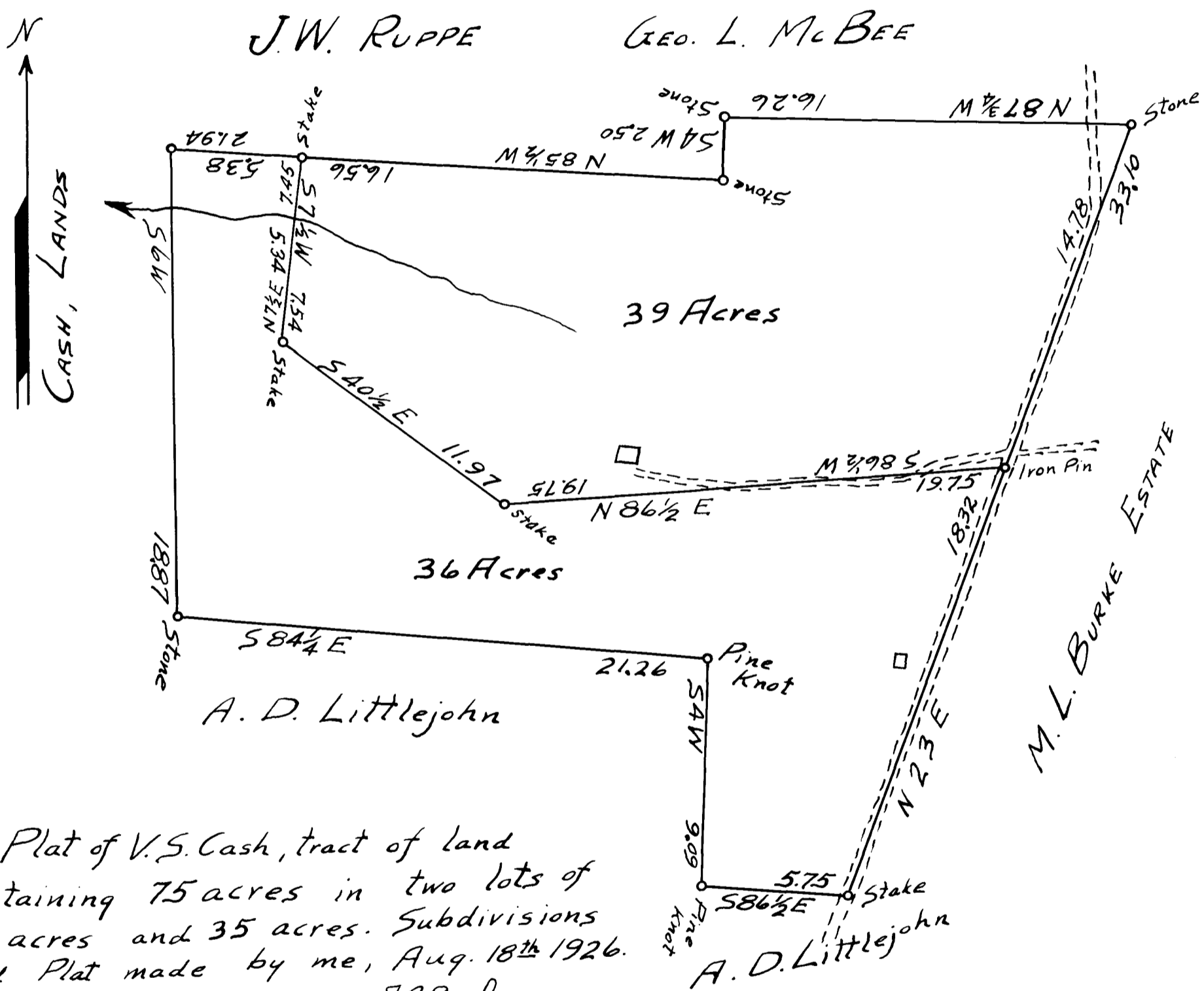


22

EX PARTE V. S. CASH



Plat of V.S. Cash, tract of land containing 75 acres in two lots of 40 acres and 35 acres. Subdivisions and Plat made by me, Aug. 18th 1926.

J.S. Cash L.S.

SCALE: one inch = 5 chains

Registered, certified & Examined Nov. 7th 1939 at 1:48 P.M.