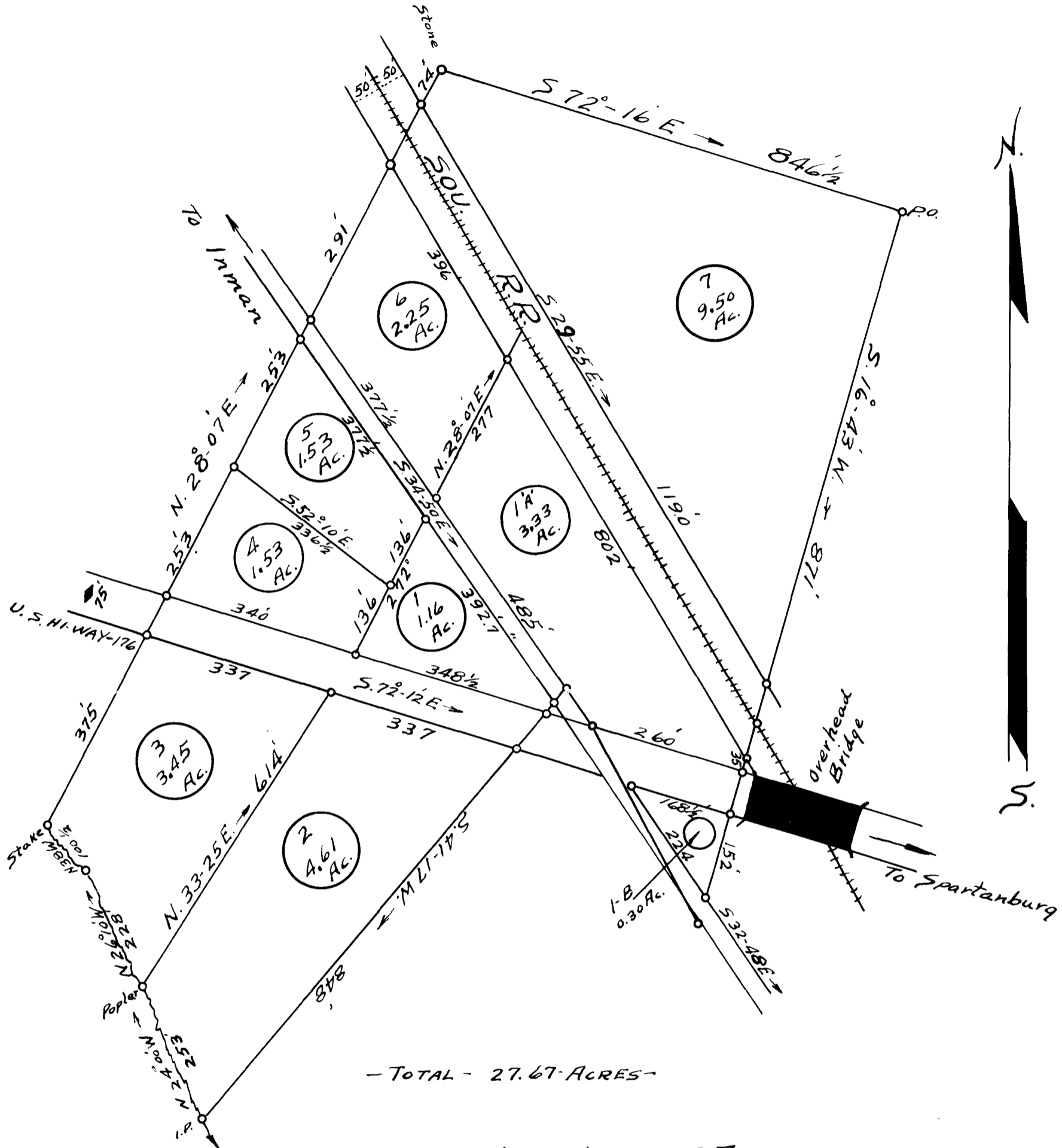


23

EX PARTE G.N. BROOM DEC'D

Scale: - 1-in = 200 Feet



- TOTAL - 27.67 ACRES -

ESTATE - LANDS - OF G.N. BROOM - DEC'D

SUB-DIVIDED
LOCATED

[NEAR INMAN & CAMPTON]
SPARTANBURG COUNTY, S.C.

Inter-state Land Auction Company, Selling Agents
Spartanburg, S.C.

J. H. Atkins, Surveyor, Oct. 10, 1939

Registered, Certified & Examined Nov. 9th 1939 at 10:56 A.M.