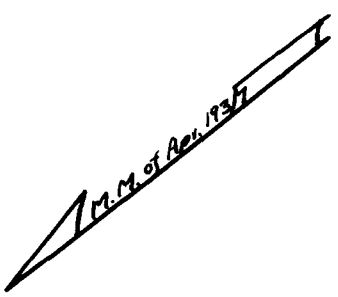
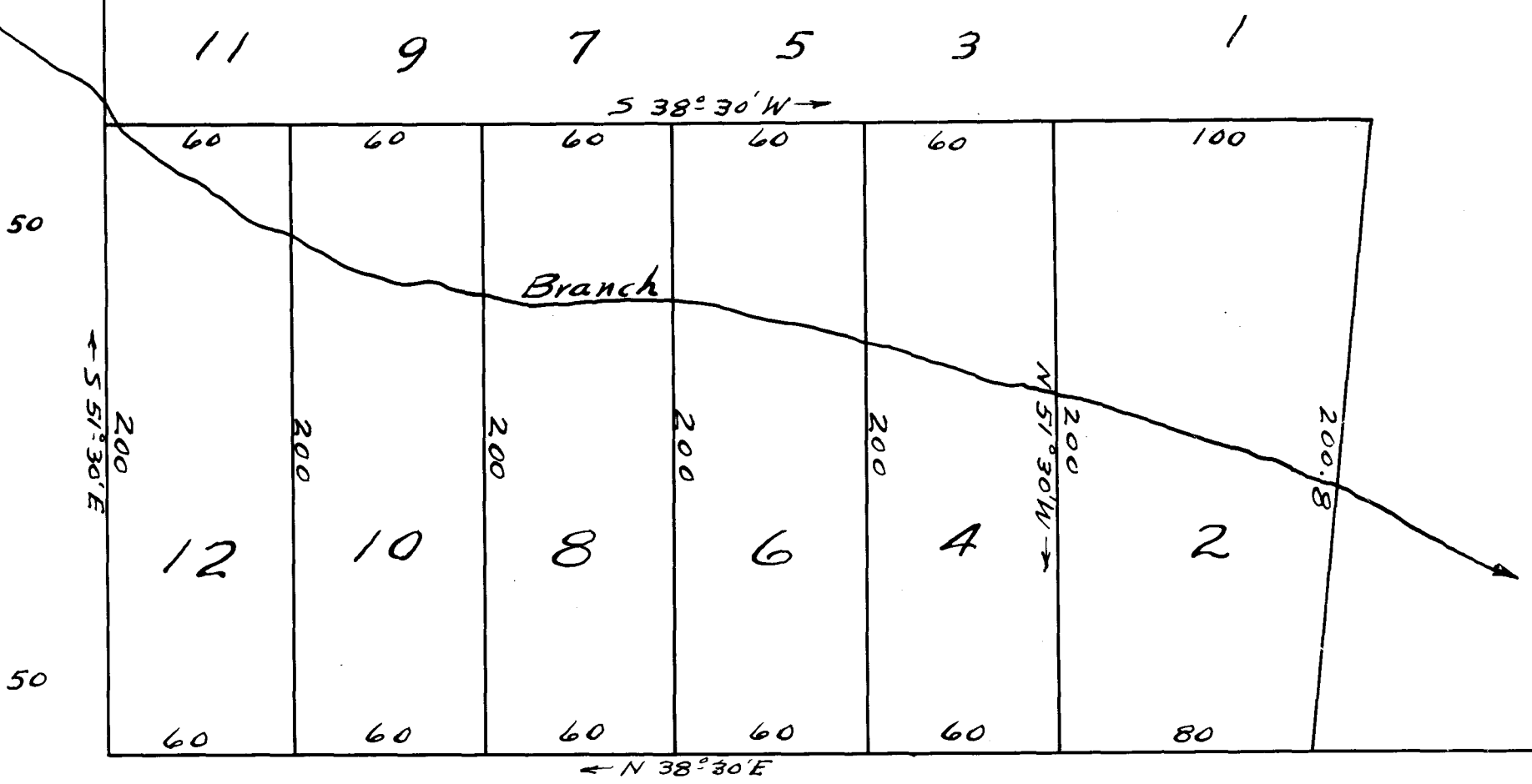


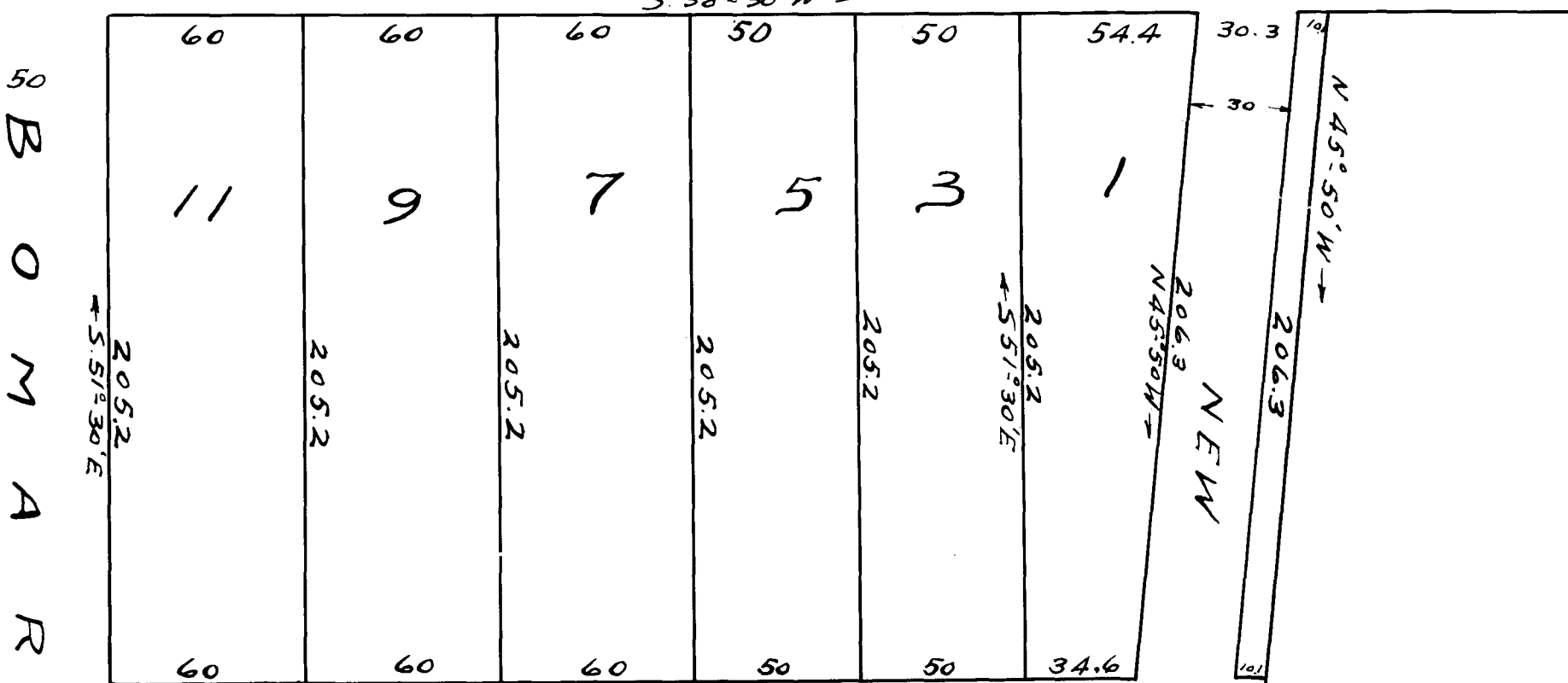
EX PARTE

26.

T.W. WOODWORTH



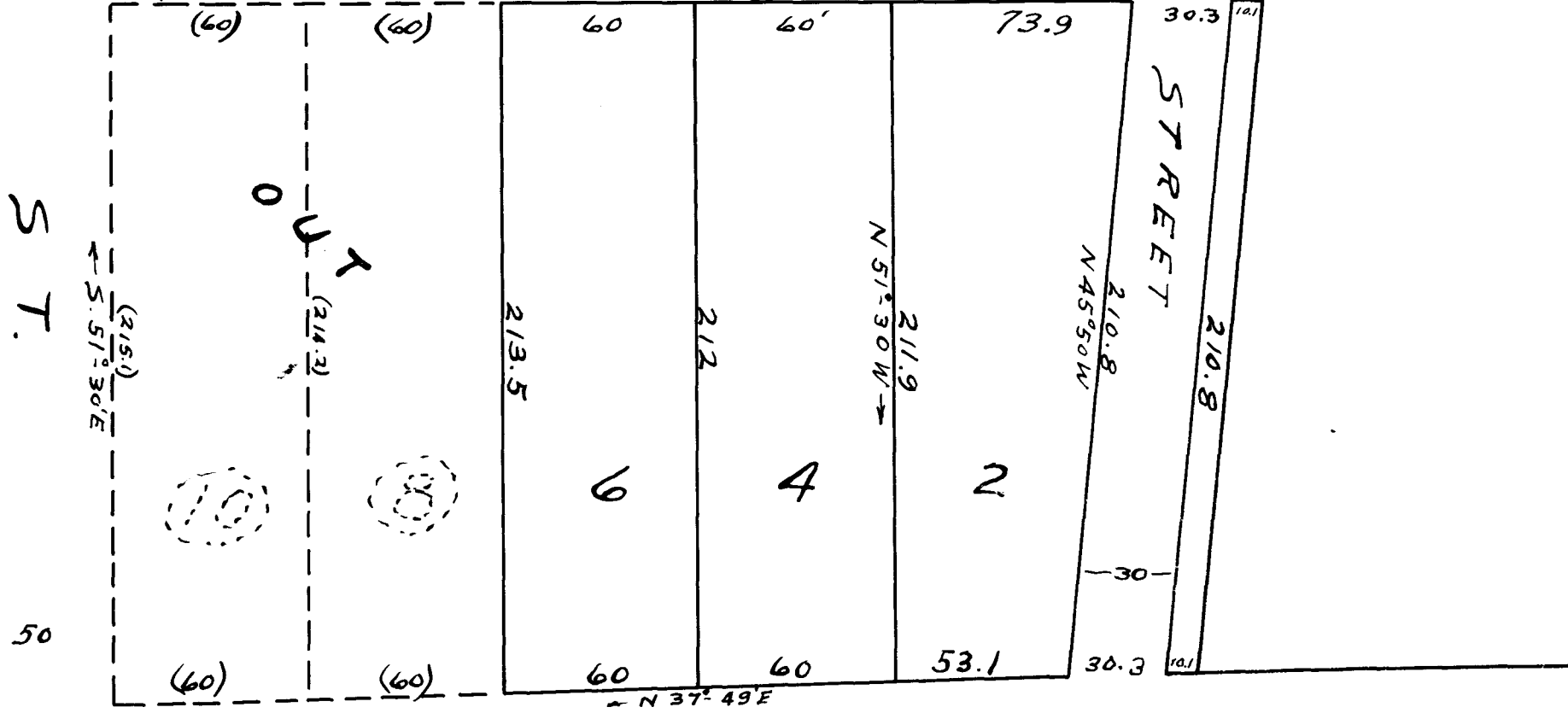
M A R I O N AV.



B O M A R S T.

← 390 To S. CONVERSE

PROPERTY OF
T. W. WOODWORTH
 CITY OF SPARTANBURG, S.C.
 BEING LOTS 1-2, 6, 1-11, 2-12, ALEXANDER PLANT
 RECORDED IN DEED BOOK 3-V. pages 24-26 &
 RESURVEYED SEP 30, 1937
 H. STRIBLING, ENG. & SUR.
 FIELD: G. B. VASS



A L E X A N D E R AV.

S T.

SCALE 1 INCH = 50 FEET