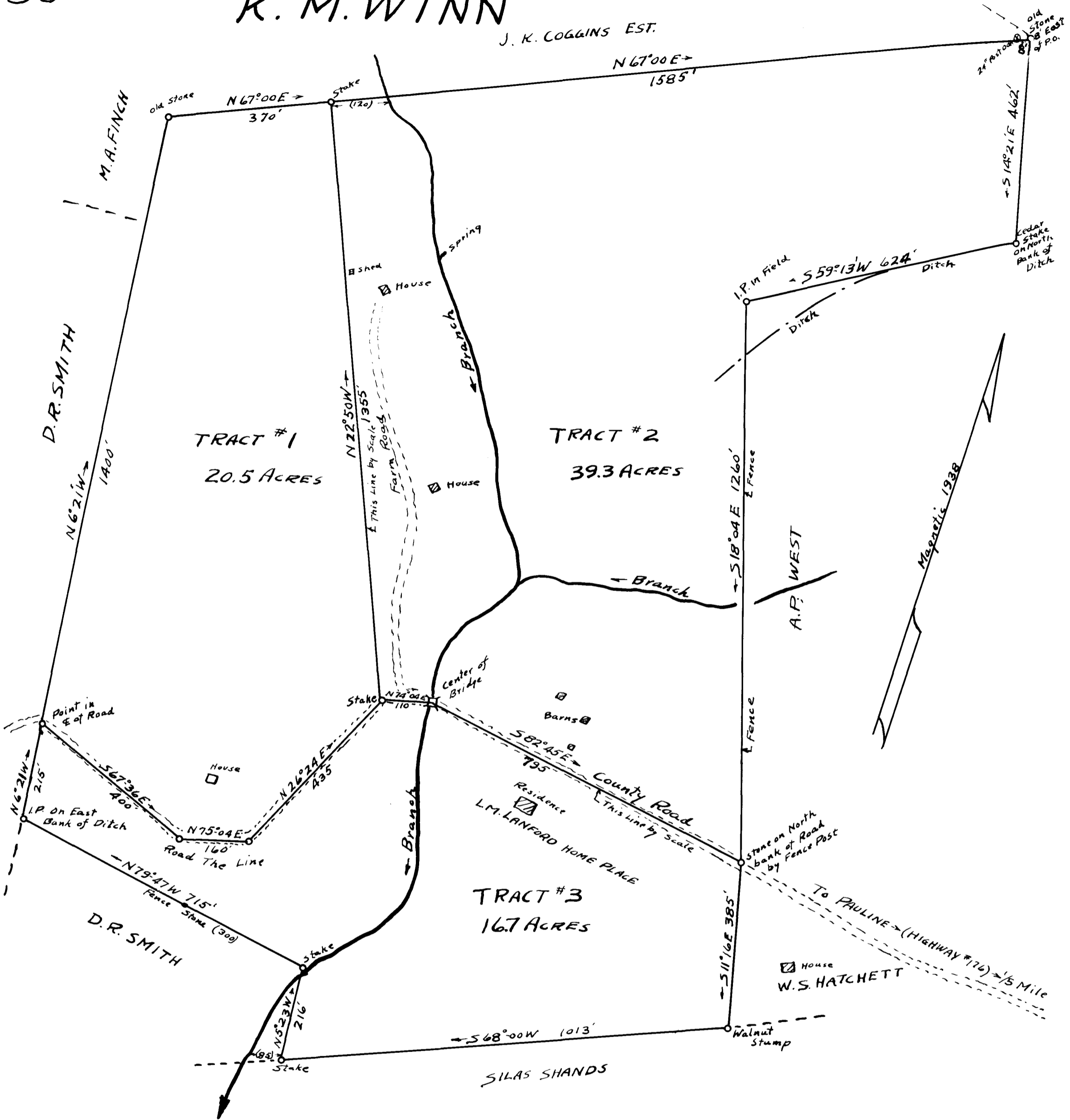


30

# EX PARTE K. M. WINN

J. K. COGGINS EST.



PROPERTY OF  
**L. M. LANFORD EST.**  
 LOCATED 1/5 MILE WEST OF PAULINE  
 Purchased by K. M. WINN  
 SPARTANBURG CO., SOUTH CAROLINA

SCALE: 1" = 200'

DEC. 15, 1938

W. N. WILLIS ENGINEERS  
SPARTANBURG, S.C.

Revised Dec 22, 1938 W. N. Willis Engrs.

Stadia: Field: J. S. Taylor

Registered, Certified & Examined Nov. 18, 1939 at 12:25 P.M.